

The background of the image is a collage of industrial machinery, primarily stainless steel pipes, valves, and gauges. The machinery is arranged in a way that creates a sense of depth and complexity. Overlaid on this background are several large, dark blue geometric shapes, including triangles and diamonds, which intersect to form a grid-like pattern. The overall color scheme is dominated by blue and silver, giving it a professional and technical appearance.

Haleson

- 
- 3 Sanitary Pumps
 - 4 Sanitary Pumps
 - 5 Unloading Systems
 - 6 Sanitary Valves
 - 7 Sanitary Valves
 - 8 Sanitary Valves
 - 9 Hoses
 - 10 Mixers & Agitators
 - 11 Sanitary Fittings
 - 12 Clamps & Gaskets
 - 12 Tubes & Hangers
 - 13 Tank, Tote & Drum Cleaning
 - 14 Filters & Strainers
 - 15 Manhole Covers
 - 16 Heat Exchangers
 - 17 Instruments
 - 18 Utilities
 - 19 Utilities

Sanitary Pumps



State-of-the-art sanitary pumps, designed for optimal cleanliness and efficiency.

Ensure seamless **fluid transfer** in **food, beverage** and **pharmaceutical** industries with our range of **FDA & BPE compliant** pumps.

Experience **reliable performance** and **easy maintenance**.



Centrifugal
Pumps & Carts



Self-Priming Pumps
CIP Return



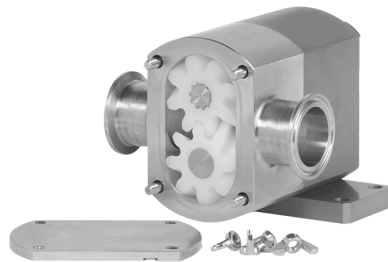
RVN Helicoidal
Impeller Pumps



Explosion Proof
Portable Pumps
Assembly



Lobe Pumps



Gear Pumps



Circumferential
Piston Pumps



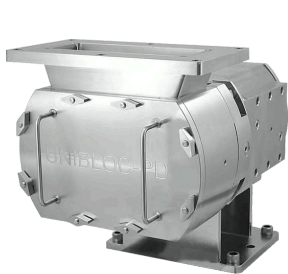
Twin Screw
Pumps

Sanitary Pumps



Maximize productivity while adhering to strict regulatory standards with our customizable sanitary pump solutions.

Trust in our proven track record of delivering cutting-edge technology and unparalleled support for your sanitary pumping requirements, ensuring uninterrupted operation and peace of mind.



Meat & Poultry
Lobe Pumps



Jacketed Pumps
(for honey, chocolate...)



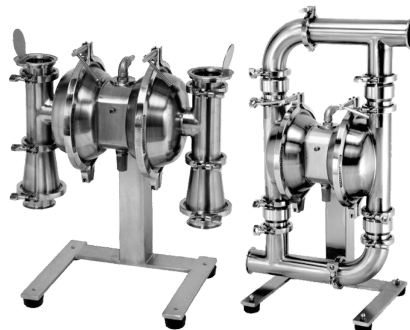
Tanker Truck
Lobe Pumps



Progressive Cavity
Pumps



Full Hygienic
Diaphragm Pumps
(Polished Internals)



Large Particles Pumped
(Meat, Whole Eggs,
Fruits...)



Diaphragm Pumps
with **Hoppers**



Diaphragm Pump
Carts with
Pulsation Dampeners

Unloading Systems



Unloading systems are an excellent alternative on the market for **pumping high viscosity** products (tomato paste, almond paste, peanut butter) or shear-sensitive materials (whole eggs, fruits, chicken breasts).

Unloading systems are designed to discharge **all types of containers** (drums, totes, kettles) due to their **self-priming** feature and the ability to **run dry without damage**.



Tote Unloading Pumps



Drum & Barrel Pumps



**Plastic Diaphragm
CIP & Chemical Pumps**



**Drum Unloading
Systems**

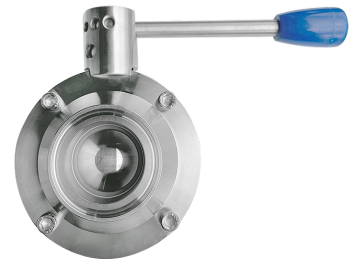


**Tote Unloading
Systems**



**Bucket Unloading
Systems**

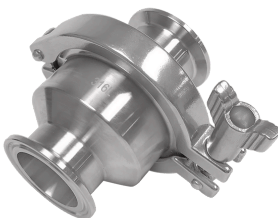
Sanitary Valves



Ball Valves



Butterfly Valves



Check Valves

Spring or Springless, Air Blow Type, Ball Type

Sanitary Valves



Control Valves



Pressure Regulating Valves



Safety Relief Valves



**Multi Port Seat Valves
3A Valves**



Diaphragm Valves



Air Vent Valves

Sanitary Valves



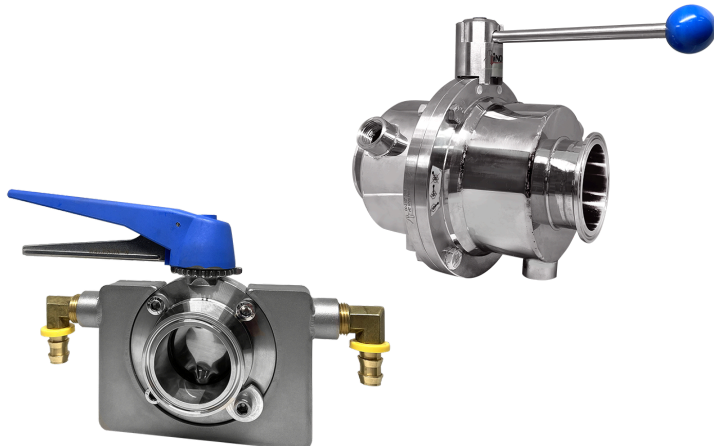
Pressure/Vacuum
Tank **Safety** Valves



Overflow Adjustable
Valves



Sampling Valves



Jacketed Valves



Steam Traps

Hoses



Rubber Fab VenAir

Wide Selection of Sanitary and Pharma hoses.

EPDM, Silicone, Teflon Lined, Chlorobutyl, Nitrile, UHMWPE, PVC.

Hydraulically crimped hoses in house.

Each hose tested prior to shipping.



**Food Grade
Crimped Hoses**

**Clear
PVC Hoses**

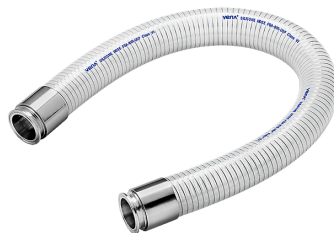
**Alcohol
Hoses Anti-Static**

**High Quality
WashDown
Hoses
With Microban®**

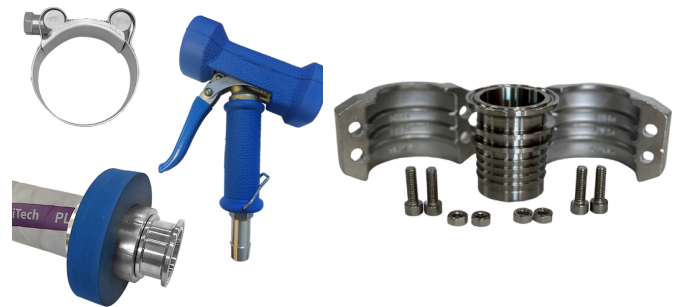
**Custom
Connections**



Jacketed Hoses



Silicone Hoses



Hose Accessories
Reusable Crimp Fittings, Hose
bumpers & More

Mixers & Agitators



Clamp-on Agitators



Vertical Shear Mixers



Side, Top & Bottom Entry Mixers



In-line Shear Mixers



Static Mixers



Powder Mixing Systems
Table Option Available



Tote Mixers

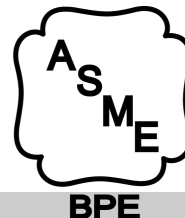


Drum Mixers

Sanitary Fittings



Tri-Clover



SS304 & SS316L 3A fittings & BPE Fittings.

Polished inside & outside.

Large inventory from 1/2" to 12".

MTRs available.



Tri-Clamp Fittings



Buttweld Fittings



Bevel Seat & John Perry Fittings



BPE & Long Tangent (AWF) Fittings for Orbital Welding Machine



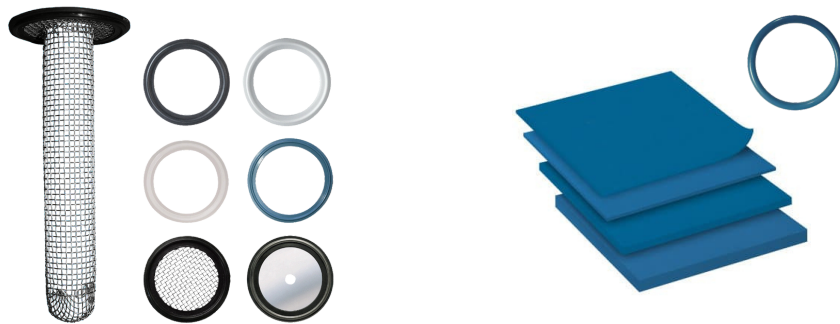
Jacketed Fittings



European DIN & SMS Fittings

Clamps & Gaskets

HS Rubber Fab



Large Selection of
FDA & USP class VI Gaskets
(X-Ray Metal Detectable, Tuf-Steel,
Bio-Pro...)

X-RAY Metal Detectable
O-rings, Sheets & more



**High-Pressure Clamps,
Smart Clamps & More**

Tubes & Hangers

BEHRINGER®



RathGibson



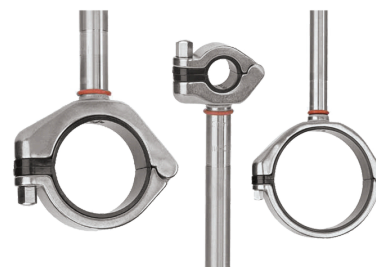
3A Approved & BPE Tubes
up to 10" in Stock



Pipetite



**Hangers with Plastic Sleeves
or Rubber Grommets**



**BEHRINGER Hygienic
Hangers & Supports**

Tank, Tote & Drum Cleaning



3A Certification available
Large Selection & Expertise in sanitary applications.



**Alfa Laval / Gamajet
Jet Machines 360°**



**Rotating
Spray Balls**



**Spray Ball Assembly for
Totes & Barrels**



**Product Recovery
Pigging Systems**



Tote Blast Stations

Filters & Strainers



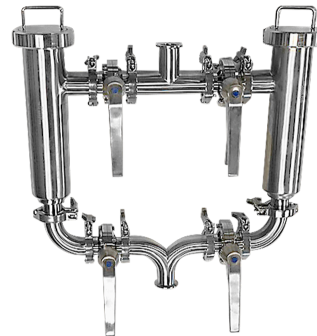
Donaldson
FILTRATION SOLUTIONS



Wedge Wire and Perforated Plate & Screen Filters



Jacketed Filters



Duplex Filters



Magnetic Strainers



Basket & Membrane Type Filters

Manhole Covers



Large Selection & Stock from 8" to 25"

SS304 & SS316L, With and Without Pressure, Full Vacuum Available, Silicone, EPDM & Teflon Seals



**Round Manhole Cover
with Pressure**



**Round Manhole Cover
without Pressure**



**Oval Manhole Cover
with Pressure**



**Oval Shadowless Manhole
Cover with Pressure**



**Rectangular Manhole Cover
with Pressure 1 lock design**



**Rectangular Manhole Cover
with Pressure 2 locks design**



**Round Manhole Cover with
Pressure with Sight Glass**



**Round Manhole Cover without
Pressure with Sight Glass**

Heat Exchangers



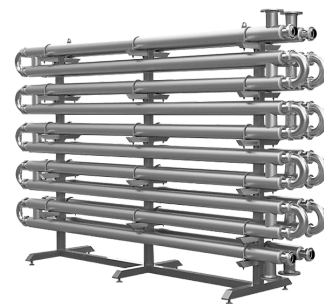
Q-docs available



Alfa Laval Baseline®, Frontline®, Hygienicline®

Several Options

- 3A Finish
- PTFE, Nitrile, EPDM Gaskets, Clips-on Glue-less Gaskets
- Plates 316L, Titanium, Hastelloy
- Wide Gap
- Double Wall
- Pasteuriser
- Evaporator/Condenser
- Semi Welded
- Welded



Alfa Laval **Tube in Tube**
Heat Exchangers



Steriflow **Sample**
Coolers



Alfa Laval Nova®
**Fusion Bonded, 100%
Stainless Steel**



Alfa Laval Contherm®
for Viscous Fluids



AIC JAD® Excellent for
Steam, Oil, Hot Water,
Thermal Fluids

Instruments



Calibration Certifications Available.



Flow Meters



Thermometers



Pressure Gauges



Temperature / Pressure Transmitters



Carbonation Stones



Sight Glasses & Tubes

Utilities



HS Economical Ball
Valves



Actuated Valves



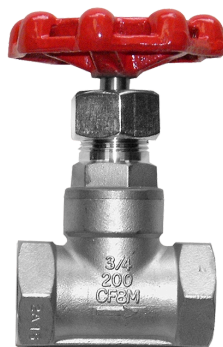
Butterfly Valves



Metal Hoses



Rubber Expansion
Joints



Globe Valves



Knife Gate Valves

Utilities



**Pressure Regulating
Valves**



Control Valves



**Temperature Regulator
Valves**



**Tank Blanketing
Valves**



**Needle
Valves**

Haleson



Montreal (QC) : 450-686-6663
Vancouver (BC) : 604-317-1447



halesoninc.com



info@halesoninc.com



2531, Chomedey Blvd, H7T 2R2,
Laval, QC, Canada



09-2025