

Haleson



- 1 Sanitary Pumps
- 2 Sanitary Pumps
- 3 Unloading Systems
- 4 Sanitary Valves
- 5 Sanitary Valves
- 6 Sanitary Valves
- 7 Hoses
- 8 Mixers & Agitators
- 9 Sanitary Fittings
- 10 Clamps & Gaskets
- 10 Tubes & Hangers
- 11 Custom Fabrication
- 12 Tank, Tote & Drum Cleaning
- 13 Filters & Strainers
- 14 Manhole Covers
- 15 Heat Exchangers
- 16 Instruments
- 17 Utilities

Sanitary Pumps



State-of-the-art sanitary pumps, designed for optimal cleanliness and efficiency.

Ensure seamless **fluid transfer** in **food, beverage** and **pharmaceutical** industries with our range of **FDA & BPE compliant** pumps.

Experience **reliable performance** and **easy maintenance**.



Centrifugal
Pumps & Carts



Self-Priming Pumps
CIP Return



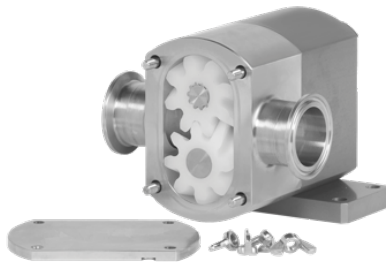
RVN Helicoidal
Impeller Pumps



Explosion Proof
Portable Pumps
Assembly



Lobe Pumps



Gear Pumps



Circumferential
Piston Pumps



Twin Screw
Pumps

Sanitary Pumps



Maximize productivity while adhering to strict regulatory standards with our customizable sanitary pump solutions.

Trust in our proven track record of delivering cutting-edge technology and unparalleled support for your sanitary pumping requirements, ensuring uninterrupted operation and peace of mind.



Meat & Poultry
Lobe Pumps



Jacketed Pumps
(for honey, chocolate...)



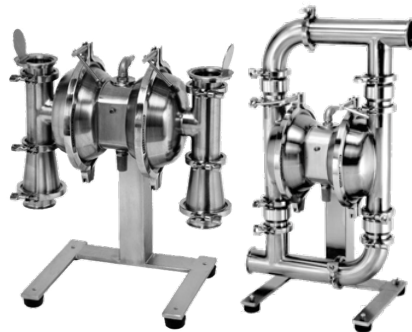
Tanker Truck
Lobe Pumps



Progressive Cavity
Pumps



Full Hygienic
Diaphragm Pumps
(Polished Internals)



Large Particles Pumped
(Meat, Whole Eggs,
Fruits...)



Diaphragm Pumps
with **Hoppers**



Diaphragm Pump
Carts with
Pulsation Dampeners

Unloading Systems



Unloading systems are an excellent alternative on the market for **pumping high viscosity** products (tomato paste, almond paste, peanut butter) or shear-sensitive materials (whole eggs, fruits, chicken breasts).

Unloading systems are designed to discharge **all types of containers** (drums, totes, kettles) due to their **self-priming** feature and the ability to **run dry without damage**.



Tote Unloading Pumps



Drum & Barrel Pumps



**Plastic Diaphragm
CIP & Chemical Pumps**



**Drum Unloading
Systems**

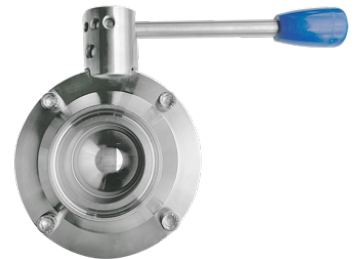


**Tote Unloading
Systems**



**Bucket Unloading
Systems**

Sanitary Valves



Ball Valves



Butterfly Valves



Check Valves

Spring or Springless, Air Blow Type, Ball Type

Sanitary Valves



Control Valves



Pressure Regulating Valves



Safety Relief Valves



Multi Port Seat Valves
3A Valves



Diaphragm Valves



Air Vent Valves

Sanitary Valves



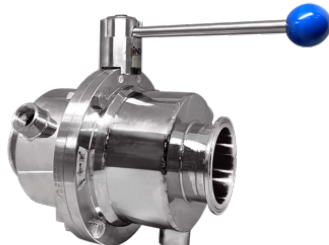
Pressure/Vacuum
Tank Safety Valves



Overflow Adjustable
Valves



Sampling Valves



Jacketed Valves



Steam Traps

Hoses



Wide Selection of Sanitary and Pharma hoses.

EPDM, Silicone, Teflon Lined, Chlorobutyl, Nitrile, UHMWPE, PVC.

Hydraulically crimped hoses in house.

Each hose tested prior to shipping.



Food Grade Crimped Hoses

Clear PVC Hoses

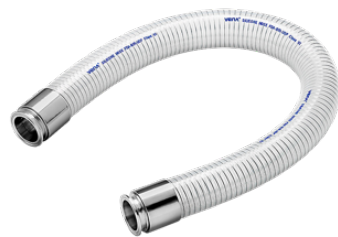
Alcohol Hoses Anti-Static

High Quality WashDown Hoses With Microban®

Custom Connections



Jacketed Hoses



Silicone Hoses



Hose Accessories
Reusable Crimp Fittings, Hose bumpers & More

Mixers & Agitators



Clamp-on Agitators



Vertical Shear Mixers



Side, Top & Bottom Entry Mixers



In-line Shear Mixers



Static Mixers



Powder Mixing Systems
Table Option Available



Tote Mixers



Drum Mixers

Sanitary Fittings



SS304 & SS316L 3A fittings & BPE Fittings.

Polished inside & outside.

Large inventory from 1/2" to 12".

MTRs available.



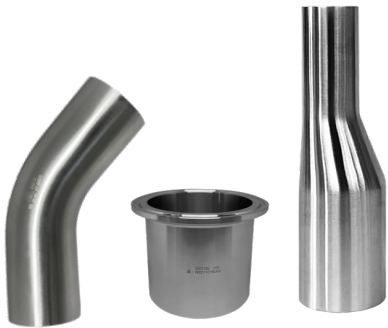
Tri-Clamp Fittings



Buttweld Fittings



Bevel Seat & John Perry Fittings



BPE & Long Tangent (AWF) Fittings for Orbital Welding Machine



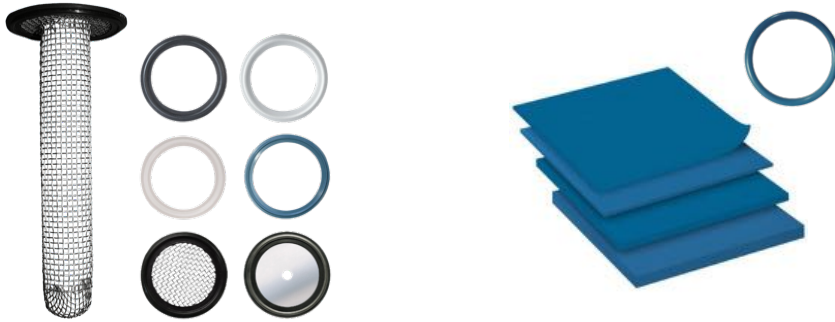
Jacketed Fittings



European DIN & SMS Fittings

Clamps & Gaskets

HS Rubber Fab



Large Selection of
FDA & USP class VI Gaskets
(X-Ray Metal Detectable, Tuf-Steel,
Bio-Pro...)

X-RAY Metal Detectable
O-rings, Sheets & more



**High-Pressure Clamps,
Smart Clamps & More**

Tubes & Hangers



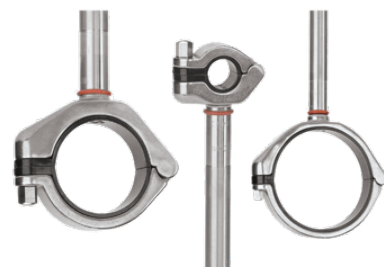
3A Approved & BPE Tubes
up to 10" in Stock



Pipette



Hangers with Plastic Sleeves
or **Rubber Grommets**

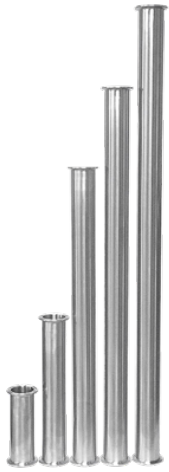


BEHRINGER Hygienic
Hangers & Supports

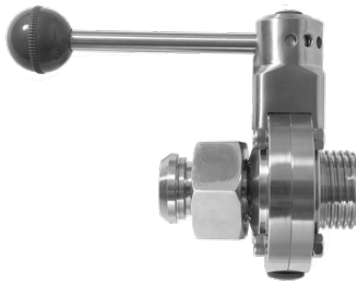
Custom Fabrication



Components in stock | Rapid turnaround time.
Orbital welding and Passivation service available.



Spool Pieces



European Connections
in Stock



Custom Manifolds



Pump Carts with Flowmeter
& Control Panel



Custom Tanks



Custom Mixing Bowls
& Carts

Tank, Tote & Drum Cleaning



3A Certification available
Large Selection & Expertise in sanitary applications.



Alfa Laval / Gamajet
Jet Machines 360°



**Rotating
Spray Balls**



**Spray Ball Assembly for
Totes & Barrels**



**Product Recovery
Pigging Systems**



**Mobile
CIP Systems**



Tote Blast Stations

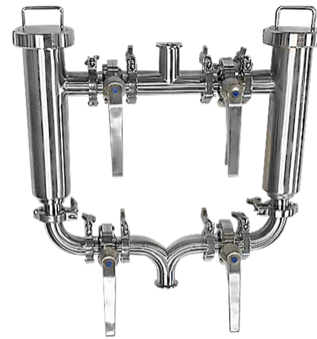
Filters & Strainers



Wedge Wire and Perforated Plate & Screen Filters



Jacketed Filters



Duplex Filters



Magnetic Strainers



Basket & Membrane Type Filters

Manhole Covers



Large Selection & Stock from 8" to 25"

SS304 & SS316L, With and Without Pressure, Full Vacuum Available, Silicone, EPDM & Teflon Seals



Round Manhole Cover with Pressure



Round Manhole Cover without Pressure



Oval Manhole Cover with Pressure



Oval Shadowless Manhole Cover with Pressure



Rectangular Manhole Cover with Pressure 1 lock design



Rectangular Manhole Cover with Pressure 2 locks design



Round Manhole Cover with Pressure with Sight Glass



Round Manhole Cover without Pressure with Sight Glass

Heat Exchangers



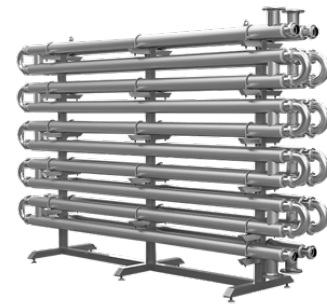
Q-docs available



Alfa Laval Baseline®, Frontline®, Hygienicline®

Several Options

- 3A Finish
- PTFE, Nitrile, EPDM Gaskets, Clips-on Glue-less Gaskets
- Plates 316L, Titanium, Hastelloy
- Wide Gap
- Double Wall
- Pasteuriser
- Evaporator/Condenser
- Semi Welded
- Welded



Alfa Laval **Tube in Tube** Heat Exchangers



Steriflow **Sample Coolers**



Alfa Laval Nova® **Fusion Bonded, 100% Stainless Steel**



Alfa Laval Contherm® **for Viscous Fluids**



AIC JAD® Excellent for Steam, Oil, Hot Water, Thermal Fluids

Instruments



Calibration Certifications Available.



Flow Meters



Thermometers



Pressure Gauges



Temperature / Pressure Transmitters



Carbonation Stones



Sight Glasses & Tubes

Utilities



HS Economical Ball Valves



Actuated Valves



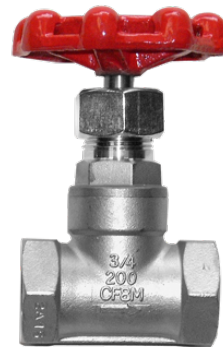
Butterfly Valves



Metal Hoses



Rubber Expansion Joints



Globe Valves



Knife Gate Valves

Haleson



Montreal (QC) : 450-686-6663

Vancouver (BC) : 604-317-1447



halesoninc.com



info@halesoninc.com



2531, Chomedey Blvd, H7T 2R2,

Laval, QC, Canada