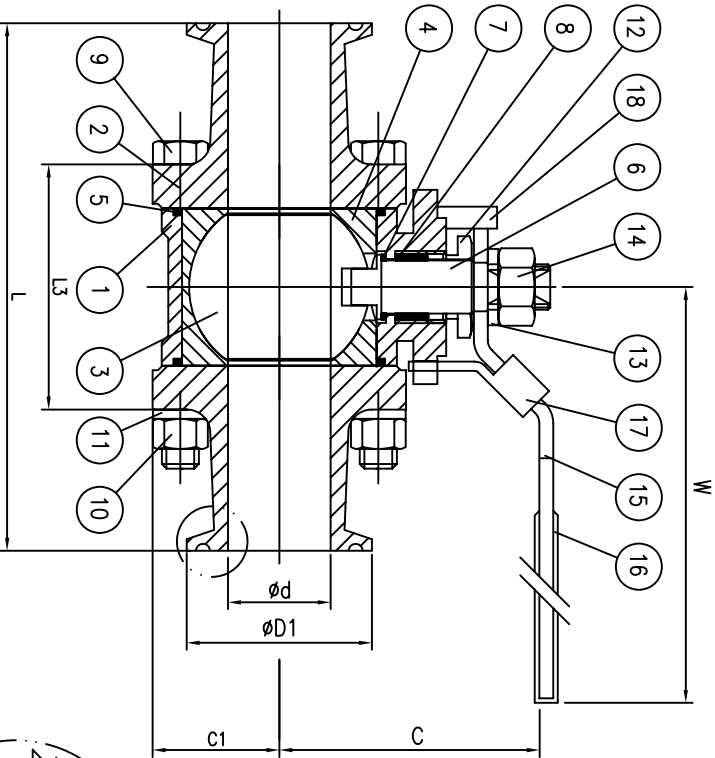
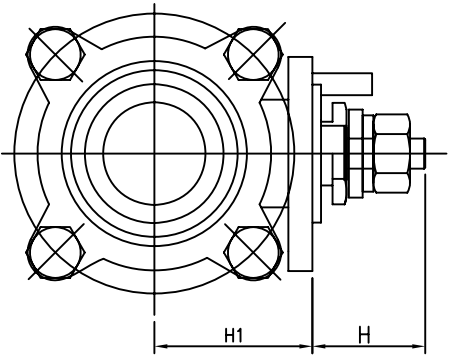
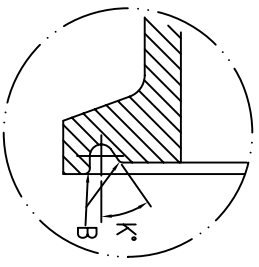


- P-A3TC  
THREE PIECE SANITARY  
BALL VALVE T/T CLAMP
- FEATURES:
- LOCKING DEVICE
  - BLOW-OUT PROOF STEM/SOLID BALL
  - HIGH PERFORMANCE
  - MOUNTING PAD IN ACCORDING WITH ISO 5211 STANDARD
  - CAST STAINLESS STEEL
  - MATERIAL ASTM-CF8M-A351,
  - ASTM-CF3M-A351
  - END CAP CF8M & CF3M L(DIN 1.4403)
  - \*BALL & END POLISHED RATE 20RA
  - \*Cavity Fill Seats
  - SIZE AVAILABLE FROM 1/2" TO 4"



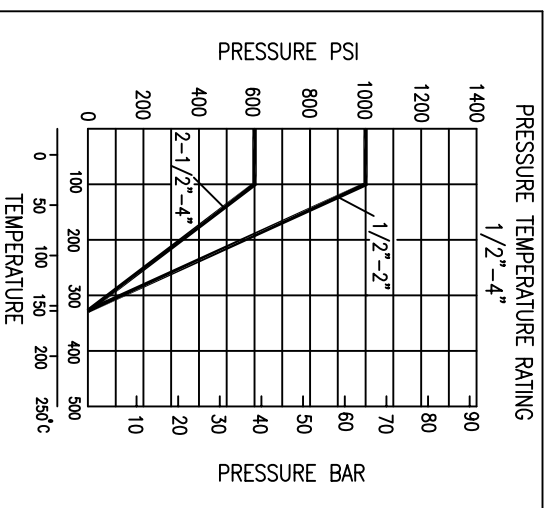
□ DIMENSION(M.M.)

SIZE	DN	ISO-5211	H	C	B	K'	L	W	φd	φD1	L1	L3	C1	H1	T	R
1/2"	15	F03	18.0	60	0.3	35	89	132	9.5	25.4	32.8	43.5	24.5	29.5	10	5.0 M8*P1.25
3/4"	20	F03	18.5	65	0.3	35	101	132	15.9	25.4	36.5	48	27	34	10	5.0 M8*P1.25
1"	25	F04	22.5	69	1.2	23	114	165	22.2	50.4	40.0	53	29.2	34.5	12	6.5 M8*P1.25
1-1/2"	40	F05	29.6	89	1.2	46	140	194	35	50.4	43.5	75	40.3	48	16.6	8.5 M12*P1.75
2"	50	F05	29.6	97	1.2	46	156	194	47.6	63.9	45.8	88.5	47.6	45	16.6	8.5 M12*P1.75
2-1/2"	65	F07	44.5	127	1.2	46	197	252	60.3	77.5	56.0	111	62	75.8	20.5	12 3/4*10UNC
3"	80	F07	44.5	135	1.2	46	229	252	73.0	90.9	64.5	130	68.7	84.5	20.5	12 3/4*10UNC
4"	100	F10	48.8	159	1.2	46	243	333	97.4	118.9	60.6	153.5	100.5	105	25.5	16 1*8UNC



□ MATERIAL OF CONSTRUCTION

ITEM	PARTS	MATERIAL	QTY
1	BODY	ASTM-A351-CF8M	1
2	CAP	ASTM-A351-CF8M	2
3	BALL	A351-CF8M	1
4	CAVITY FILL SEATS	VIRGIN PTFE	2
5	GASKET	VIRGIN PTFE	2
6	STEM	ASI-316	1
7	THRUST WASHER	VIRGIN PTFE	1
8	STEM PACKING	VIRGIN PTFE	1
9	BOLT	ASI-304	4/6
10	HEX NUT	ASI-304	4/8/12
11	BOLT WASHER	ASI-304	4/8/12
12	GLAND	ASI-304	1
13	WASHER	ASI-304	1
14	NUT	ASI-304	1
15	HANDLE	ASI-304	1
16	PLASTIC COVER	PLASTIC	1
17	LOCK DEVICE	ASI-304	1
18	STOP PIN	ASI-304	1



UNIT	M.M.	SIZE	1/2" ~ 4"
FINISH		TITLE	
MATERIAL		NO	P-A3TC
Q'TY			
DATE	2008.04.21		

**Halason**

SCALE 1:2:1