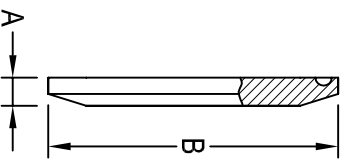


HS-16AMP CLAMP SOLID END CAP



CLAMP SIZE	A	B	SS-304 Item No.	SS-316L Item No.
1/2" - 3/4"	0.188	0.992	0.50"-0.75" HS-16AMP-4-7	0.50"-0.75" HS-16AMP-6-7
1" - 1 1/2"	0.250	1.984	1.00"-1.50" HS-16AMP-4-7	1.00"-1.50" HS-16AMP-6-7
2"	0.250	2.516	2.00" HS-16AMP-4-7	2.00" HS-16AMP-6-7
2 1/2"	0.250	3.047	2.50" HS-16AMP-4-7	2.50" HS-16AMP-6-7
3"	0.250	3.579	3.00" HS-16AMP-4-7	3.00" HS-16AMP-6-7
4"	0.312	4.682	4.00" HS-16AMP-4-7	4.00" HS-16AMP-6-7
5"	0.344	5.687	5.00" HS-16AMP-4-7	5.00" HS-16AMP-6-7
6"	0.438	6.570	6.00" HS-16AMP-4-7	6.00" HS-16AMP-6-7
8"	0.438	8.570	8.00" HS-16AMP-4-7	8.00" HS-16AMP-6-7
10"	0.438	10.570	10.00" HS-16AMP-4-7	10.00" HS-16AMP-6-7
12"	0.438	12.570	12.00" HS-16AMP-4-7	12.00" HS-16AMP-6-7

All dimensions in inches.

May 2020



www.halesoninc.com