



TOP-FLO[®] Filters and Strainers



Stainless Steel Flow Control Equipment for the Food,
Beverage, Dairy, Cosmetics, Pharmaceutical ,
Biotechnology, and Electronics Processing Industries

TOP-FLO® Filters and Strainers

TOP-FLO® in-line stainless steel filters and strainers are specifically designed for the removal of unwanted particles from process line content providing added protection and longer service life for pumps, valves, heat exchangers and other processing equipment.

Constructed of corrosion-fighting 316L stainless steel, **TOP-FLO®** in-line filters and strainers feature a sanitary design plus ease of installation and quick cleanup. These rugged, yet lightweight strainers are available in two lengths and are interchangeable with other comparable strainers.

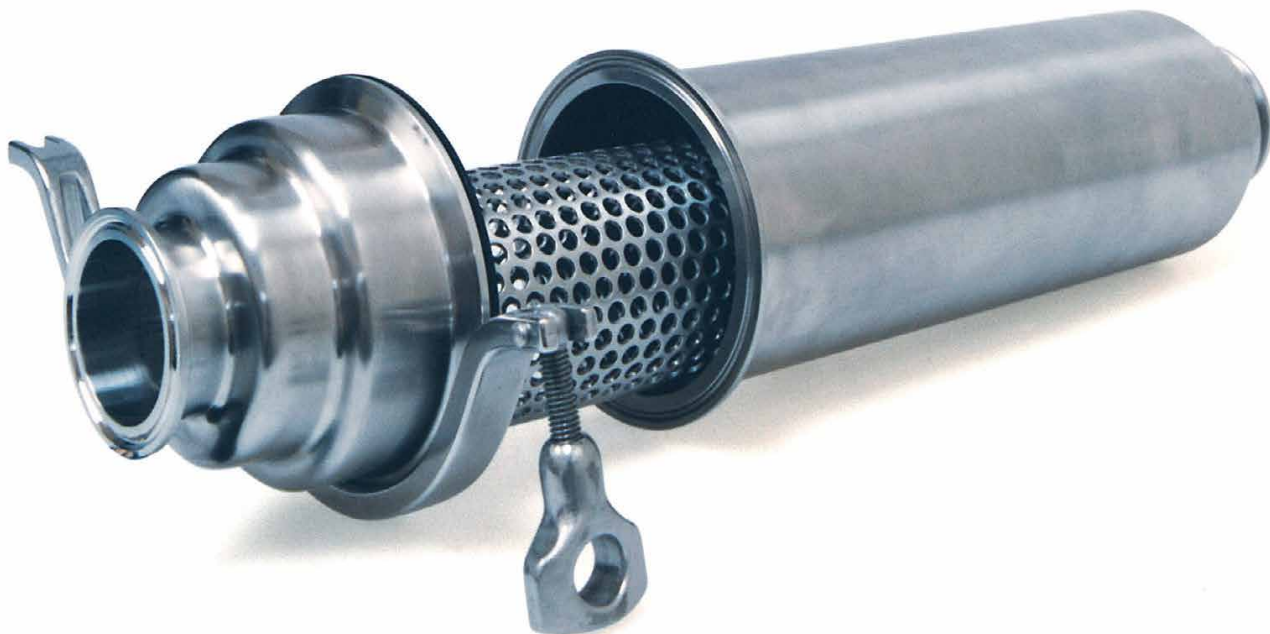
The **TOP-FLO®** strainer is ideally suited to hygienic process applications including dairy, food, beverage, pharmaceutical, and biotechnology.

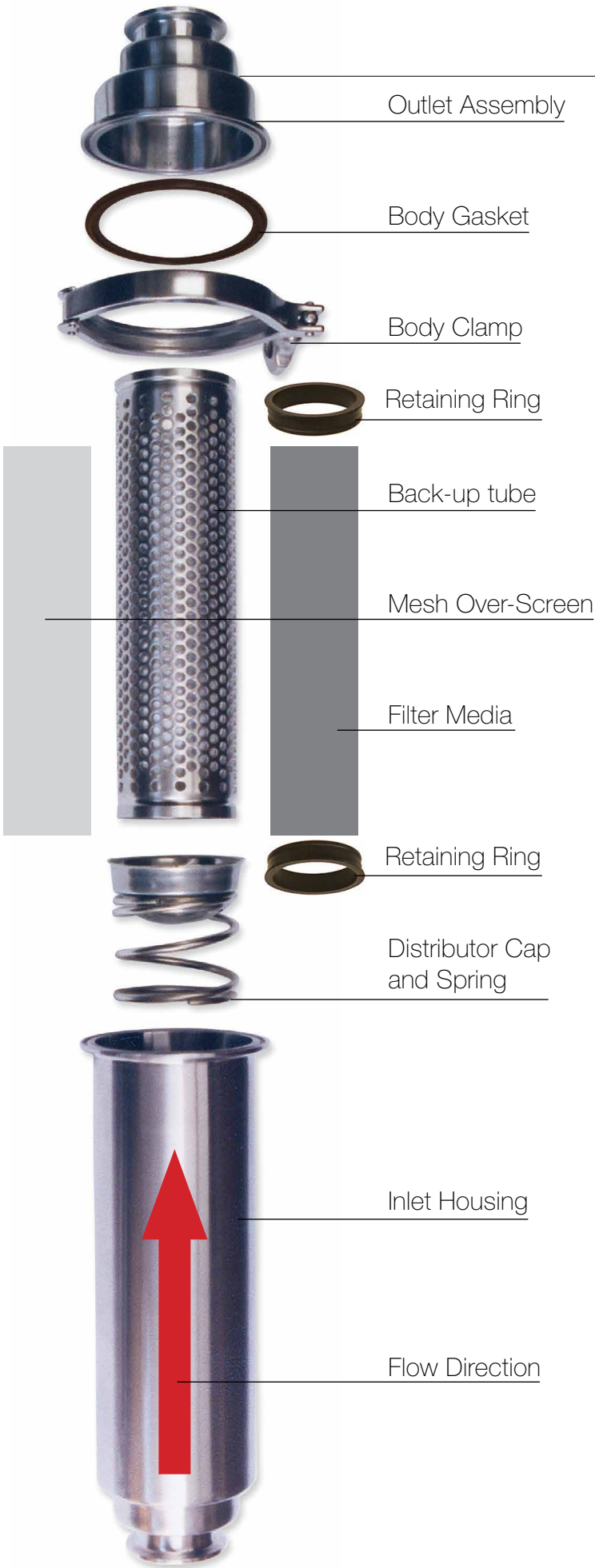
Top Line . . . great solutions in process.

Top Line offers in-line strainers in short 15-3/4" OAL and long 35-3/8" OAL.

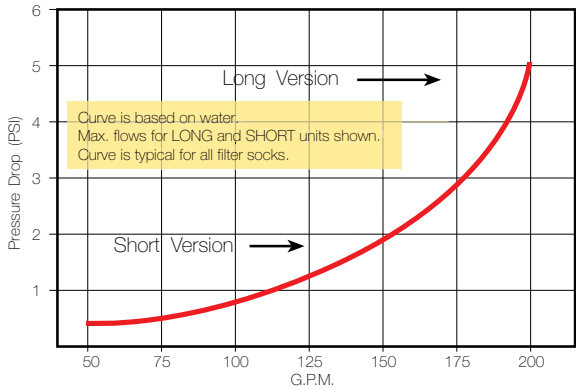
Standard filters for fine particle removal - 765 micron to 40 micron offered.

A reusable wire mesh overscreen is offered for strainers where larger particle removal - 1905 micron to 73 micron is needed.

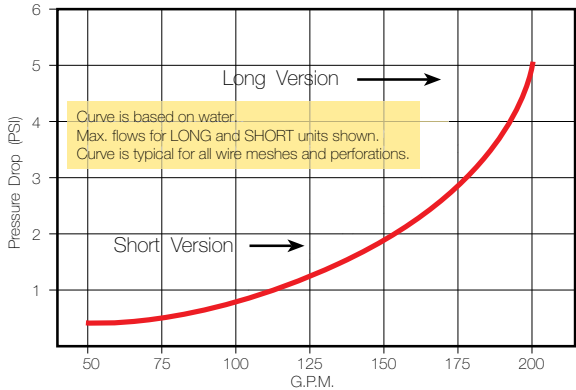




Filter Pressure Drop Curves
TOP-FLO® Filters

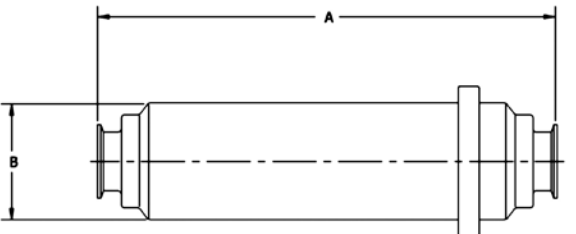


Filter Pressure Drop Curves
TOP-FLO® Strainers



TOP-FLO® Dimensions (inches)

Connection Size		A Length (in.)	B Diameter (in.)	Effective Filter Area (ft. ²)
Short	1	15-3/4	4	0.65
	1-1/2	15-3/4	4	0.65
	2	15-3/4	4	0.65
	2-1/2	15-3/4	4-1/2	0.75
	3	15-3/4	4-1/2	0.75
Long	1-1/2	35-3/8	4	1.95
	2	35-3/8	4	1.95
	2-1/2	35-3/8	4-1/2	2.25
	3	35-3/8	4-1/2	2.25



Replacement Strainer Selection

Perforated Metal Strainer Single Screen						
Screen Part No.	Port Connections	Gauge	Hole Diameter (in.)	Holes Per Square Inch	% of Open Area	
Short	BTS-1020	1	14	1/4 / .250	9	58
	BTS-1020	1-1/2	14	1/4 / .250	9	58
	BTS-1020	2	14	1/4 / .250	9	58
	BTS-2530	2-1/2	12	1/4 / .250	9	58
	BTS-2530	3	12	1/4 / .250	9	58
Long	BTL-1020	1-1/2	14	1/4 / .250	9	58
	BTL-1020	2	14	1/4 / .250	9	58
	BTL-2530	2-1/2	12	1/4 / .250	9	58
	BTL-2530	3	12	1/4 / .250	9	58

1/8 / .125 hole diameter perforated back up tube upon request

Wire Cloth Mesh Over Screens

Screen Part No.	Square Mesh Size	Space Between Wires (in.)	Micron Rating	% of Open Area
OS16-XX	16	0.045	1130	50.7
OS20-XX	20	0.034	864	46.2
OS30-XX	30	0.021	533	40.8
OS40-XX	40	0.015	381	36.0
OS50-XX	50	0.011	279	30.3
OS60-XX	60	0.009	229	30.3
OS80-XX	80	0.007	178	31.4
OS100-XX	100	0.006	140	30.3
OS120-XX	120	0.005	117	30.7
OS150-XX	150	0.004	104	37.4

Prefix: S - Short, L - Long Suffix: 1020 - 1"-2", 2530 - 2-1/2"-3"
 Example: SOS16-2530 - Short Over Mesh, #16, for 2-1/2" and 3" Strainer

Replacement Filter Media Schedule

Media	Micron Rating*	Description
F40-XX	40	NON-WOVEN RAYON
F80-XX	80	POLYESTER SCREEN
F150-XX	150	POLYESTER SCREEN
F250-XX	250	SMOOTH WEAVE DACRON
F300-XX	300	COTTON CHEESECLOTH
F350-XX	350	POLYESTER KNIT
F400-XX	400	PLAIN WEAVE POLYESTER
F500-XX	500	COTTON FLANNEL
F765-XX	765	NYLON LENO

*Average
 Prefix: S - Short, L - Long Suffix: 1020 - 1"-2", 2530 - 2-1/2"-3"
 Example: LF350-1020 - Long Filter Media, 350 Micron Polyester Knit for 1"-2" Filter



FILTRATION

TOP-FLO® filters can be furnished with any one of seven filtering media down to 40 microns including non-woven rayon, cotton, cheesecloth, nylon mesh, and woven nylon.



FINE OR MEDIUM STRAINER

Complete with a backup tube and overscreen with small perforations or wire mesh for removing finer particles (73 to 1130 microns).

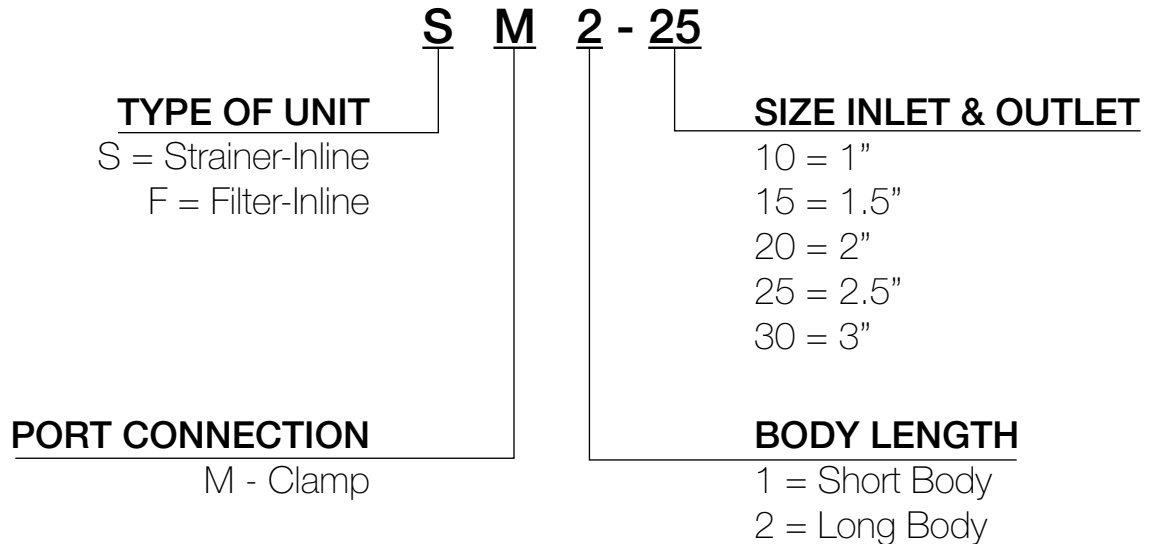


COARSE STRAINER

Furnished with a single perforated screen for straining large particles.

Ordering Information and Specifications

COMPLETE FILTER OR STRAINER UNIT



EXAMPLE:

A model SM2-25 is a 316L SS inlet long strainer with 2.5" clamp connections.

NOTES:

The standard perforated back-up tube with .25" holes is provided with the unit. Top Line also has .125" perforated back-up tube upon request. Overscreens and filter media are not provided with the unit and must be ordered separately.

Material Traceability:

Material Test Reports are available for inlet housing and outlet cap.

Certificate of Compliance for 316L material is available for the distributor cap, spring, and backup tube.

TOP LINE

PROCESS EQUIPMENT COMPANY

. . . the source for
all your product needs
in the process industries

Contact your Top Line Representative for Assistance

Office: P.O. Box 264 · Bradford, PA 16701

Plant: 21 Valley Hunt Drive · Lewis Run, PA 16738

800-458-6095

814-362-4626

Fax: 814-362-4453

PUMPS & STRAINERS - Centrifugal, Rotary Lobe, Filters and Strainers



VALVES - Manual, Actuated, Diaphragm



FITTINGS - Clamp, Sanitary Butt-Weld, Bevel Seat, Tube OD Butt-Weld, Custom, Biopharm



TUBING, GAUGES, SIGHT GLASSES, BRAIDED HOSE

