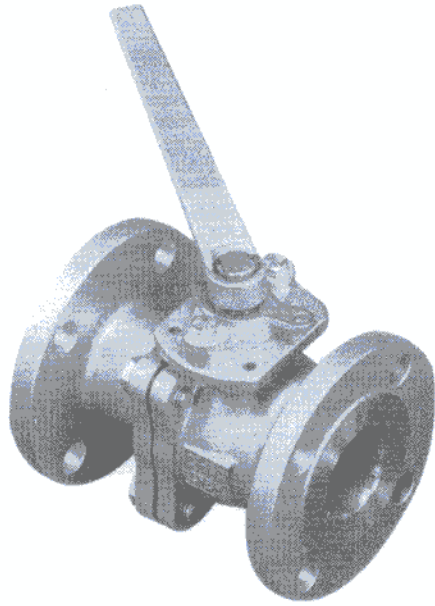




P-F2, 2-PIECE FLANGED END STAINLESS STEEL BALL VALVE INVESTMENT CASTING, ANSI CLASS 150 LBS, FULL BORE



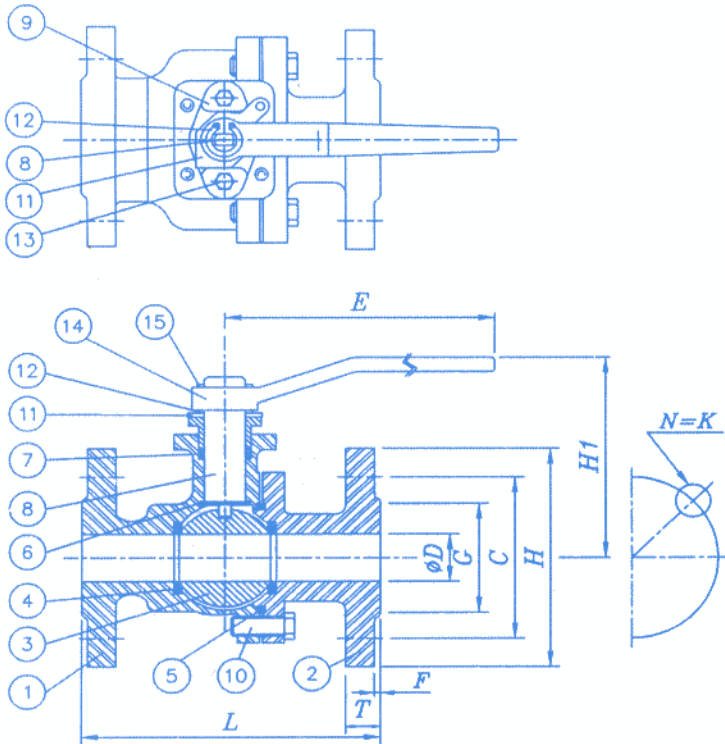
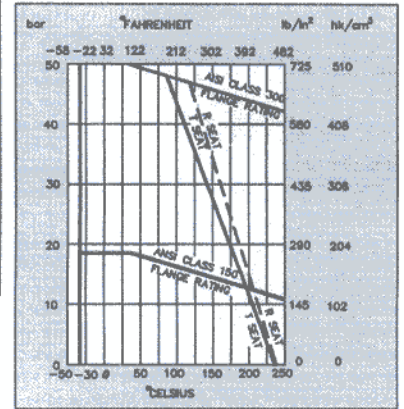
FEATURES :

- * MATERIAL :
STAINLESS STEEL (ASTM-A351-CF8M)
CARBON STEEL (ASTM-A216-WCB), S-45C
- * TRIM IN ASTM S.S. 316
- * ANTI-STATIC DEVICE
- * FLANGE: ANSI B16.5 CLASS 150 LBS
- * BLOW-OUT PROOF STEM
- * FACE TO FACE: ANSI B16.10
- * LEVER OPERATED * SOLID BALL
- * Body, end caps, ball, quality investment casting
- * 100% air tested under water, open and closed positions
- * WALL THICKNESS : ANSI B16.34 - 150 LBS
- * AIR TEST : SHELL = 80 PSI, SEAT = 80 PSI
- * HYDRAULIC TEST : SHELL = 425 PSI, SEAT = 300 PSI

OPTIONS :

- * CF8M - Solution Heat Treatment,
- * WCB - Normalizing Heat Treatment

NOMINAL SIZE		φD	H	C	G	T	K	N	F	L	E	H1	TORQUE INCH/LBS	KGS
INCH	MM													
1/2	15	15	88.9	60.5	35	11.2	15.8	4	1.6	108	123	77	150	2.0
3/4	20	20	98.6	70	43	11.2	15.8	4	1.6	117.6	123	77	180	4.0
1	25	25	108	79.3	50.8	11.2	15.8	4	1.6	127	146	72	200	4.2
1-1/4	32	32	117.4	89	63.5	12.7	15.8	4	1.6	139.7	146	90	210	5.2
1-1/2	40	40	127	98.6	73.2	14.2	15.8	4	1.6	165	232	117	480	6.0
2	50	50	152.4	120.7	92	15.8	19	4	1.6	175	232	117	516	9.0
2-1/2	65	65	177.8	140	104.7	17.5	19	4	1.6	190.5	232	172	564	15.0
3	80	80	190.5	152.4	127	19	19	4	1.6	205	420	172	1080	17.0
4	100	100	228.6	190.5	157.2	24	19	8	1.6	228.6	420	188	1584	30.0



NO.	NAME OF PARTS	MATERIALS (CF8M)	Q'TY
1	BODY	ASTM A351-CF8M/WCB	1
2	CAP	ASTM A351-CF8M/WCB	1
3	BALL	ASTM A351-CF8M	1
4	SEAT	PTFE (RTFE)	2
5	JOINT GASKET	PTFE	1
6	THRUST BEARING	PTFE	1
7	STEM PACKING	PTFE	1
8	STEM	AISI 316	1
9	GLAND RING	AISI 304	1
10	BOLT	ASTM A193-B8	1 SET
11	STOPPER	ASTM A276-CF8	1
12	SNAP RING	ASTM A276-CF8	1
13	GLAND BOLT	ASTM A193-B8	2
14	HANDLE	ASTM A36 (A536)	1
15	SNAP RING	ASTM A276-CF8	1