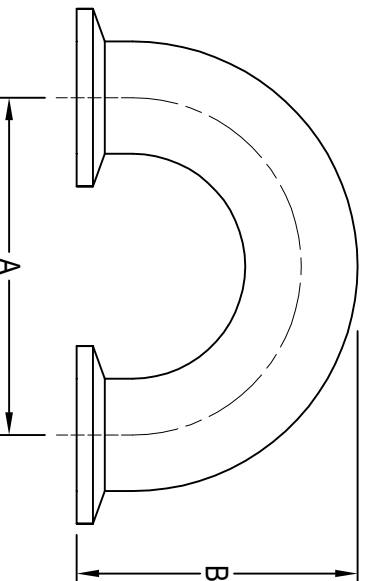


HS-2WUMP CLAMP 180° RETURN BEND



CLAMP SIZE	A	B	Wall Thickness	SS-304 Item No.	SS-316L Item No.
1"	3.000	2.500	0.065	1.00" HS-2WUMP-4-7	1.00" HS-2WUMP-6-7
1½"	4.500	3.500	0.065	1.50" HS-2WUMP-4-7	1.50" HS-2WUMP-6-7
2"	6.000	4.500	0.065	2.00" HS-2WUMP-4-7	2.00" HS-2WUMP-6-7
2½"	7.500	5.500	0.065	2.50" HS-2WUMP-4-7	2.50" HS-2WUMP-6-7
3"	9.000	6.500	0.065	3.00" HS-2WUMP-4-7	3.00" HS-2WUMP-6-7
4"	12.000	8.625	0.083	4.00" HS-2WUMP-4-7	4.00" HS-2WUMP-6-7
6"	18.000	9.875	0.109	6.00" HS-2WUMP-4-7	6.00" HS-2WUMP-6-7

All dimensions in inches.

JAN 2021



www.halesoninc.com