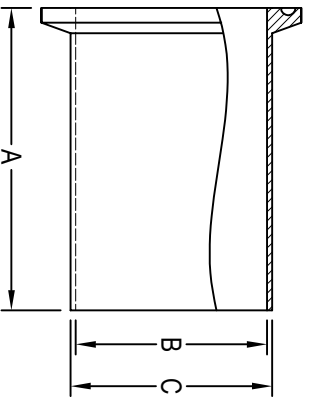


## HS-14WLMP TANK FERRULE (LIGHT DUTY)



CLAMP SIZE	A	B	C	Wall Thickness	SS-304 Item No.	SS-316L Item No.
1"	3.000	.870	1.000	0.065	1.00" HS-14WLMP-4-7	1.00" HS-14WLMP-6-7
1½"	3.000	1.370	1.500	0.065	1.50" HS-14WLMP-4-7	1.50" HS-14WLMP-6-7
2"	3.000	1.870	2.000	0.065	2.00" HS-14WLMP-4-7	2.00" HS-14WLMP-6-7
2½"	3.000	2.370	2.500	0.065	2.50" HS-14WLMP-4-7	2.50" HS-14WLMP-6-7
3"	4.000	2.870	3.000	0.065	3.00" HS-14WLMP-4-7	3.00" HS-14WLMP-6-7
4"	4.000	3.834	4.000	0.083	4.00" HS-14WLMP-4-7	4.00" HS-14WLMP-6-7
5"	4.000	4.834	5.000	0.083	5.00" HS-14WLMP-4-7	5.00" HS-14WLMP-6-7
6"	6.000	5.782	6.000	0.109	6.00" HS-14WLMP-4-7	6.00" HS-14WLMP-6-7
8"	6.000	7.782	8.000	0.109	8.00" HS-14WLMP-4-7	8.00" HS-14WLMP-6-7
10"	6.000	9.782	10.000	0.109	10.00" HS-14WLMP-4-7	10.00" HS-14WLMP-6-7
12"	6.000	11.782	12.000	0.109	12.00" HS-14WLMP-4-7	12.00" HS-14WLMP-6-7

All dimensions in inches.

JAN 2021



[www.halesoninc.com](http://www.halesoninc.com)