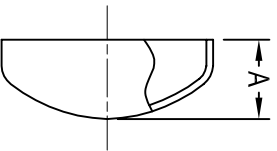


HS-16W WELD CAP



TUBE OD	A	Wall Thickness	SS-304 Item No.	SS-316L Item No.
1/2"	.250	0.065	0.50" HS-16W-4-7	0.50" HS-16W-6-7
3/4"	.312	0.065	0.75" HS-16W-4-7	0.75" HS-16W-6-7
1"	.375	0.065	1.00" HS-16W-4-7	1.00" HS-16W-6-7
1 1/2"	.562	0.065	1.50" HS-16W-4-7	1.50" HS-16W-6-7
2"	.750	0.065	1.00" HS-16W-4-7	1.00" HS-16W-6-7
2 1/2"	1.000	0.065	2.50" HS-16W-4-7	2.50" HS-16W-6-7
3"	1.250	0.065	3.00" HS-16W-4-7	3.00" HS-16W-6-7
4"	1.500	0.083	4.00" HS-16W-4-7	4.00" HS-16W-6-7
6"	2.000	0.109	6.00" HS-16W-4-7	6.00" HS-16W-6-7
8"	2.888	0.109	8.00" HS-16W-4-7	8.00" HS-16W-6-7
10"	3.395	0.109	10.00" HS-16W-4-7	10.00" HS-16W-6-7
12"	3.815	0.109	12.00" HS-16W-4-7	12.00" HS-16W-6-7

All dimensions in inches.

JAN. 2021



www.halesoninc.com