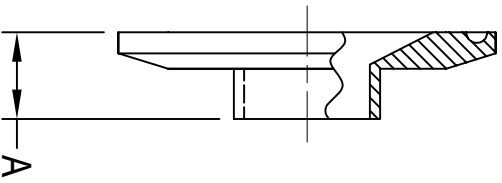


# HS-31WMP REDUCING FERRULE

SIZE CLAMP x TUBE O.D.	A	Wall Thickness	SS-304 Item No.	SS-316L Item No.
3/4" x 1/2"	0.500	0.065	0.75" x 0.50" HS-31WMP-4-7	0.75" x 0.50" HS-31WMP-6-7
1" x 1/2"	0.500	0.065	1.00" x 0.50" HS-31WMP-4-7	1.00" x 0.50" HS-31WMP-6-7
1" x 3/4"	0.500	0.065	1.00" x 0.75" HS-31WMP-4-7	1.00" x 0.75" HS-31WMP-6-7
1 1/2" x 1/2"	0.500	0.065	1.50" x 0.50" HS-31WMP-4-7	1.50" x 0.50" HS-31WMP-6-7
1 1/2" x 3/4"	0.500	0.065	1.50" x 0.75" HS-31WMP-4-7	1.50" x 0.75" HS-31WMP-6-7
1 1/2" x 1"	0.500	0.065	1.50" x 1.00" HS-31WMP-4-7	1.50" x 1.00" HS-31WMP-6-7
2" x 1"	0.500	0.065	2.00" x 1.00" HS-31WMP-4-7	2.00" x 1.00" HS-31WMP-6-7
2" x 1 1/2"	0.500	0.065	2.00" x 1.50" HS-31WMP-4-7	2.00" x 1.50" HS-31WMP-6-7
2 1/2" x 2"	0.500	0.065	2.50" x 2.00" HS-31WMP-4-7	2.50" x 2.00" HS-31WMP-6-7
3" x 2"	0.500	0.065	3.00" x 2.00" HS-31WMP-4-7	3.00" x 2.00" HS-31WMP-6-7
4" x 3"	0.625	0.065	4.00" x 3.00" HS-31WMP-4-7	4.00" x 3.00" HS-31WMP-6-7



All dimensions in inches.