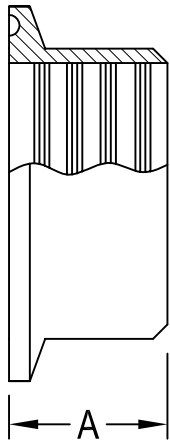


HS-31RMP RECESSLESS REDUCING FERRULE



SIZE CLAMP x TUBE O.D.	A	SS-304 Item No.	SS-316 Item No.
1-1/2" x 1/2"	0.750	1.50" x 0.50" HS-31RMP-4-7	1.50" x 0.50" HS-31RMP-6-7
1-1/2" x 3/4"	0.750	1.50" x 0.75" HS-31RMP-4-7	1.50" x 0.75" HS-31RMP-6-7
1-1/2" x 1"	0.750	1.50" x 1.00" HS-31RMP-4-7	1.50" x 1.00" HS-31RMP-6-7
2" x 1"	0.750	2.00" x 1.00" HS-31RMP-4-7	2.00" x 1.00" HS-31RMP-6-7
2" x 1-1/2"	1.125	2.00" x 1.50" HS-31RMP-4-7	2.00" x 1.50" HS-31RMP-6-7
2-1/2" x 1"	1.125	2.50" x 1.00" HS-31RMP-4-7	2.50" x 1.00" HS-31RMP-6-7
2-1/2" x 1-1/2"	1.125	2.50" x 1.50" HS-31RMP-4-7	2.50" x 1.50" HS-31RMP-6-7
2-1/2" x 2"	1.312	2.50" x 2.00" HS-31RMP-4-7	2.50" x 2.00" HS-31RMP-6-7
3" x 1"	1.312	3.00" x 1.00" HS-31RMP-4-7	3.00" x 1.00" HS-31RMP-6-7
3" x 1-1/2"	1.312	3.00" x 1.50" HS-31RMP-4-7	3.00" x 1.50" HS-31RMP-6-7
3" x 2"	1.312	3.00" x 2.00" HS-31RMP-4-7	3.00" x 2.00" HS-31RMP-6-7
3" x 2-1/2"	1.375	3.00" x 2.50" HS-31RMP-4-7	3.00" x 2.50" HS-31RMP-6-7
4" x 2-1/2"	1.375	4.00" x 2.50" HS-31RMP-4-7	4.00" x 2.50" HS-31RMP-6-7
4" x 3"	1.438	4.00" x 3.00" HS-31RMP-4-7	4.00" x 3.00" HS-31RMP-6-7

All dimensions in inches.