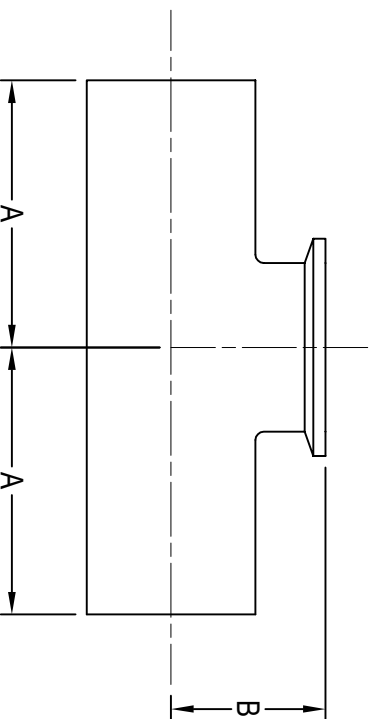


BPE HS-7WWMMS TEE WELD X WELD X SHORT OUTLET CLAMP



CLAMP SIZE	A	B	Wall Thickness	BPE SS-316L Item No.
1/2"	1.875	1.000	0.065	0.50" HS-7WWMMS-B-7
3/4"	2.000	1.125	0.065	0.75" HS-7WWMMS-B-7
1"	2.125	1.125	0.065	1.00" HS-7WWMMS-B-7
1 1/2"	2.375	1.375	0.065	1.50" HS-7WWMMS-B-7
2"	2.875	1.625	0.065	2.00" HS-7WWMMS-B-7
2 1/2"	3.125	1.875	0.065	2.50" HS-7WWMMS-B-7
3"	3.375	2.125	0.065	3.00" HS-7WWMMS-B-7
4"	4.125	2.750	0.083	4.00" HS-7WWMMS-B-7
6"	5.625	4.625	0.109	6.00" HS-7WWMMS-B-7

All dimensions in inches.

JUNE 2021



www.halesoninc.com