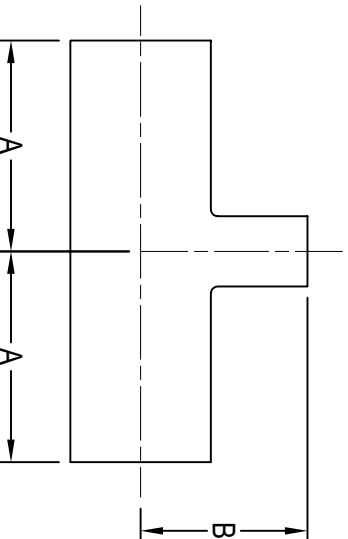


BPE HS-7RWMMW REDUCING TEE



TUBE OD	A	B	Wall Thickness	BPE SS316L Item No.
3/4" x 1/2"	2.000	2.000	0.065	0.75" x 0.50" HS-7RWMMW-B-7
1" x 1/2"	2.125	2.125	0.065	1.00" x 0.50" HS-7RWMMW-B-7
1" x 3/4"	2.125	2.125	0.065	1.00" x 0.75" HS-7RWMMW-B-7
1 1/2" x 1/2"	2.375	2.375	0.065	1.50" x 0.50" HS-7RWMMW-B-7
1 1/2" x 3/4"	2.375	2.375	0.065	1.50" x 0.75" HS-7RWMMW-B-7
1 1/2" x 1"	2.375	2.375	0.065	1.50" x 1.00" HS-7RWMMW-B-7
2" x 1/2"	2.875	2.625	0.065	2.00" x 0.50" HS-7RWMMW-B-7
2" x 3/4"	2.875	2.625	0.065	2.00" x 0.75" HS-7RWMMW-B-7
2" x 1"	2.875	2.625	0.065	2.00" x 1.00" HS-7RWMMW-B-7
2" x 1 1/2"	2.875	2.625	0.065	2.00" x 1.50" HS-7RWMMW-B-7
2 1/2" x 1/2"	3.125	2.875	0.065	2.50" x 0.50" HS-7RWMMW-B-7
2 1/2" x 3/4"	3.125	2.875	0.065	2.50" x 0.75" HS-7RWMMW-B-7
2 1/2" x 1"	3.125	2.875	0.065	2.50" x 1.00" HS-7RWMMW-B-7
2 1/2" x 1 1/2"	3.125	2.875	0.065	2.50" x 1.50" HS-7RWMMW-B-7
2 1/2" x 2"	3.125	2.875	0.065	2.50" x 2.00" HS-7RWMMW-B-7
3" x 1/2"	3.375	3.125	0.065	3.00" x 0.50" HS-7RWMMW-B-7
3" x 3/4"	3.375	3.125	0.065	3.00" x 0.75" HS-7RWMMW-B-7
3" x 1"	3.375	3.125	0.065	3.00" x 1.00" HS-7RWMMW-B-7
3" x 1 1/2"	3.375	3.125	0.065	3.00" x 1.50" HS-7RWMMW-B-7
3" x 2"	3.375	3.125	0.065	3.00" x 2.00" HS-7RWMMW-B-7
3" x 2 1/2"	3.375	3.125	0.065	3.00" x 2.50" HS-7RWMMW-B-7
4" x 1/2"	4.125	3.625	0.083 x 0.065	4.00" x 0.50" HS-7RWMMW-B-7
4" x 3/4"	4.125	3.625	0.083 x 0.065	4.00" x 0.75" HS-7RWMMW-B-7
4" x 1"	4.125	3.625	0.083 x 0.065	4.00" x 1.00" HS-7RWMMW-B-7
4" x 1 1/2"	4.125	3.625	0.083 x 0.065	4.00" x 1.50" HS-7RWMMW-B-7
4" x 2"	4.125	3.875	0.083 x 0.065	4.00" x 2.00" HS-7RWMMW-B-7
4" x 2 1/2"	4.125	3.875	0.083 x 0.065	4.00" x 2.50" HS-7RWMMW-B-7
4" x 3"	4.125	3.875	0.083 x 0.065	4.00" x 3.00" HS-7RWMMW-B-7
6" x 3"	5.625	4.875	0.109 x 0.065	6.00" x 3.00" HS-7RWMMW-B-7
6" x 4"	5.625	5.125	0.109 x 0.083	6.00" x 4.00" HS-7RWMMW-B-7

All dimensions in inches.

JUNE 2021



www.halesoninc.com