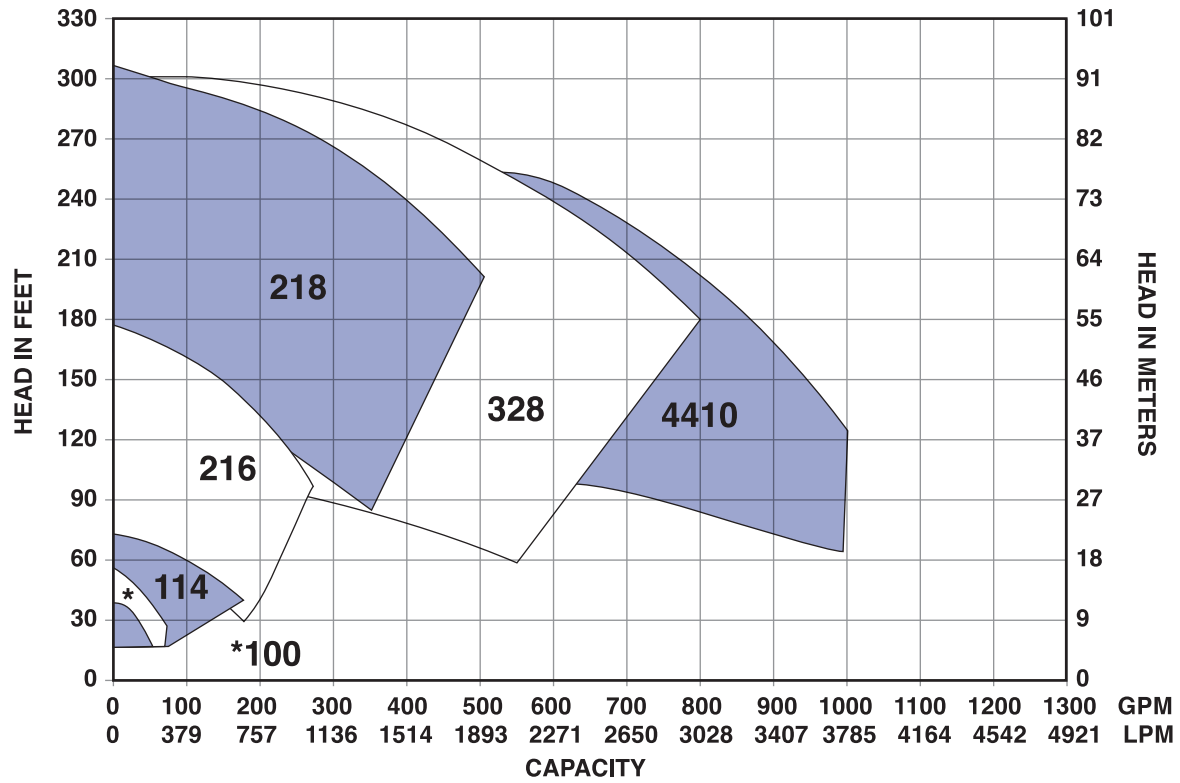


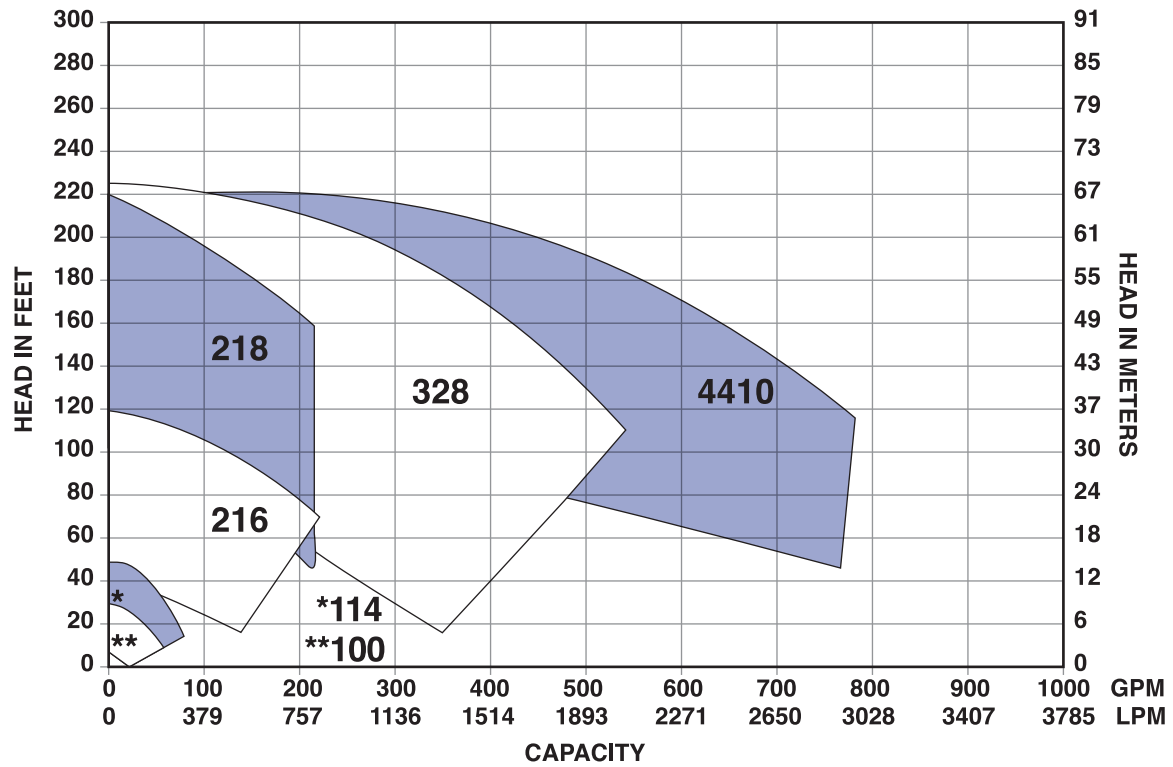


# COMPOSITE CURVES

## QC 3500 RPM



## QC 2900 RPM

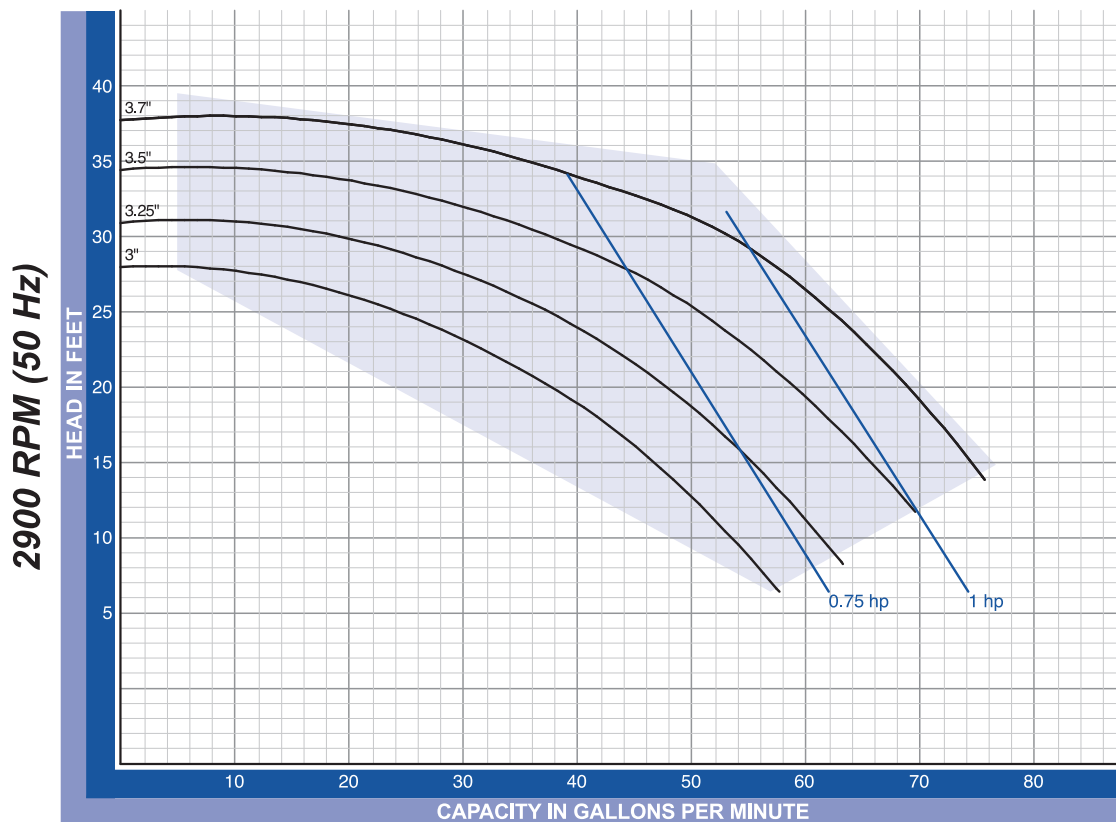
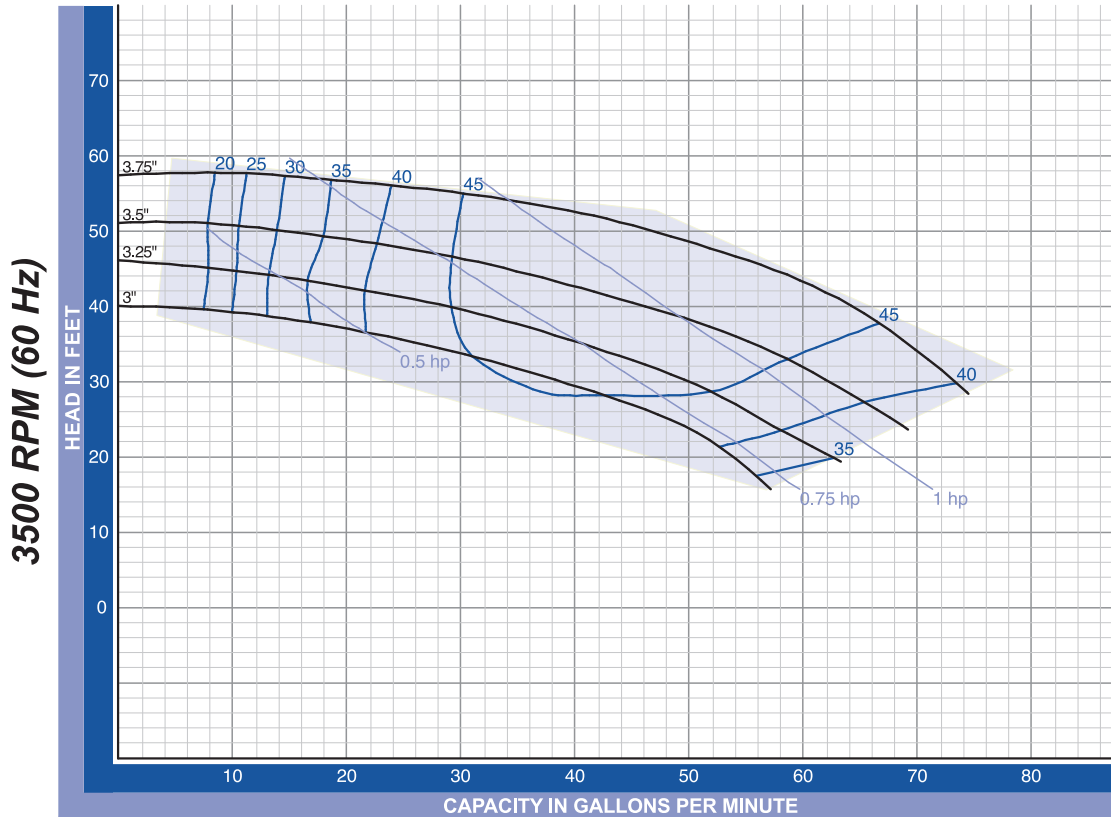


# QC 100 1.5" x 1.0" Standard Inlet



QC -100 Inlet 1 1/2" x Outlet 1". The curves are based testing water at 70° F and have a tolerance of ±5% applicable to all of them. For different operation conditions please contact us.

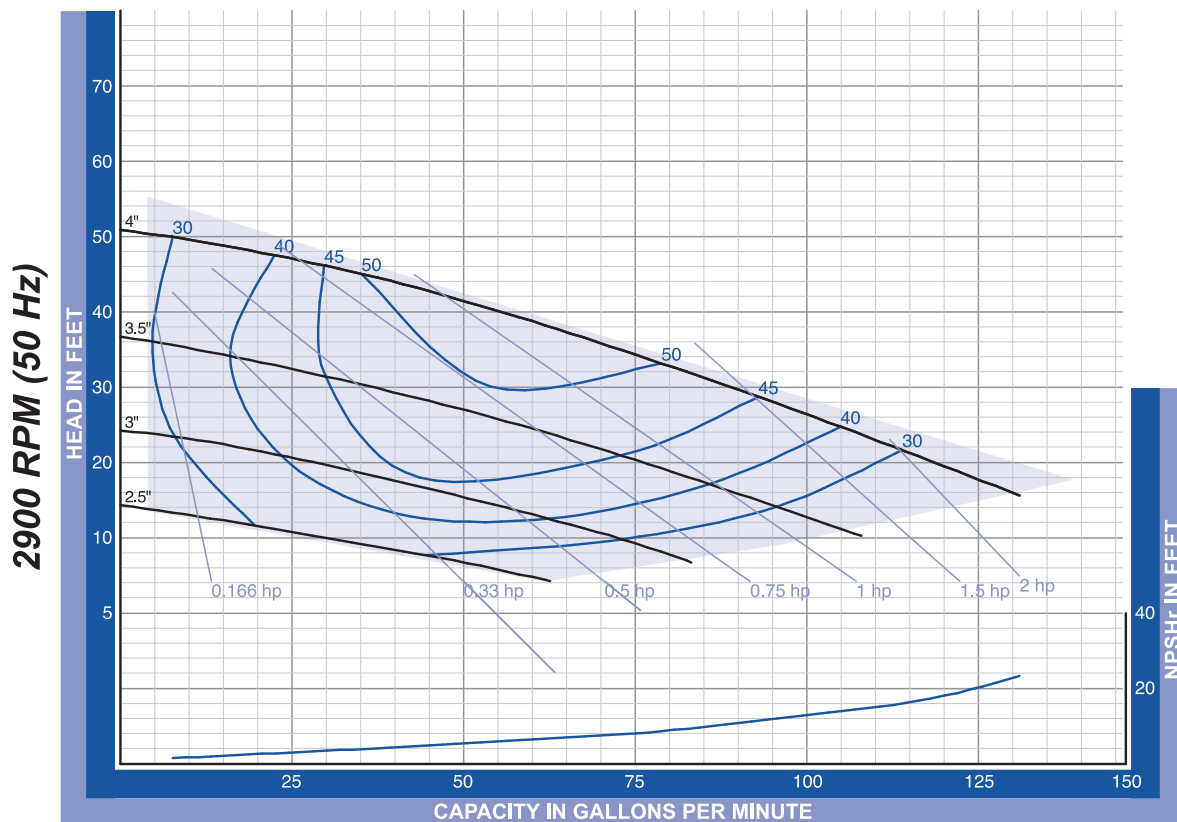
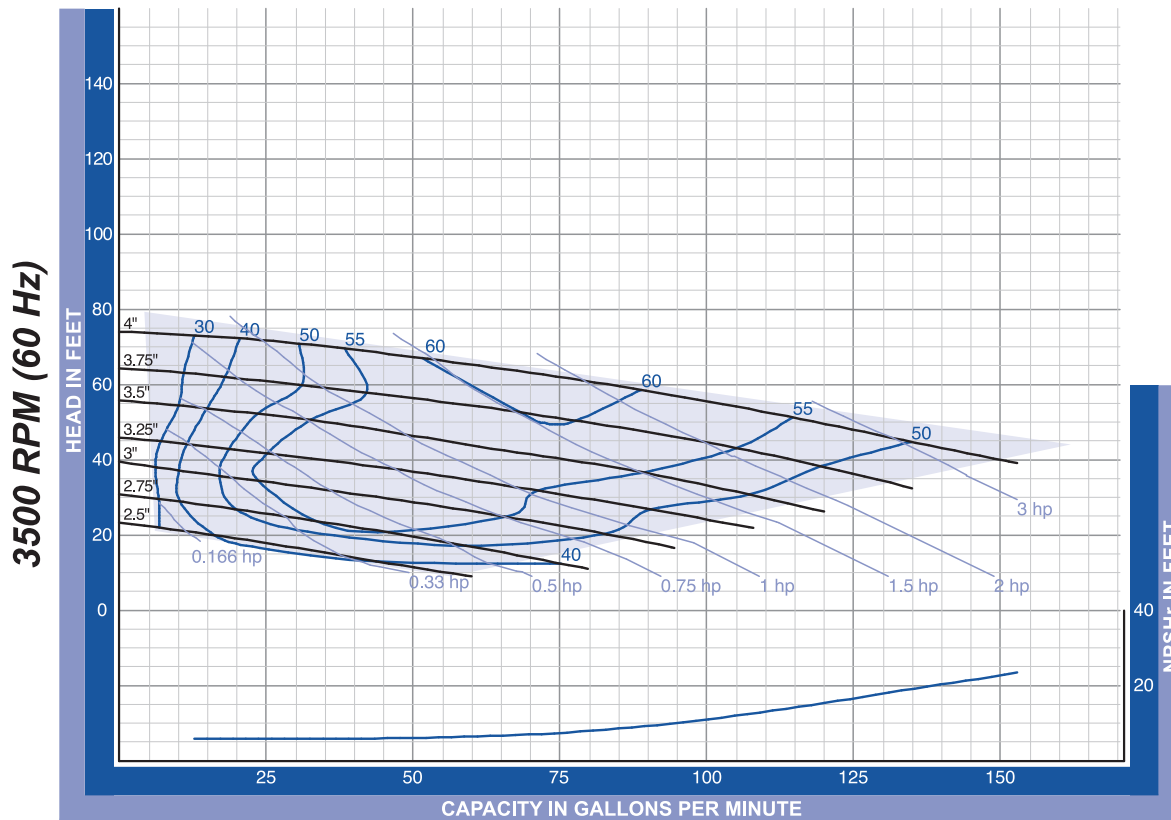
The impeller diameter is in inches.





# QC 114 1.5" x 1.5" Standard Inlet

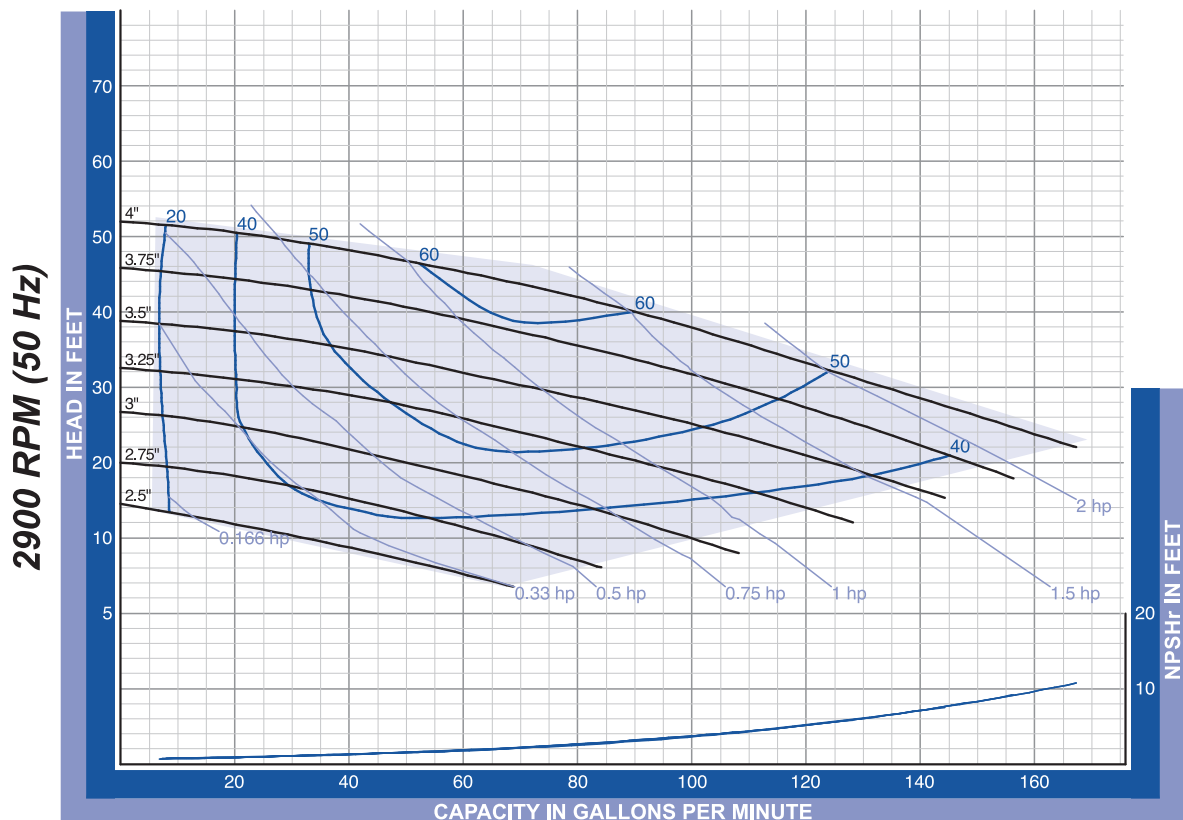
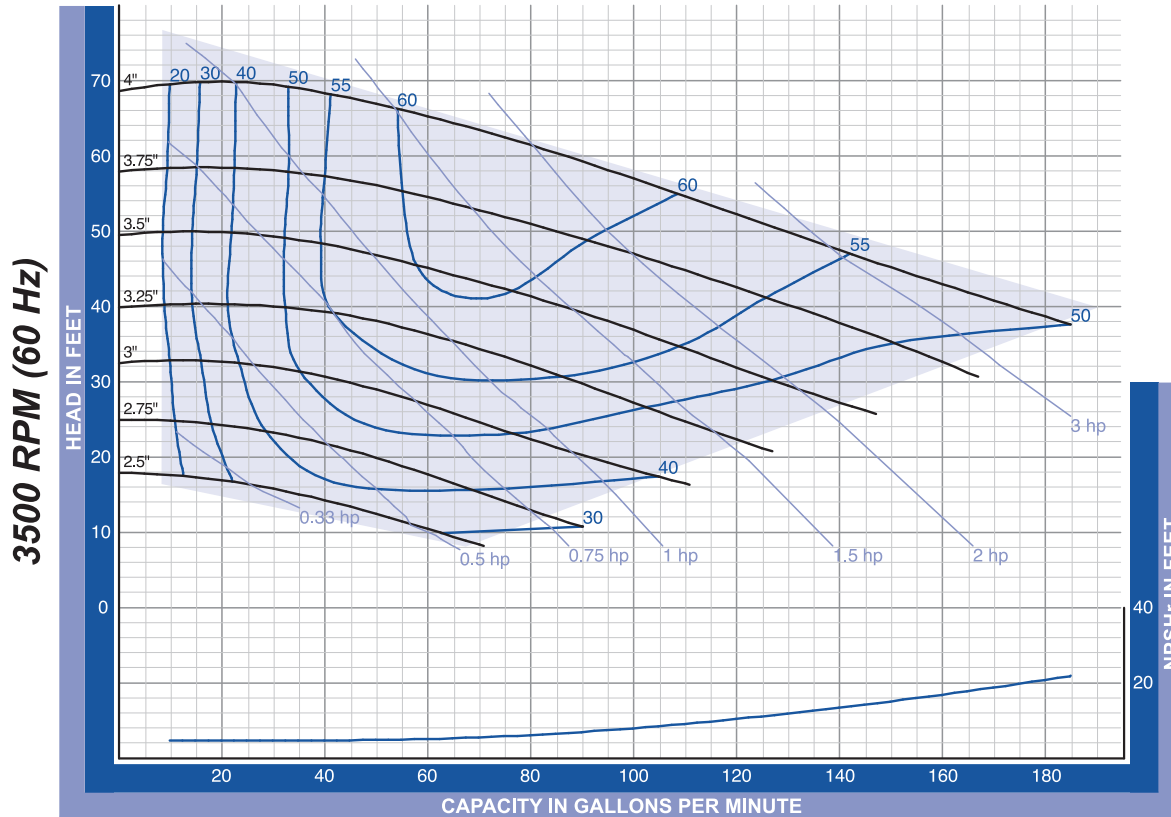
QC -114 Inlet 1 1/2" x Outlet 1 1/2". The curves are based testing water at 70° F and have a tolerance of ±5% applicable to all of them. For different operation conditions please contact us. The impeller diameter is in inches.





## QC 114 2.0" x 1.5" Enlarged Inlet

QC -114 Inlet 2" x Outlet 1/2". The curves are based testing water at 70° F and have a tolerance of ±5% applicable to all of them. For different operation conditions please contact us. The impeller diameter is in inches.

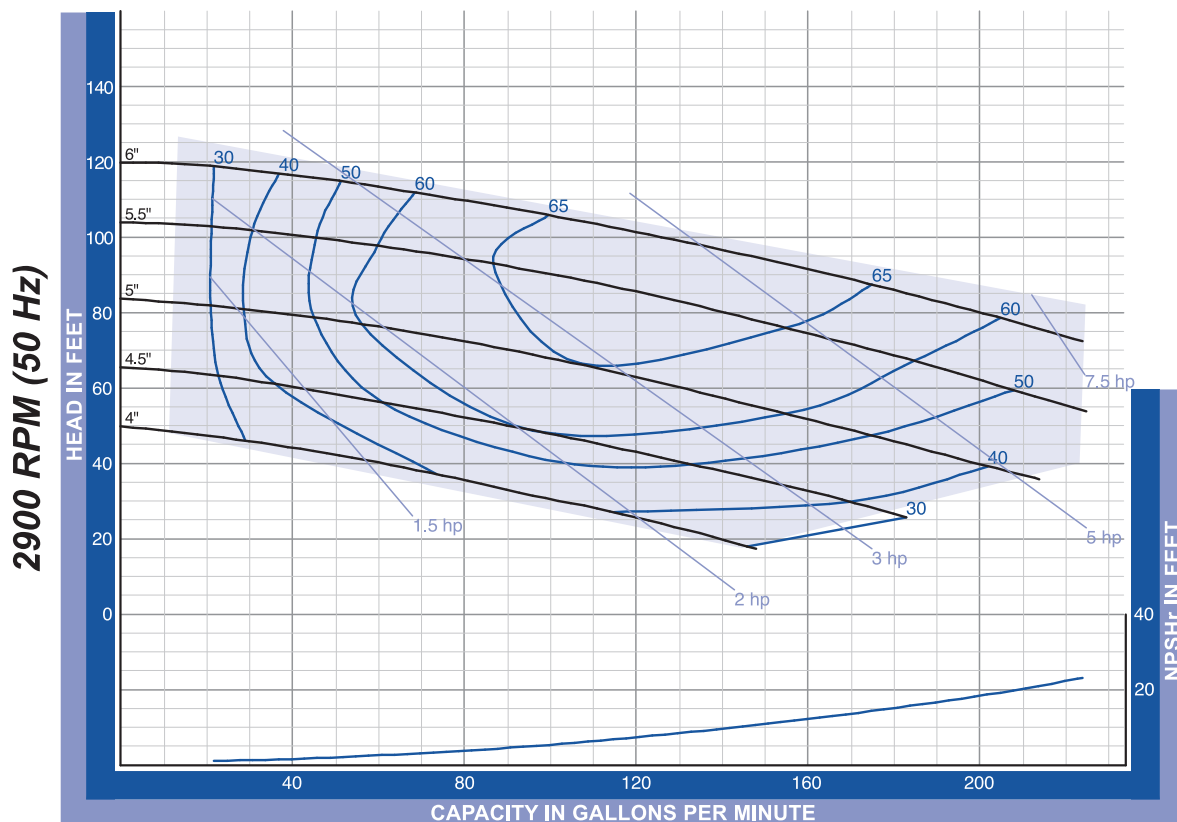
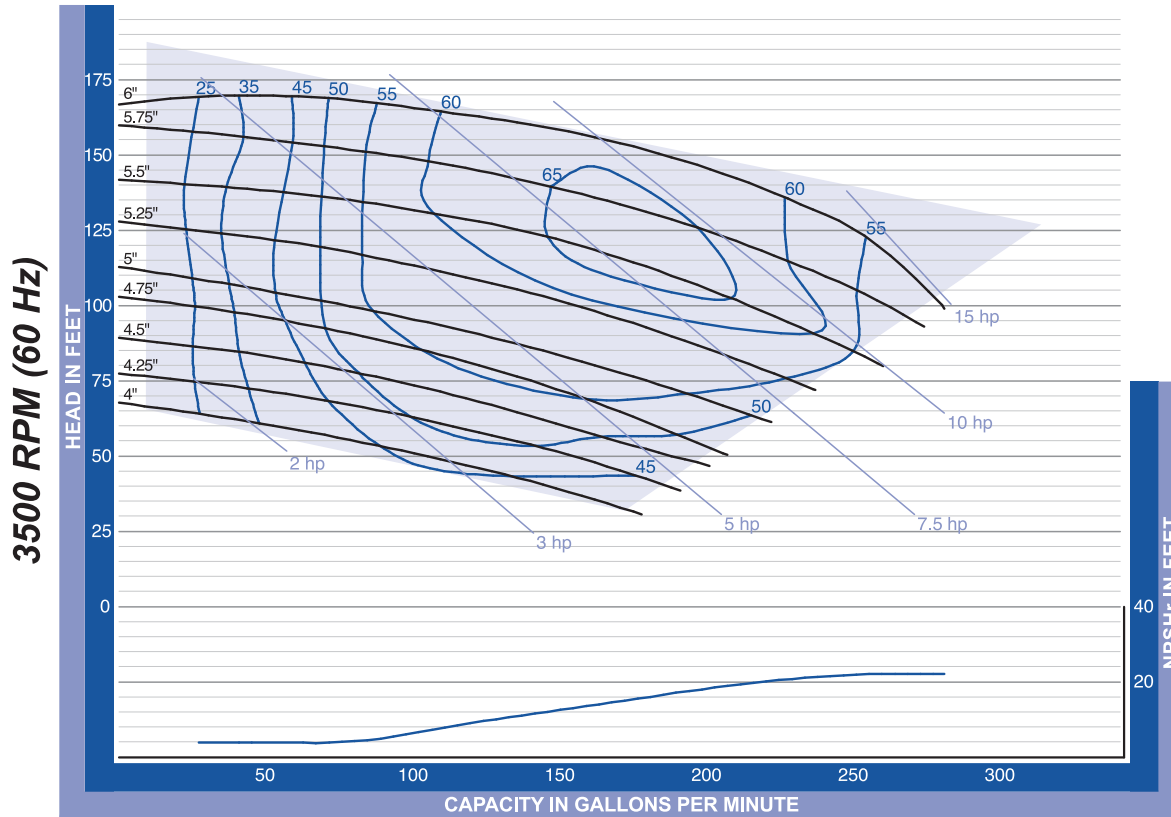






# QC 216 2.0" x 1.5" Standard Inlet

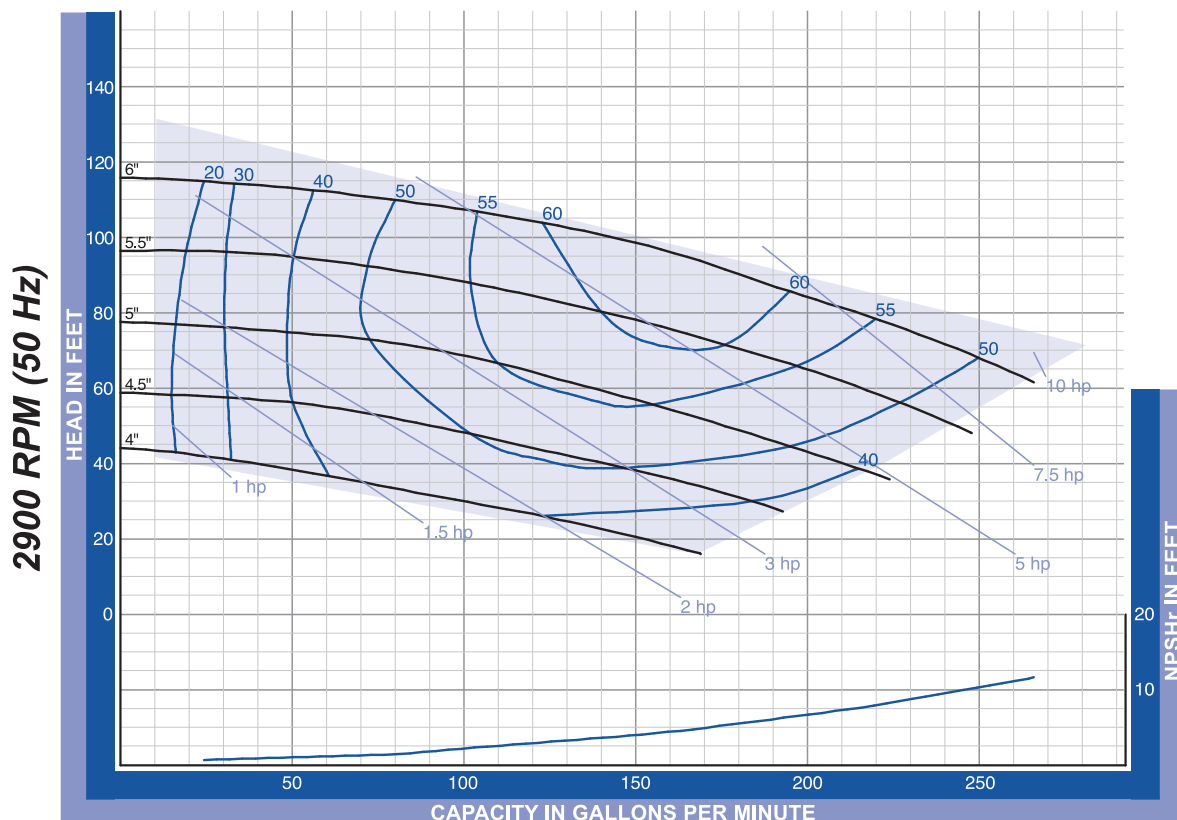
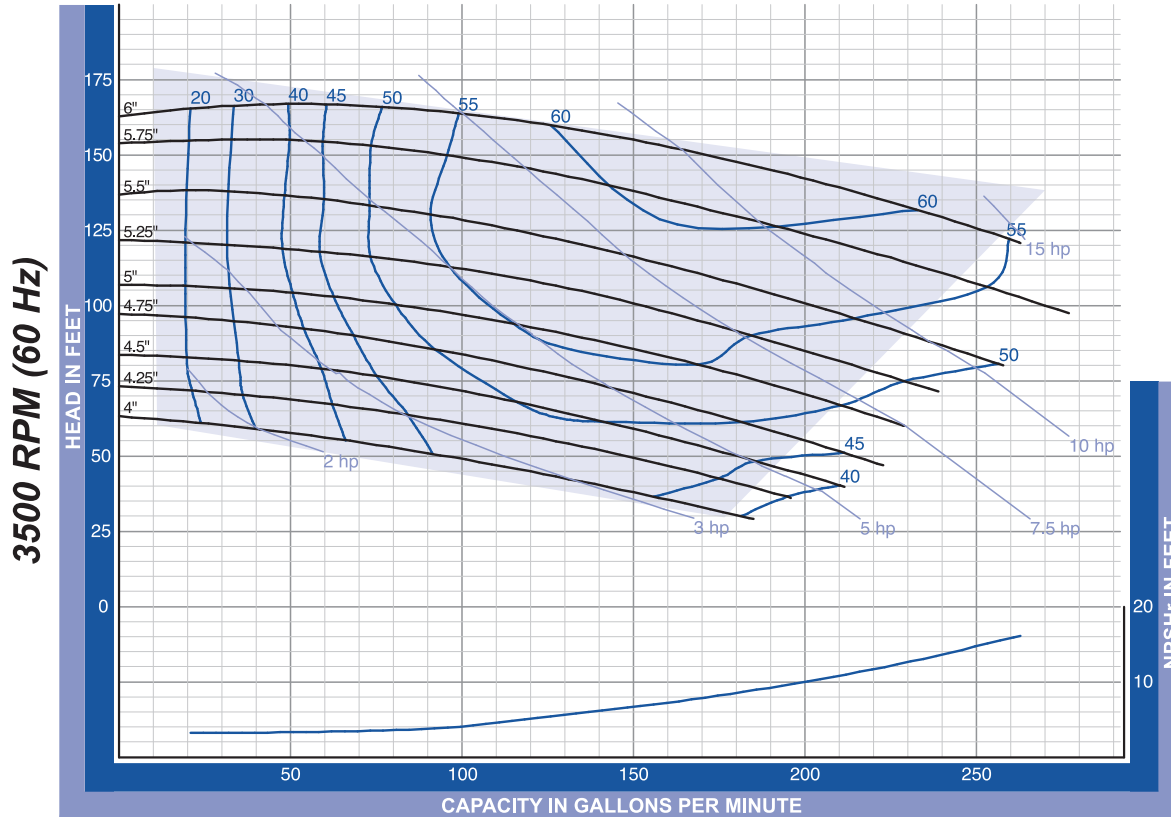
QC -216 Inlet 2" x Outlet 1 1/2". The curves are based testing water at 70° F and have a tolerance of ±5% applicable to all of them. For different operation conditions please contact us. The impeller diameter is in inches.





# QC 216 2.5" x 1.5" Enlarged Inlet

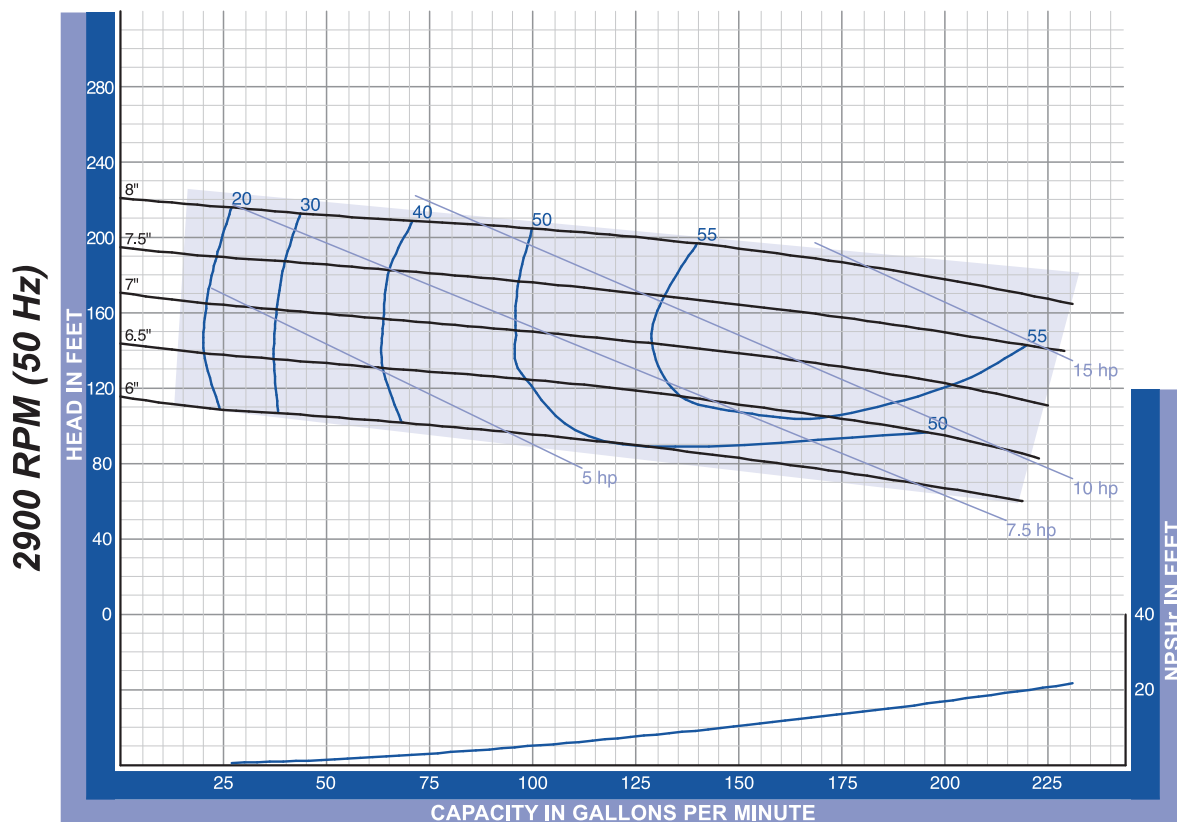
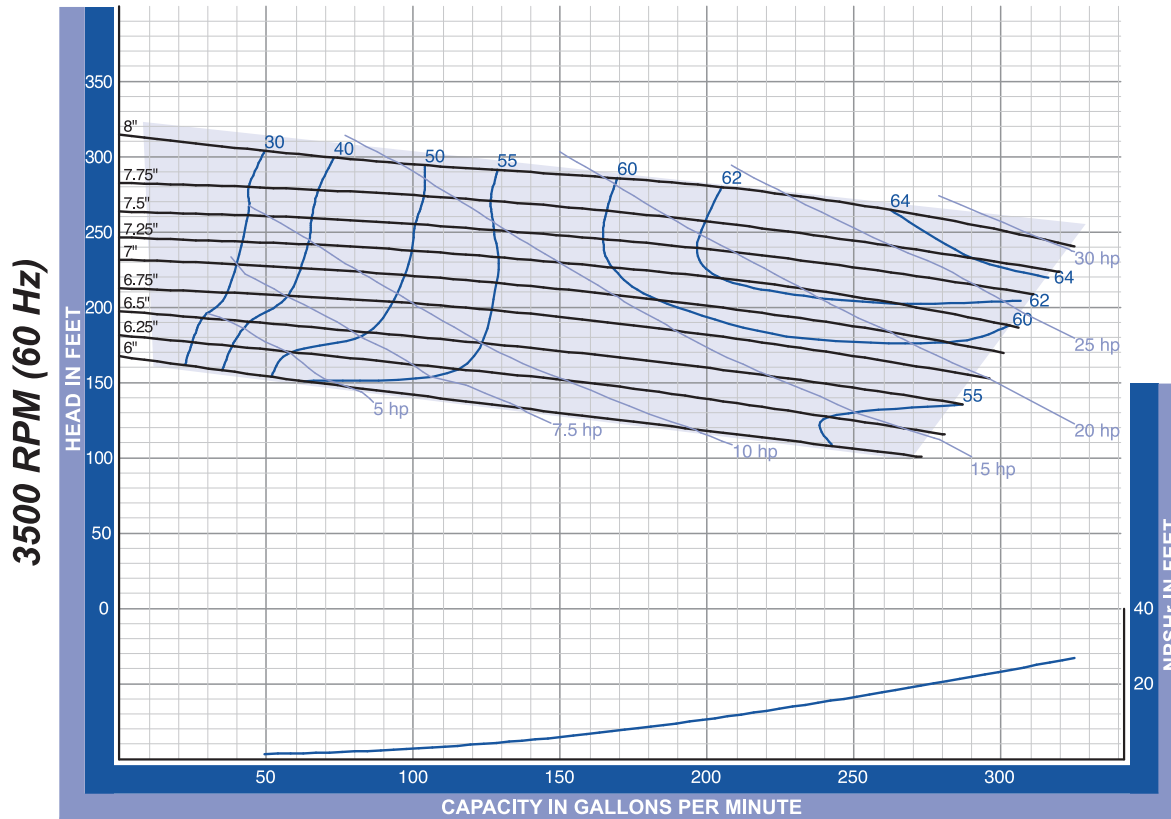
QC - 216 Inlet 2 1/2" x Outlet 1 1/2". The curves are based testing water at 70° F and have a tolerance of ±5% applicable to all of them. For different operation conditions please contact us. The impeller diameter is in inches.





# QC 218 2.0" x 1.5" Standard Inlet

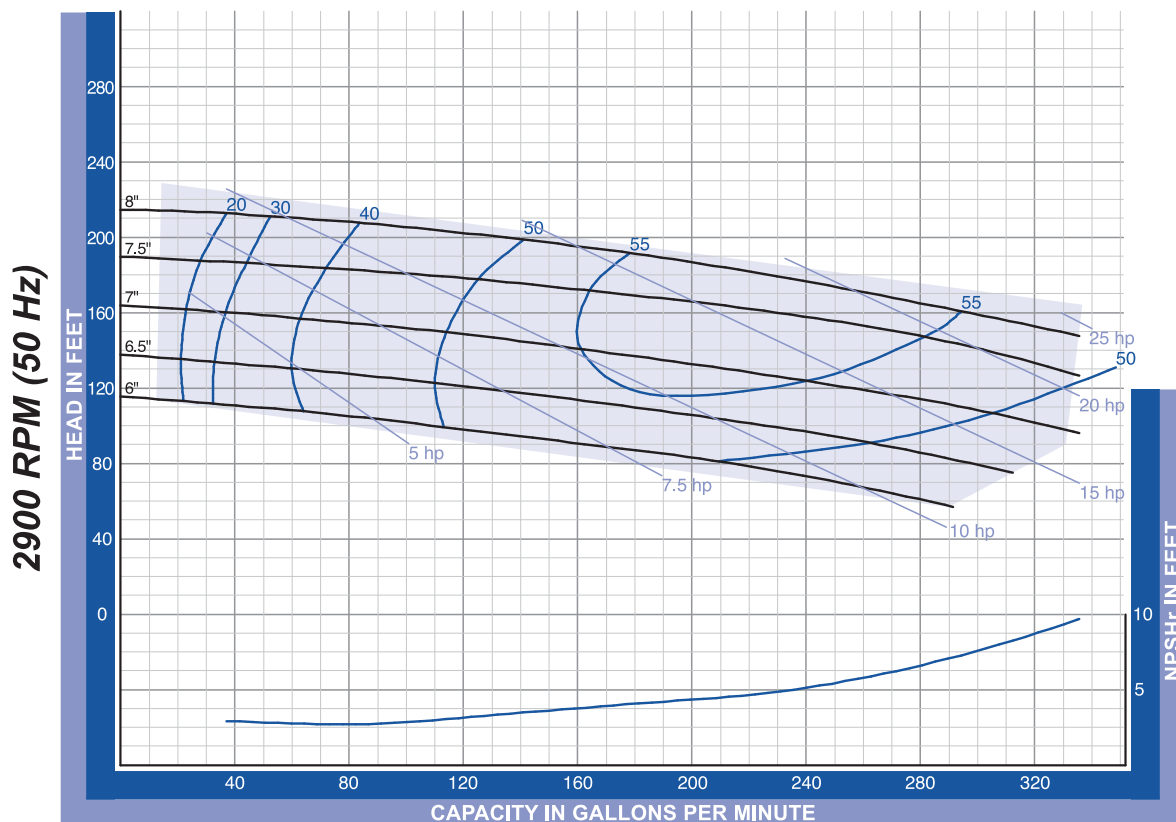
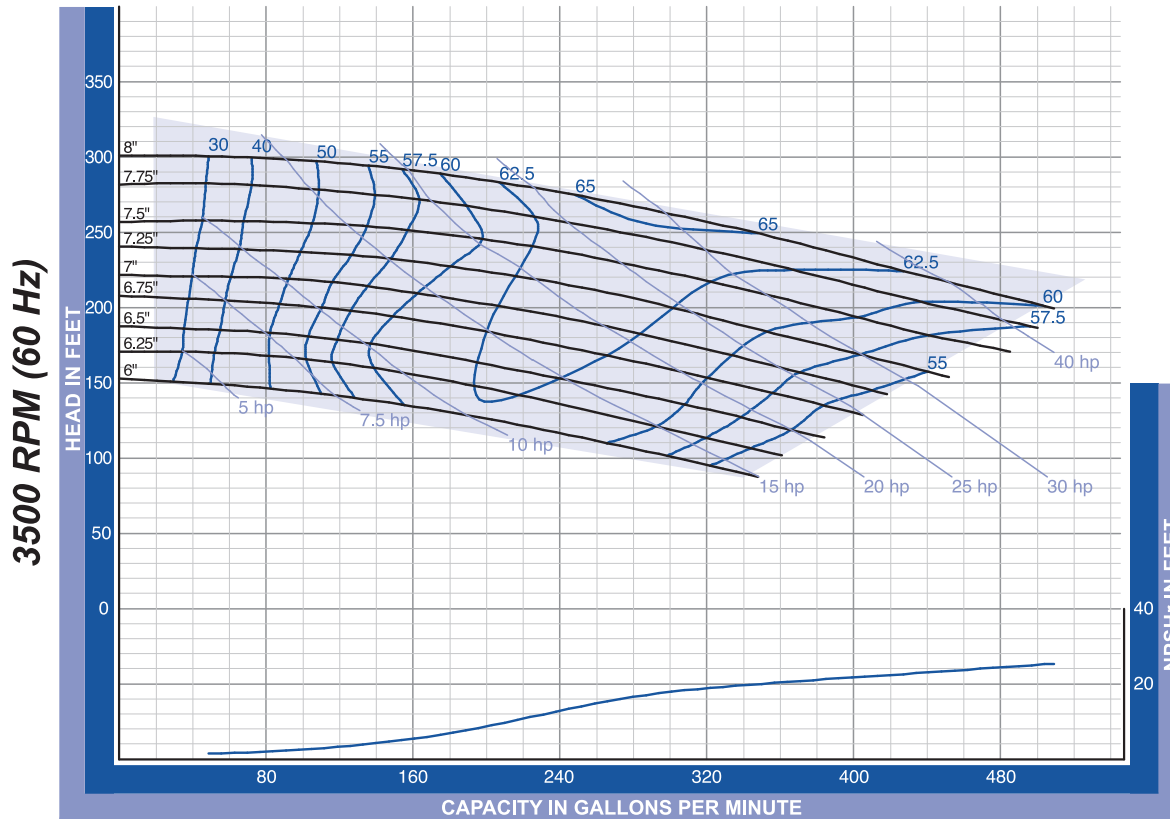
QC - 218 Inlet 2" x Outlet 1 1/2". The curves are based testing water at 70° F and have a tolerance of ±5% applicable to all of them. For different operation conditions please contact us. The impeller diameter is in inches.





## QC 218 3.0" x 1.5" Enlarged Inlet

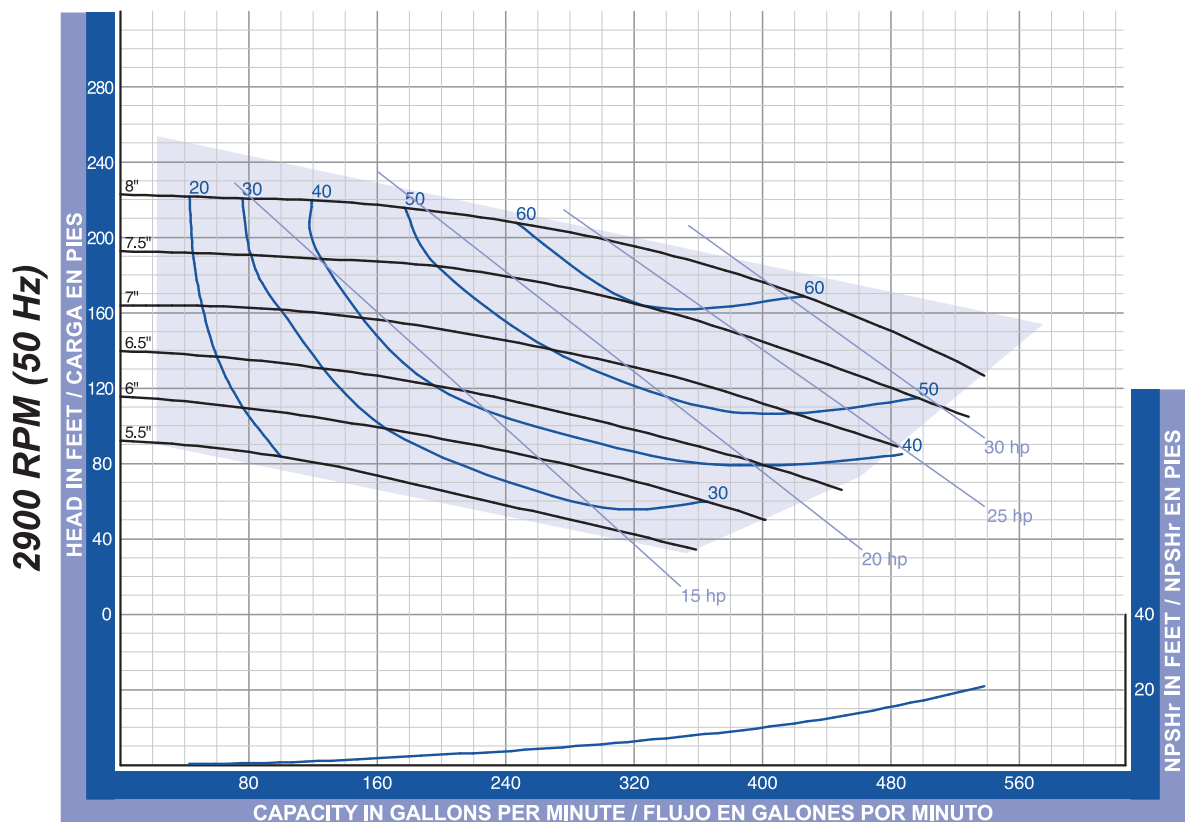
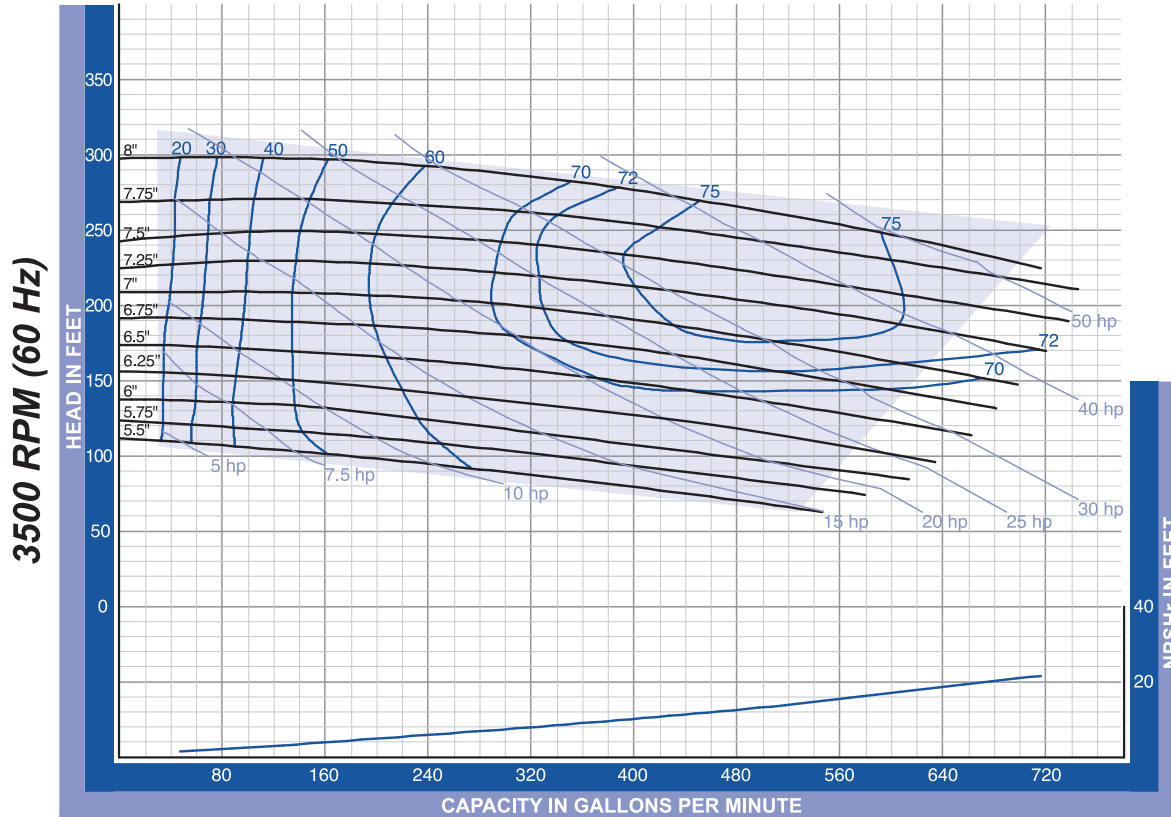
QC- 218 Inlet 3" x Outlet 1 1/2". The curves are based testing water at 70° F and have a tolerance of  $\pm 5\%$  applicable to all of them. For different operation conditions please contact us. The impeller diameter is in inches.





## QC 328 3.0" x 2.0" Standard Inlet

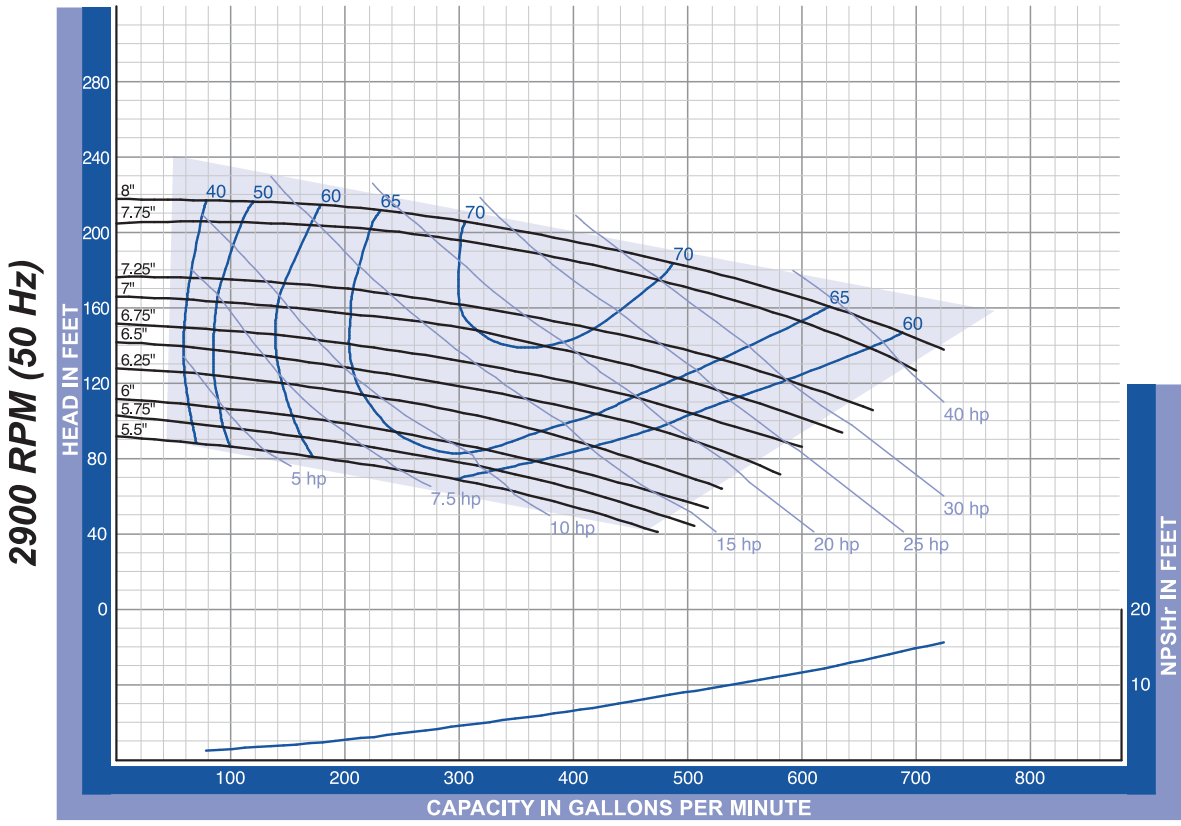
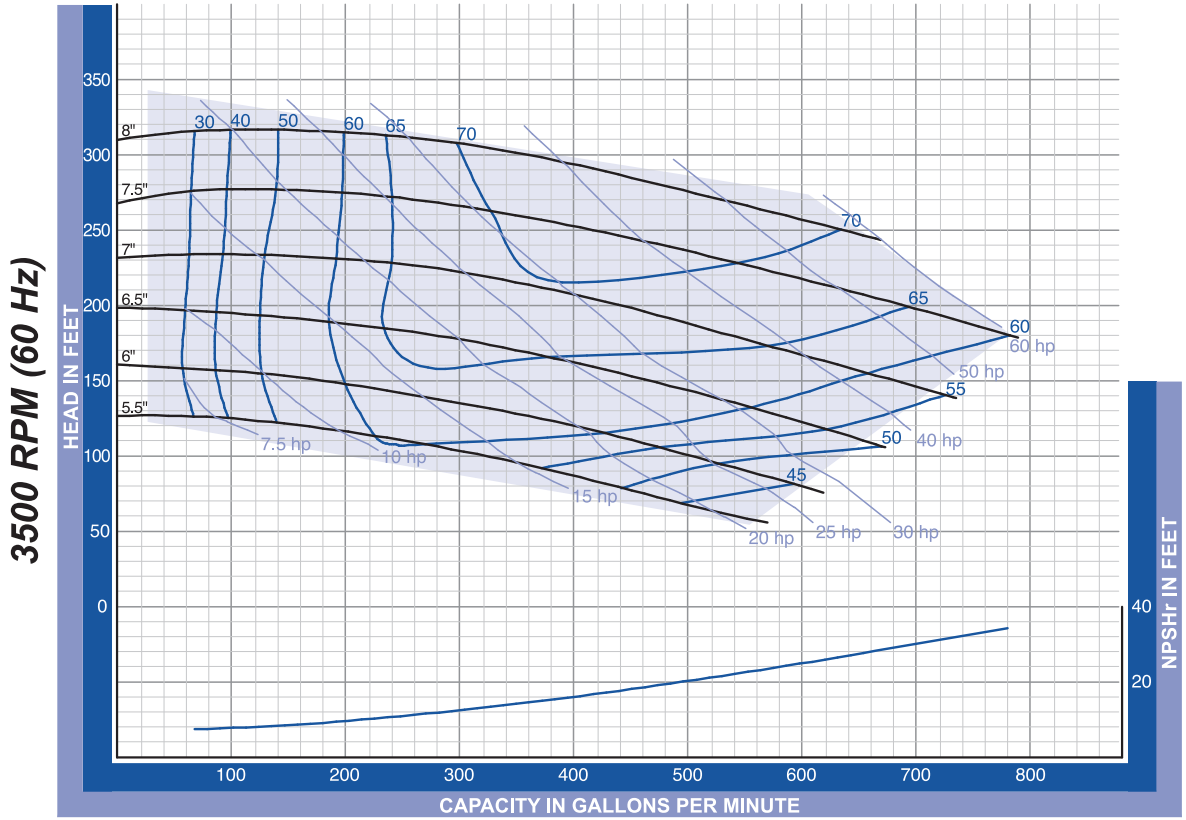
QC - 328 Inlet 3" x Outlet 2". The curves are based testing water at 70° F and have a tolerance of  $\pm 5\%$  applicable to all of them. For different operation conditions please contact us. The impeller diameter is in inches.





# QC 328 4.0" x 2.0" Enlarged Inlet

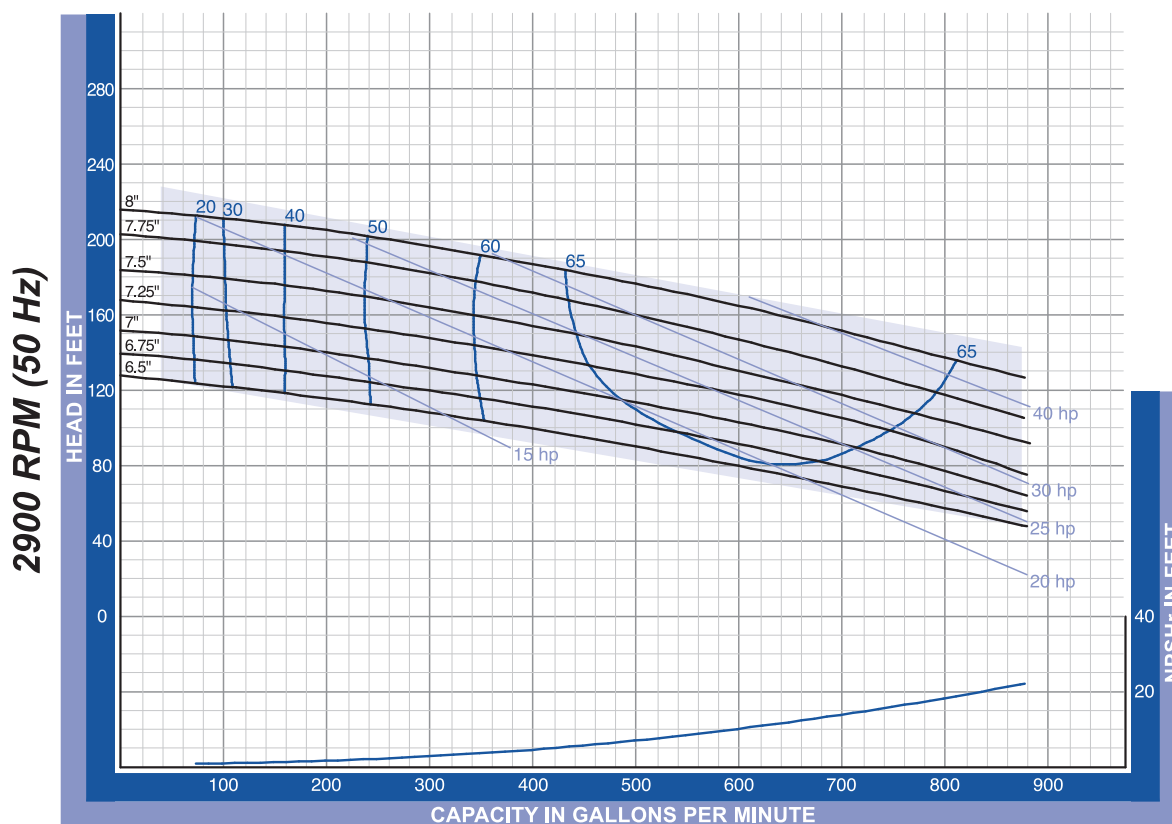
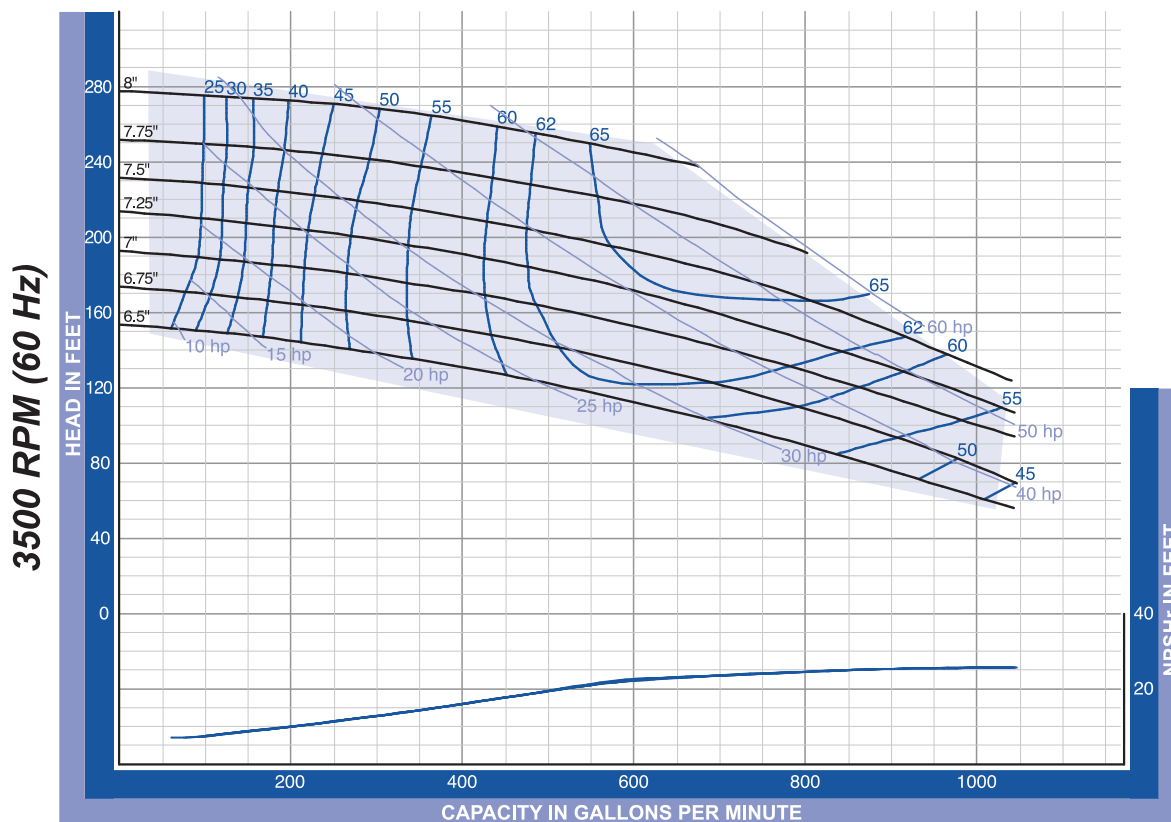
QC - 328 Inlet 4" x Outlet 2". The curves are based testing water at 70° F and have a tolerance of ±5% applicable to all of them. For different operation conditions please contact us. The impeller diameter is in inches.





## QC 4410 4.0" x 4.0" Standard Inlet

QC - 4410 Inlet 4" x Outlet 4". The curves are based testing water at 70° F and have a tolerance of  $\pm 5\%$  applicable to all of them. For different operation conditions please contact us. The impeller diameter is in inches.

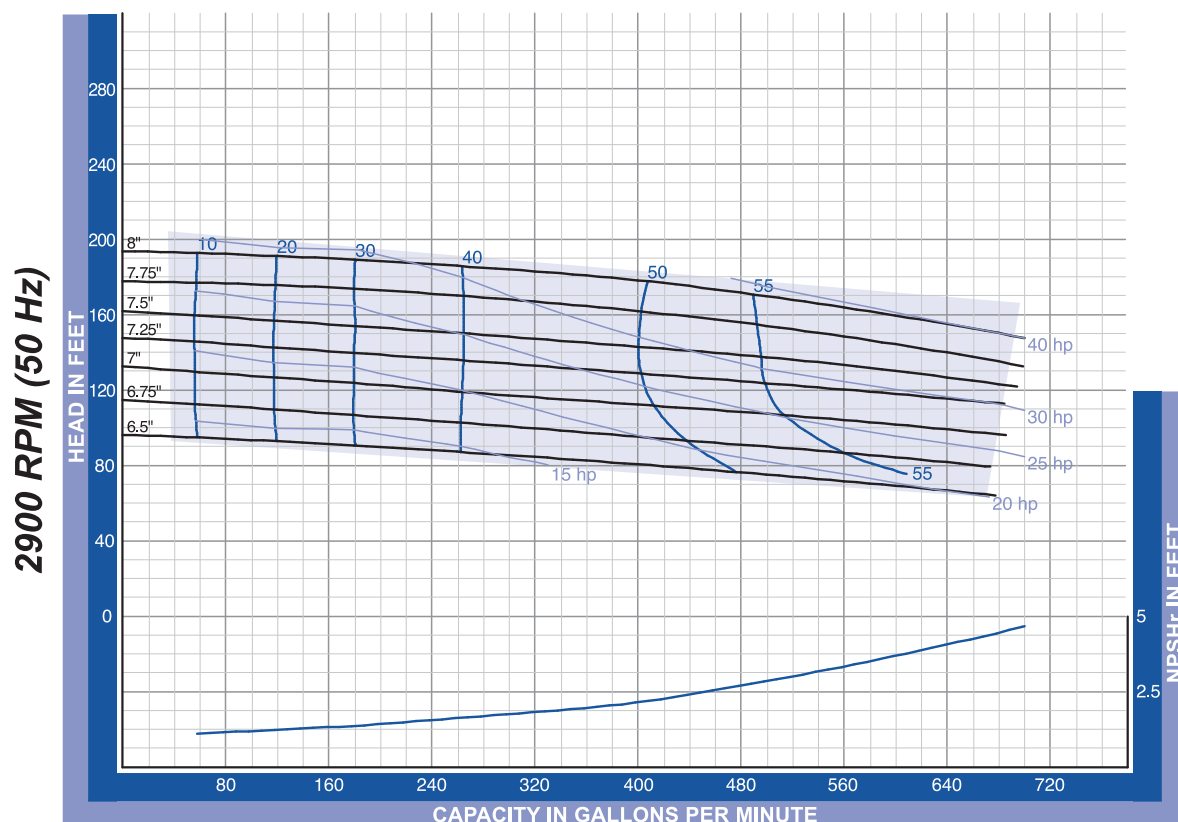
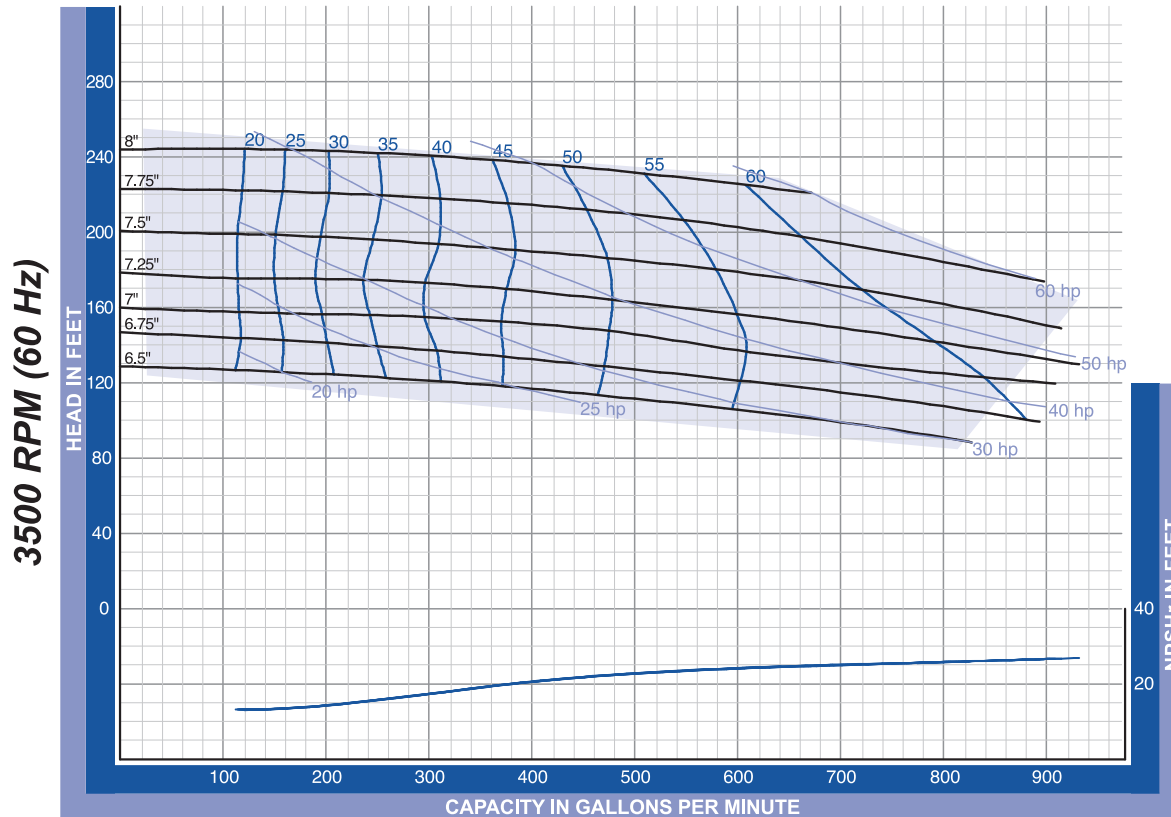






## QC 4410 6.0" x 4.0" Enlarged Inlet

QC- 4410 Inlet 6" x Outlet 4". The curves are based testing water at 70° F and have a tolerance of  $\pm 5\%$  applicable to all of them. For different operation conditions please contact us. The impeller diameter is in inches.

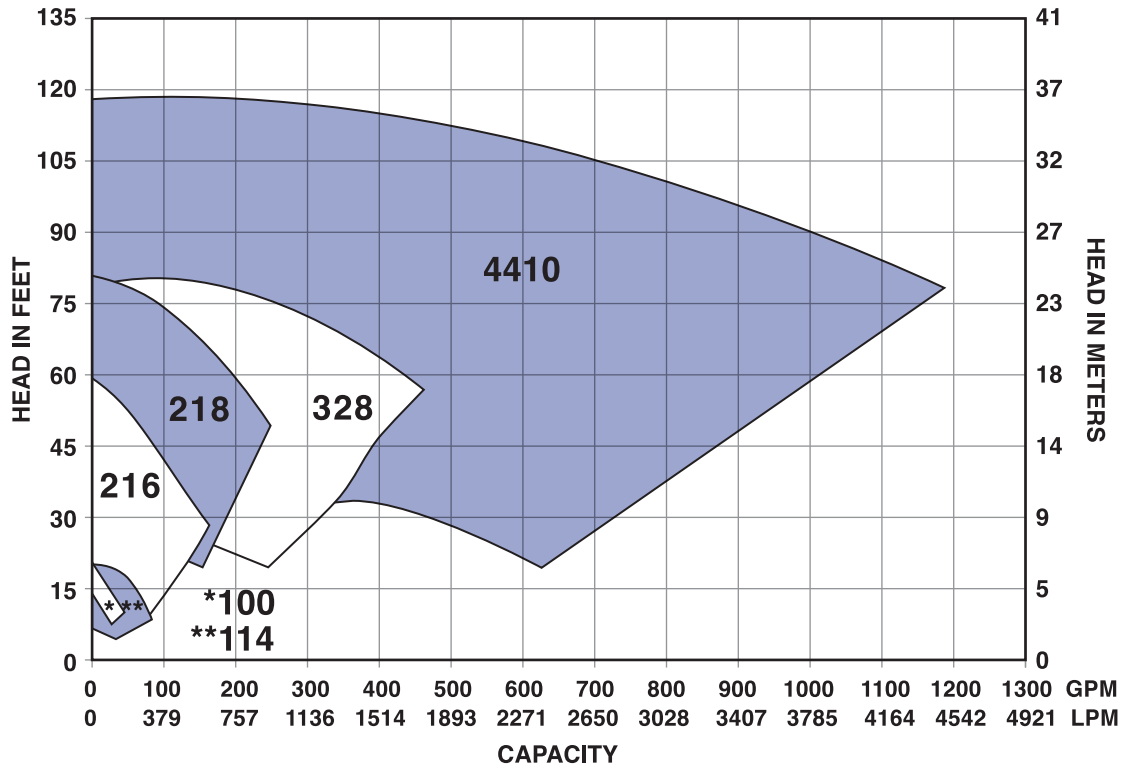




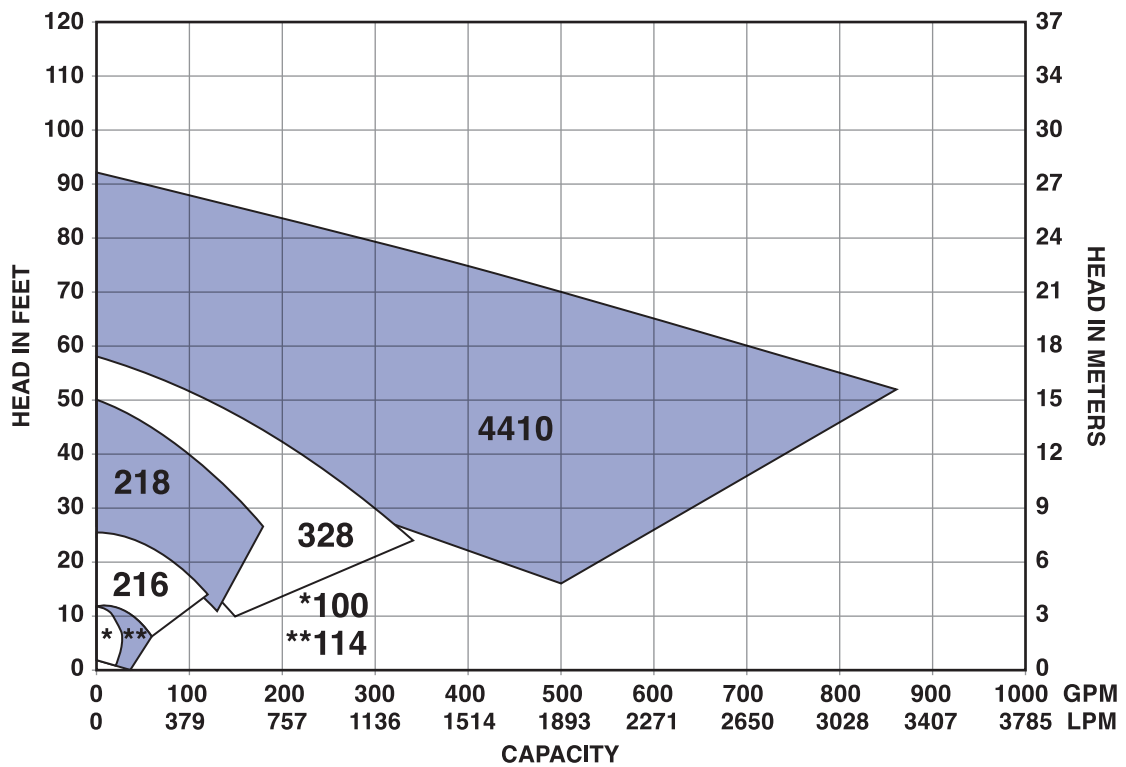


# COMPOSITE CURVES

## QC 1750 RPM



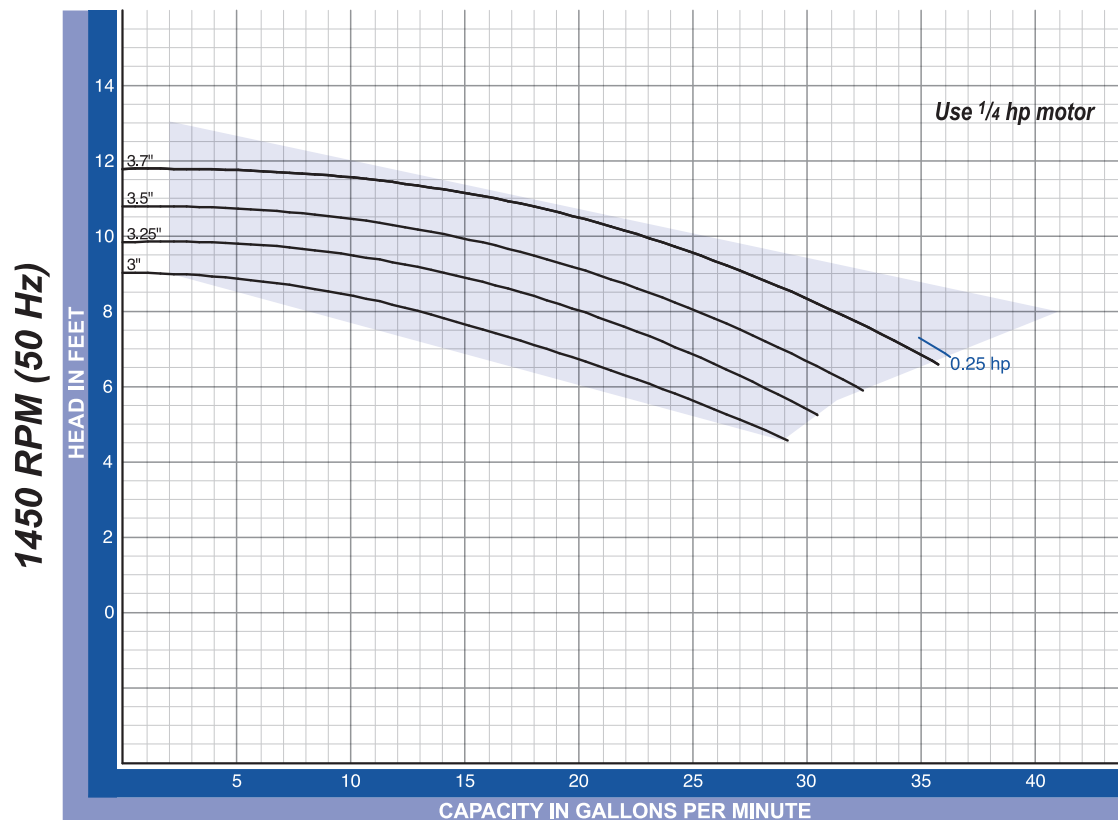
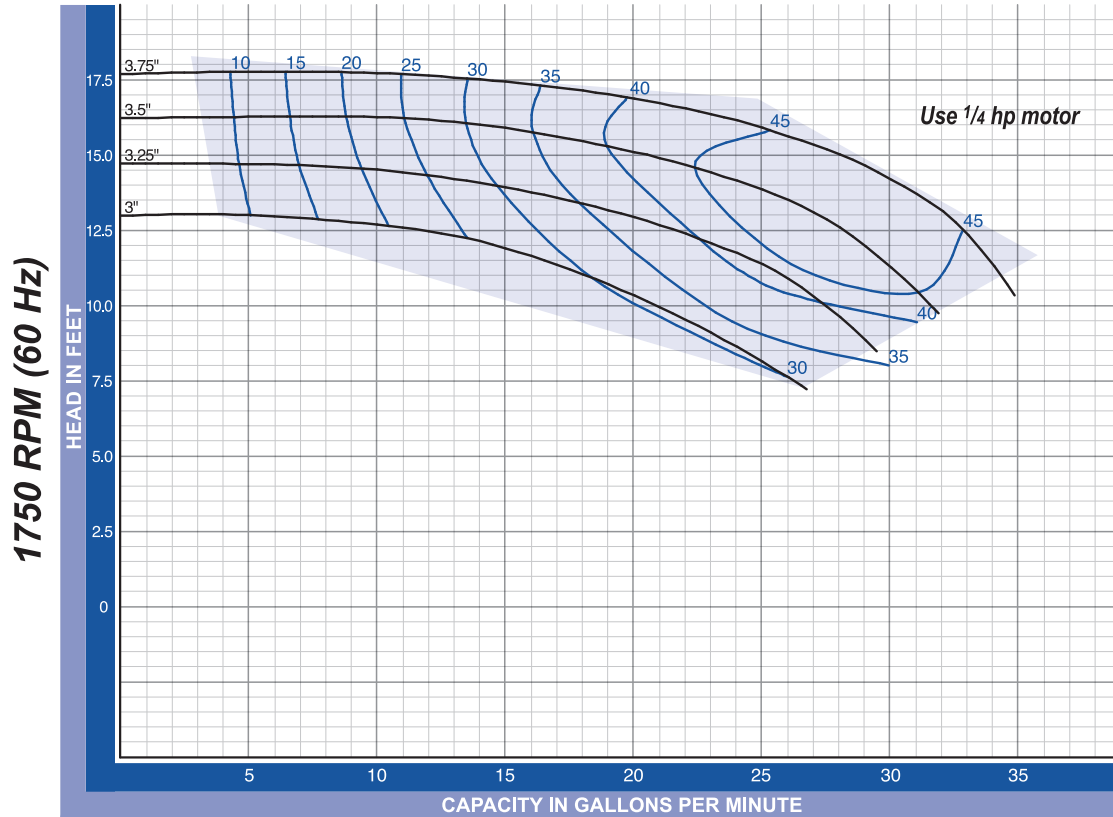
## QC 1450 RPM





## QC 100 1.5" x 1.0" Standard Inlet

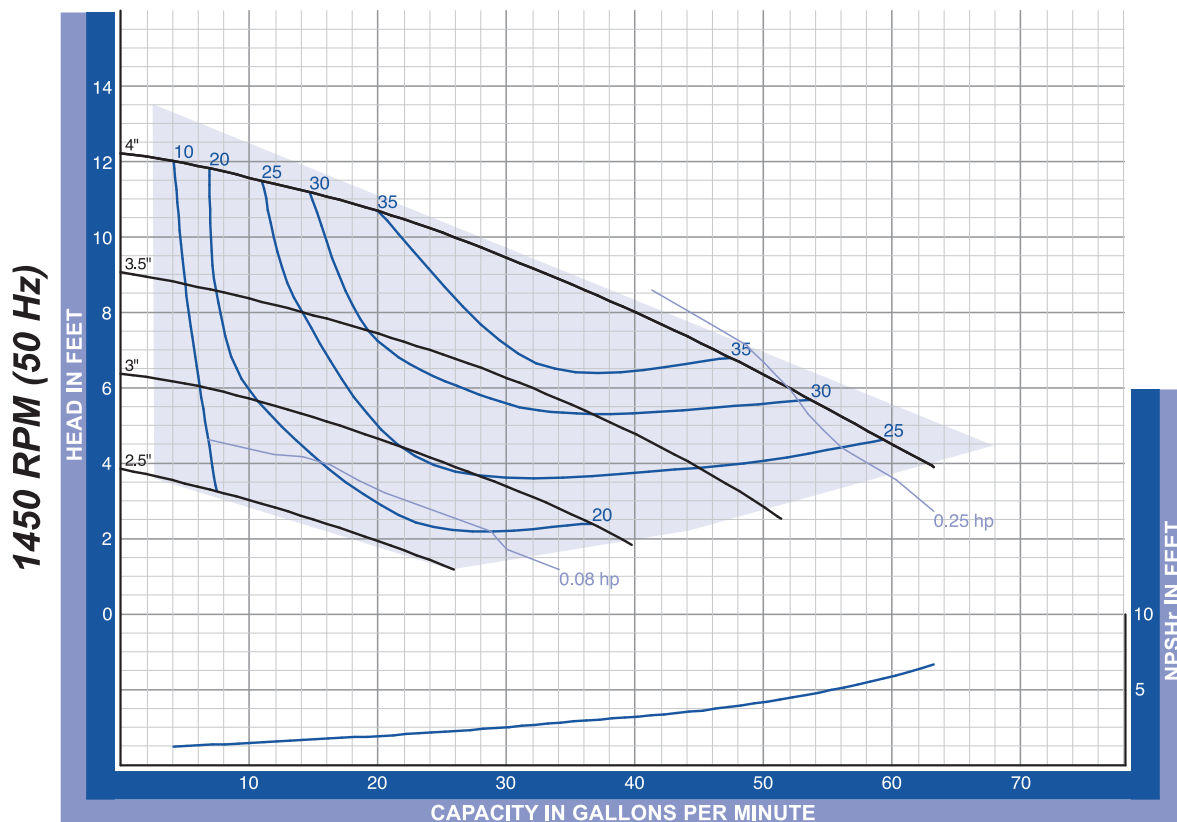
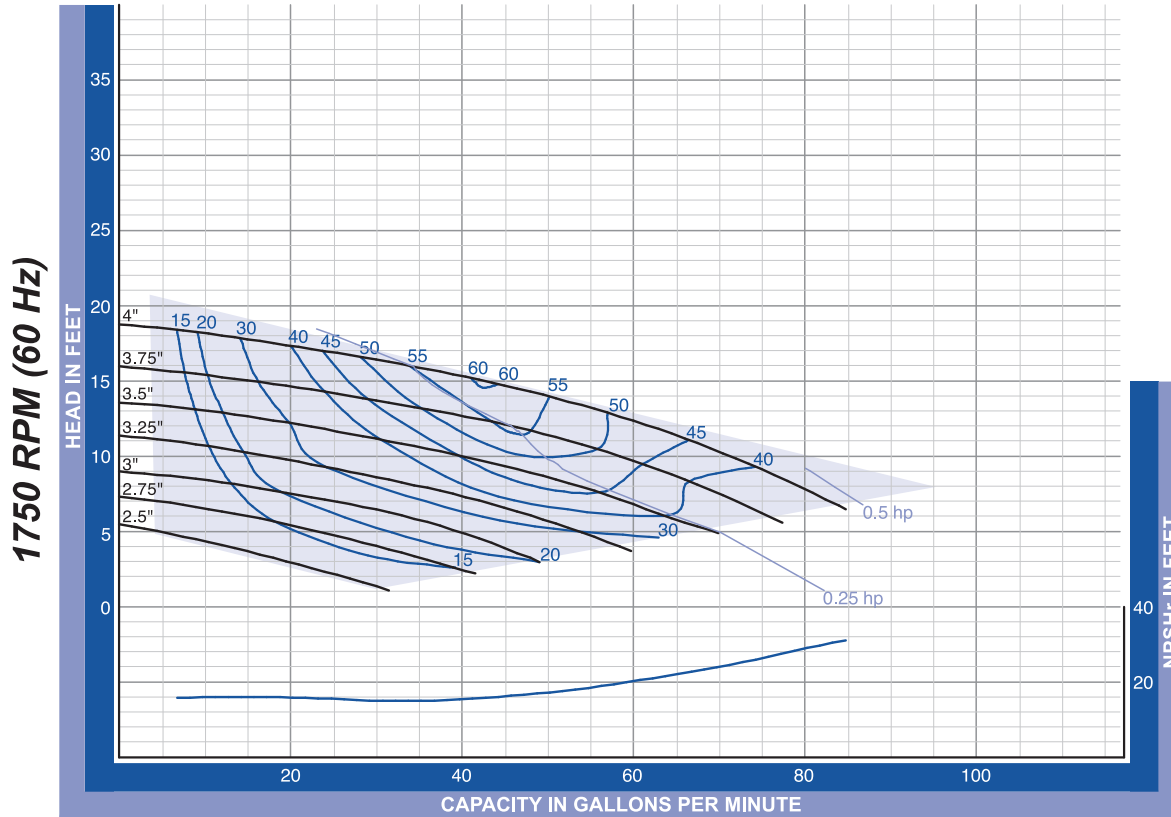
QC - 100 Inlet 1 1/2" x Outlet 1". The curves are based testing water at 70° F and have a tolerance of  $\pm 5\%$  applicable to all of them. For different operation conditions please contact us. The impeller diameter is in inches.





## QC 114 1.5" x 1.5" Standard Inlet

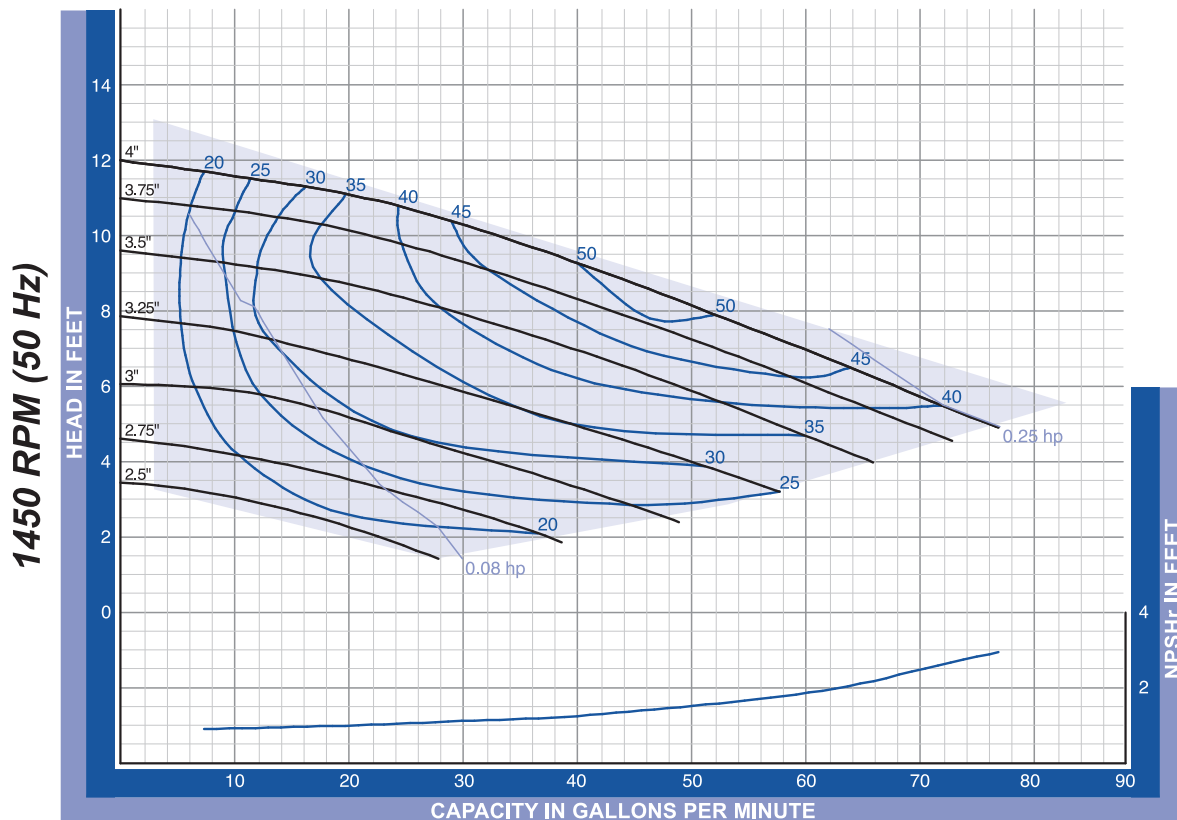
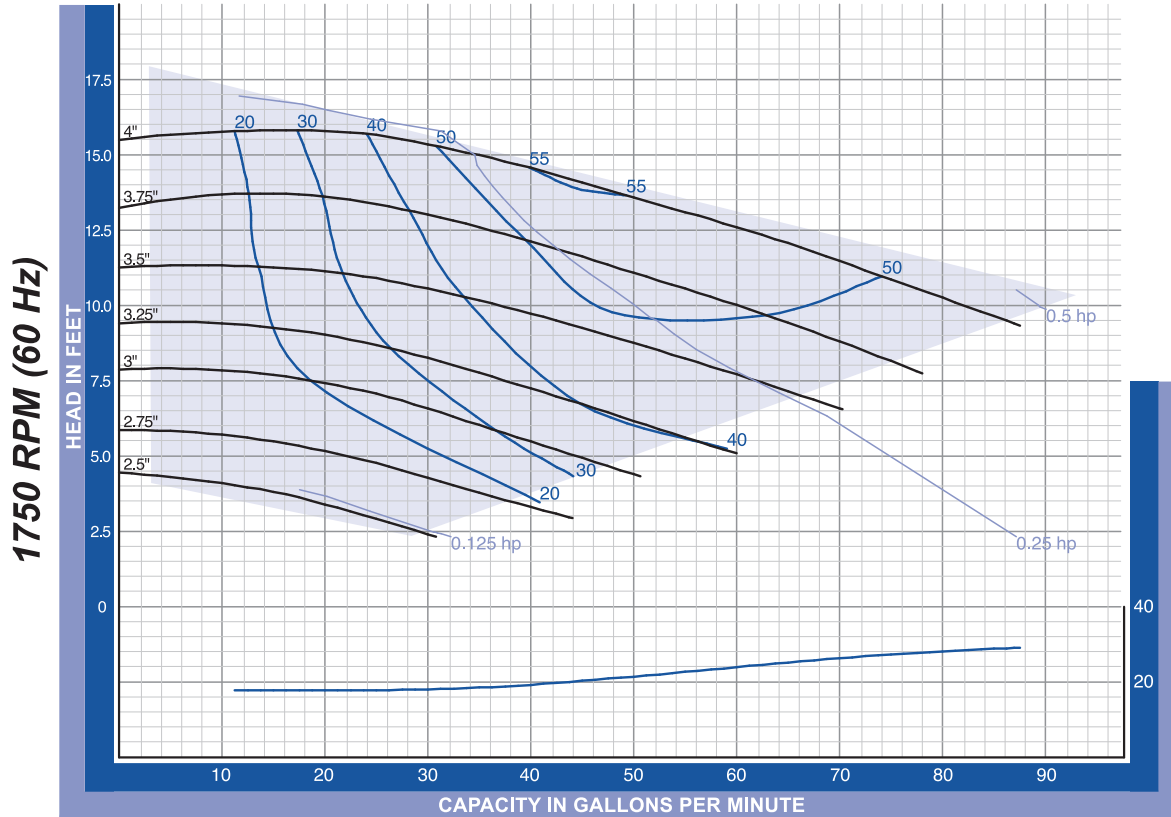
QC - 114 Inlet 1 1/2" x Outlet 1 1/2". The curves are based testing water at 70° F and have a tolerance of ±5% applicable to all of them. For different operation conditions please contact us. The impeller diameter is in inches.





## QC 114 2.0" x 1.5" Enlarged Inlet

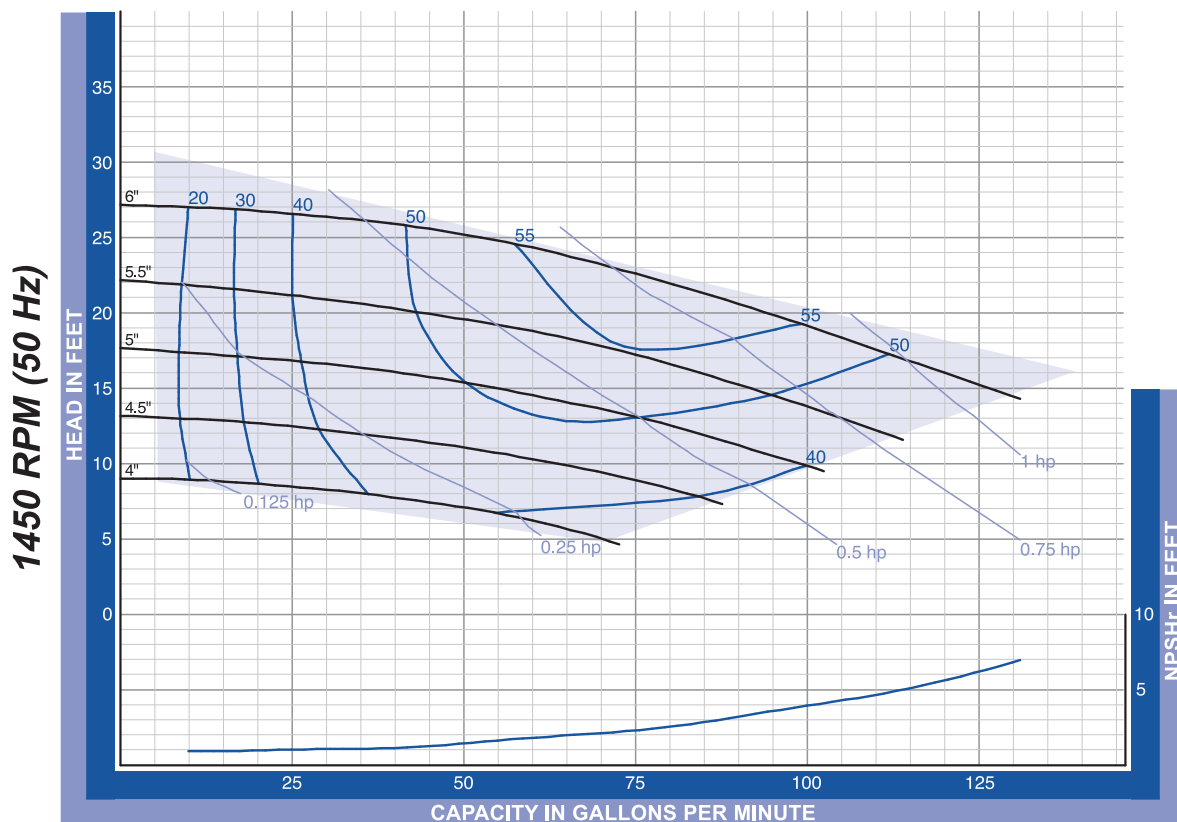
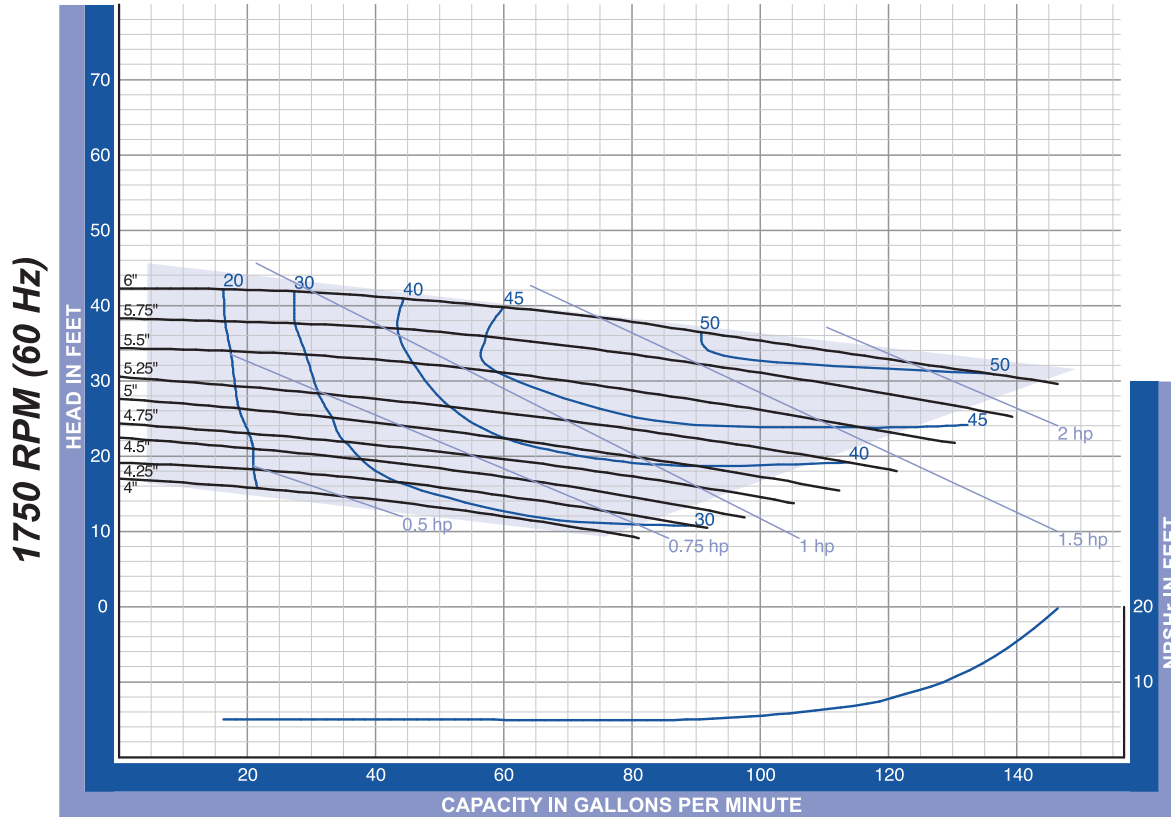
QC - 114 Inlet 2" x Outlet 1 1/2". The curves are based testing water at 70° F and have a tolerance of  $\pm 5\%$  applicable to all of them. For different operation conditions please contact us. The impeller diameter is in inches.





## QC 216 2.0" x 1.5" Standard Inlet

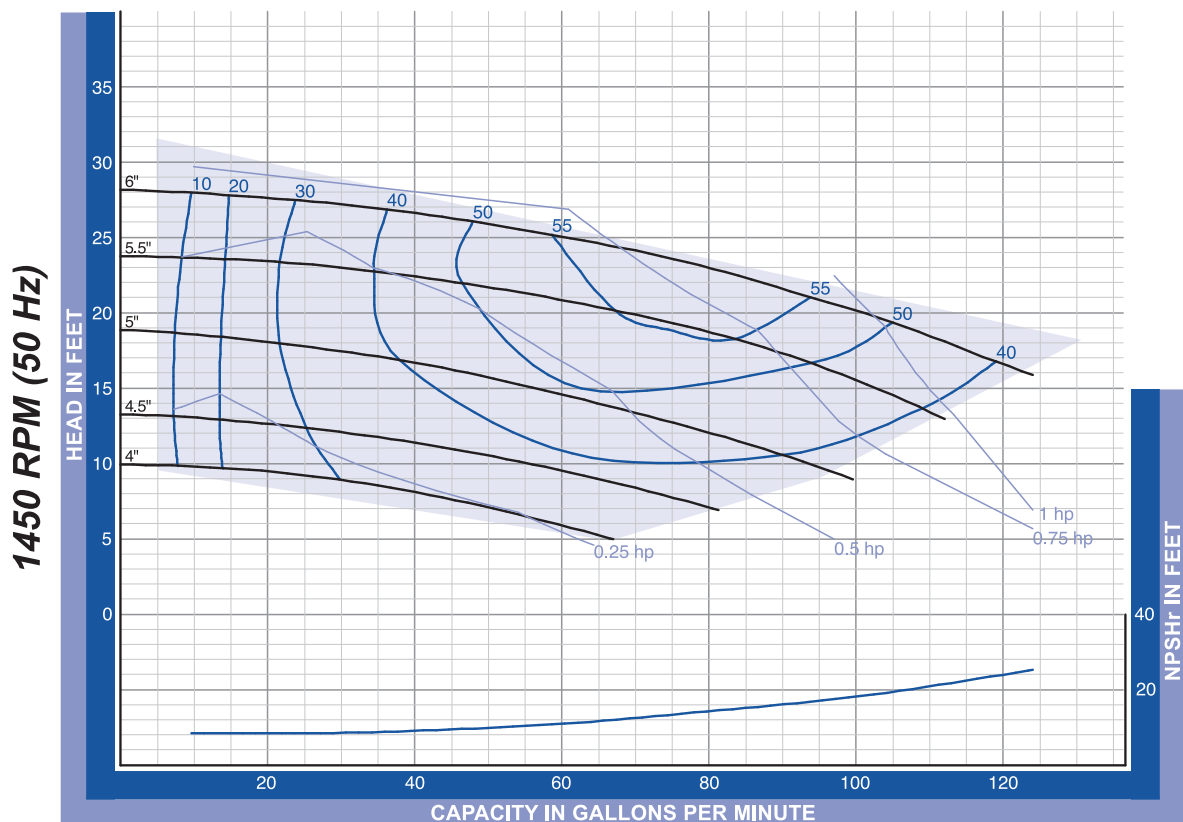
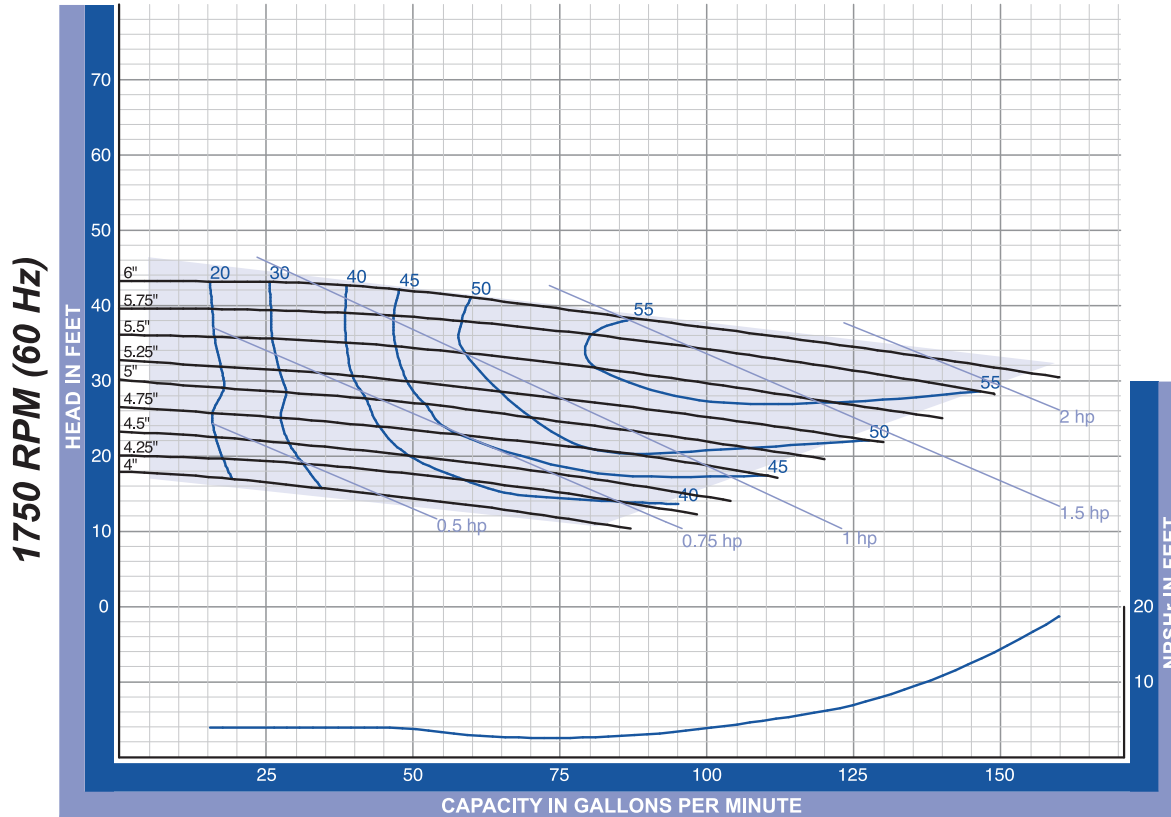
QC - 216 Inlet 2 " x Outlet 1½". The curves are based testing water at 70° F and have a tolerance of ±5% applicable to all of them. For different operation conditions please contact us. The impeller diameter is in inches.





## QC 216 2.5" x 1.5" Enlarged Inlet

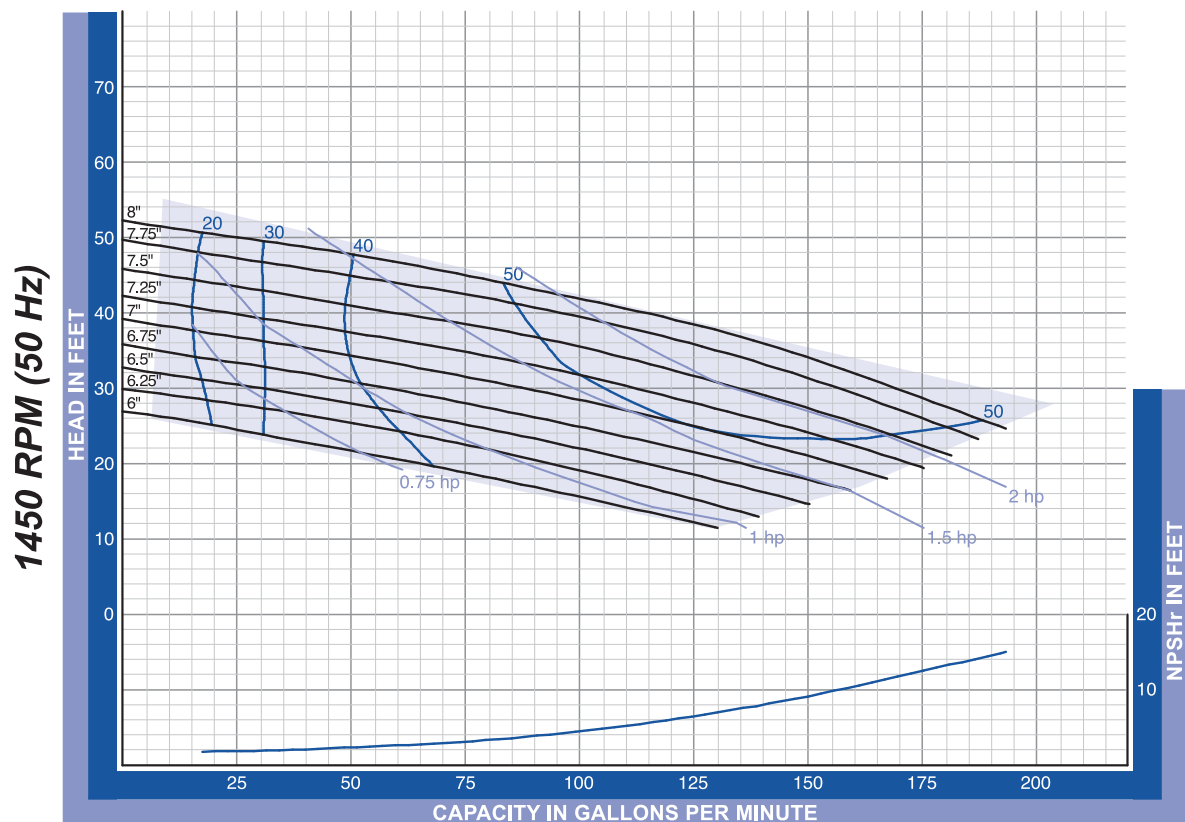
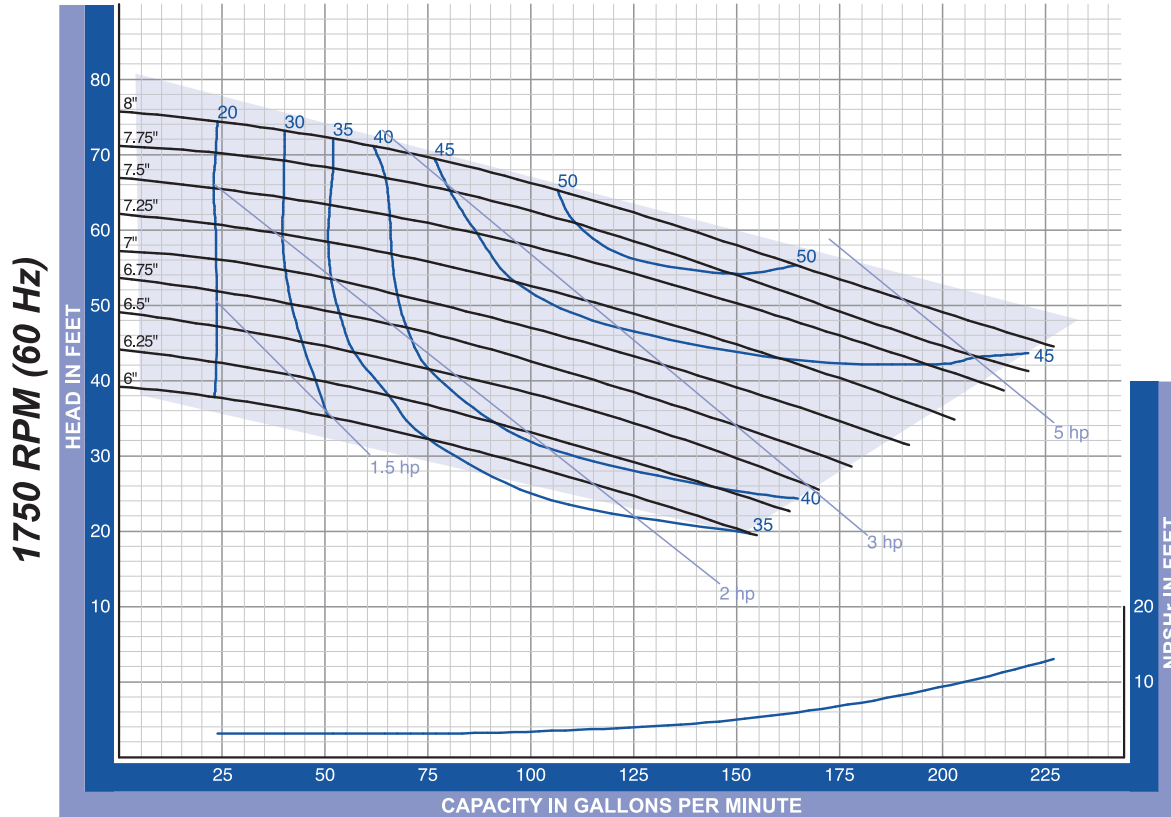
QC - 216 Inlet 2 ½" x Outlet 1½". The curves are based testing water at 70° F and have a tolerance of ±5% applicable to all of them. For different operation conditions please contact us. The impeller diameter is in inches.





## QC 218 2.0" x 1.5" Standard Inlet

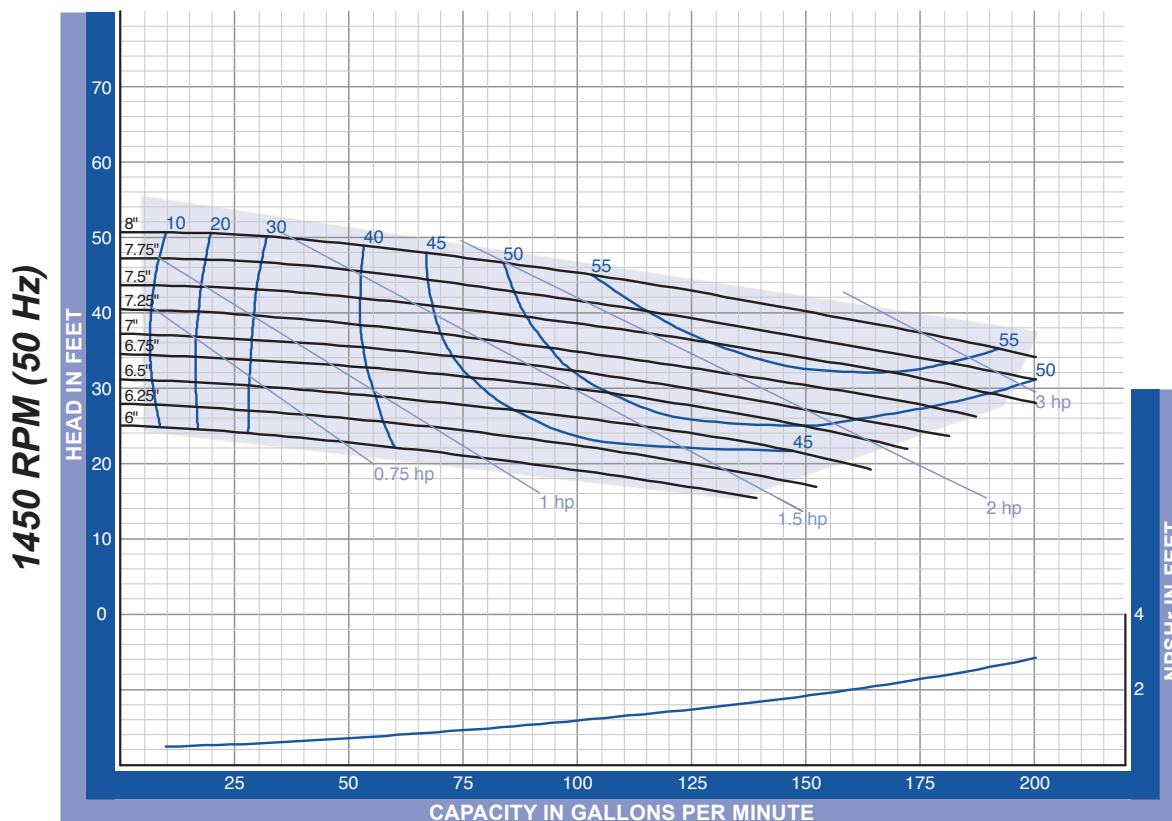
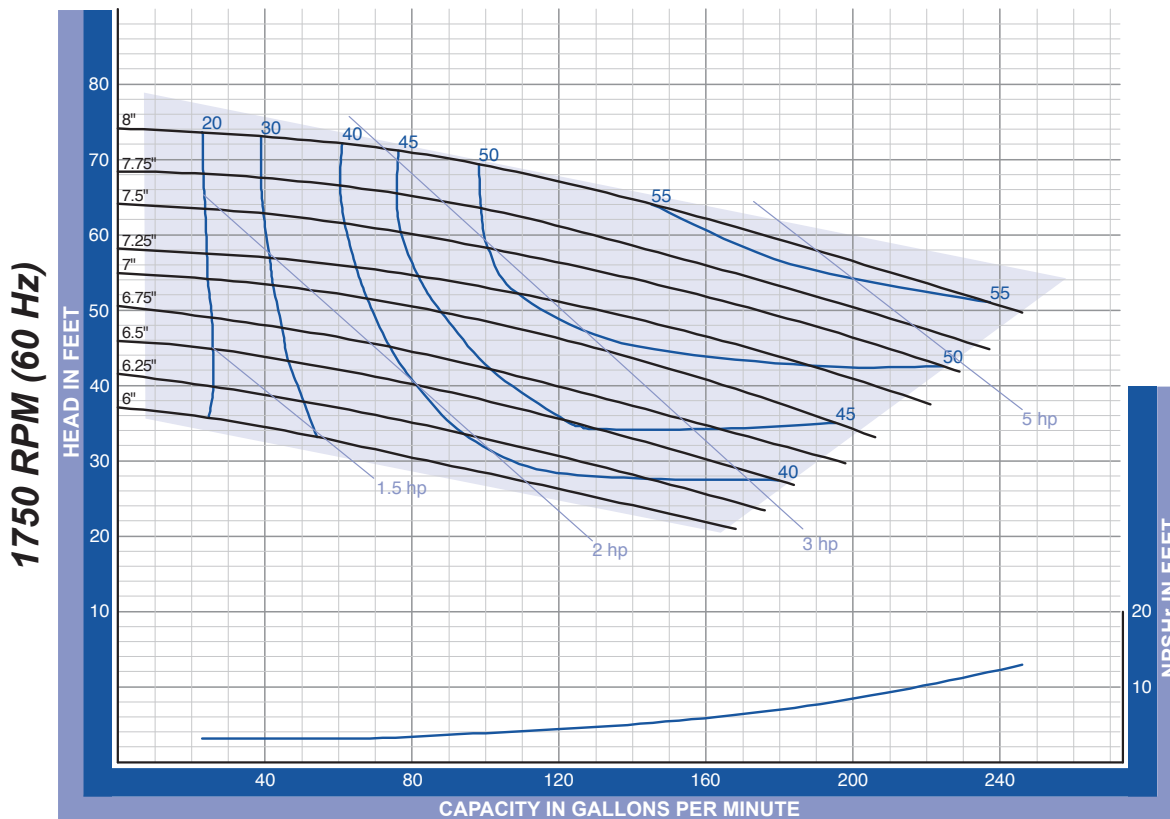
QC - 218 Inlet 2" x Outlet 1 1/2". The curves are based testing water at 70° F and have a tolerance of  $\pm 5\%$  applicable to all of them. For different operation conditions please contact us. The impeller diameter is in inches.





# QC 218 3.0" x 1.5" Enlarged Inlet

QC - 218 Inlet 3" x Outlet 1 1/2". The curves are based testing water at 70° F and have a tolerance of ±5% applicable to all of them. For different operation conditions please contact us. The impeller diameter is in inches.

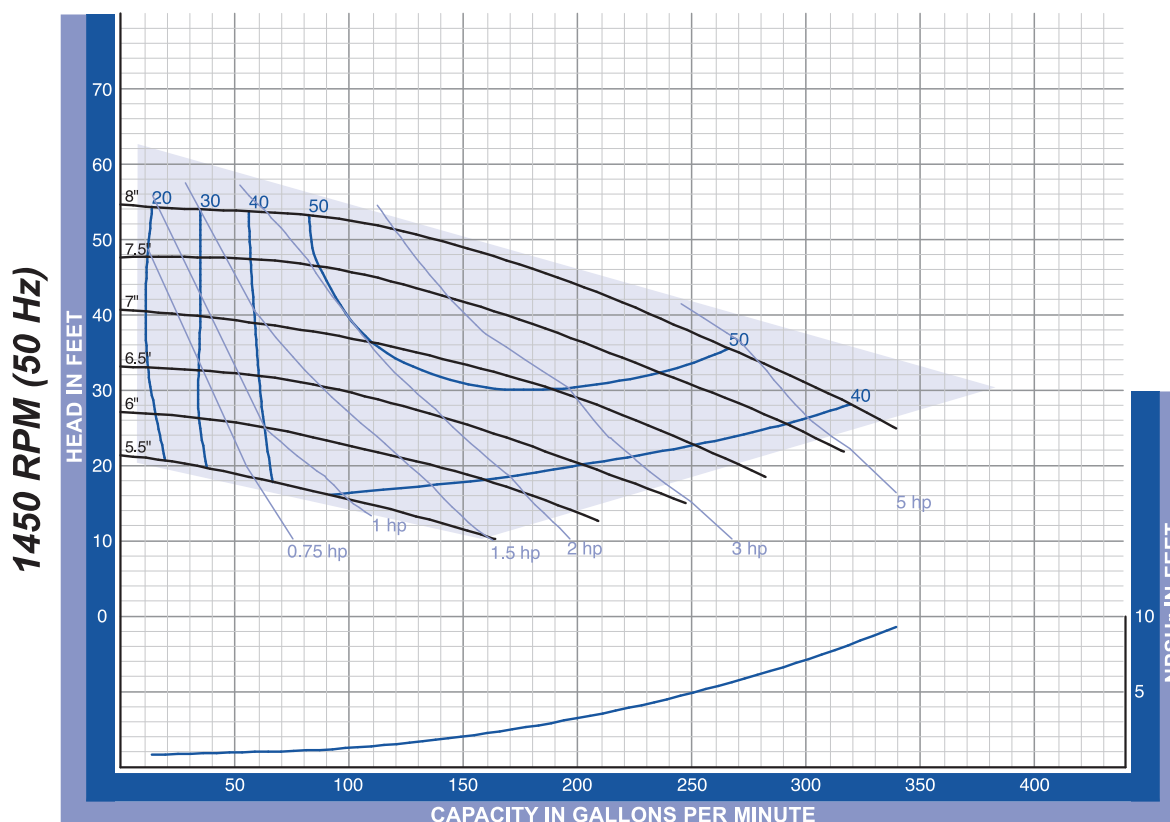
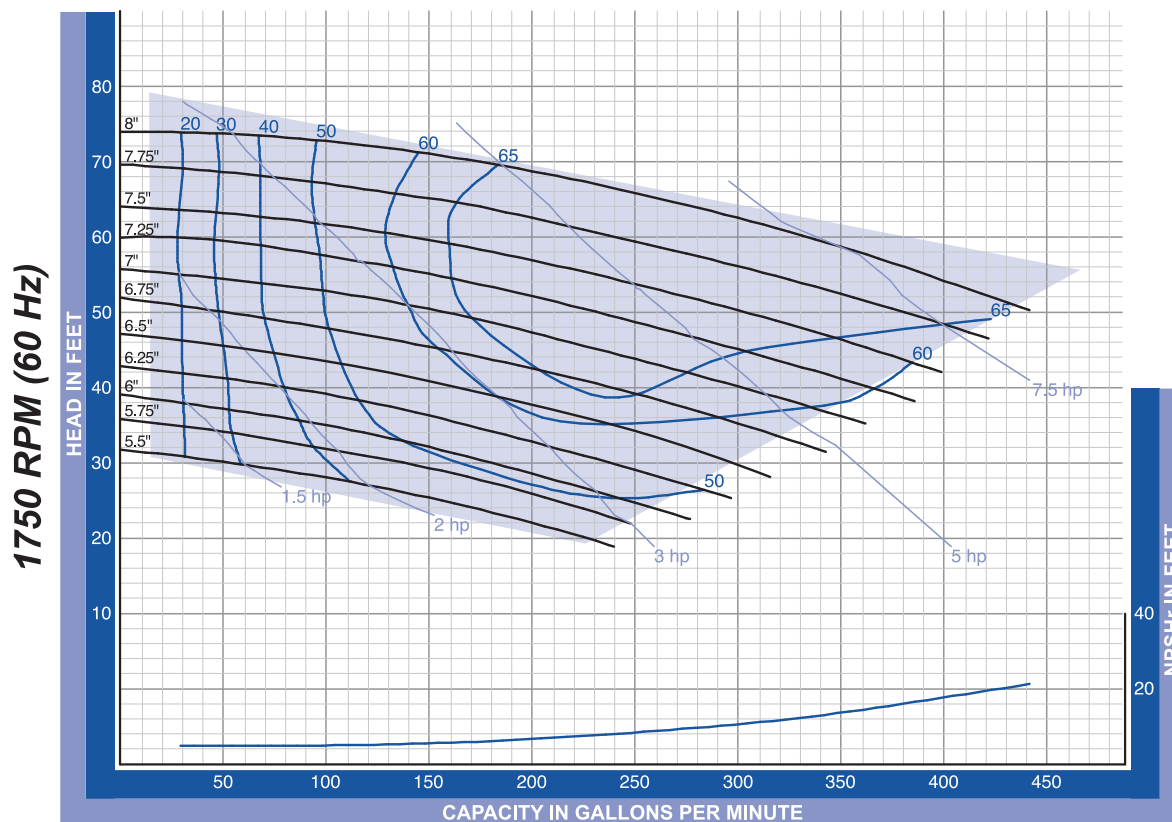






## QC 328 3.0" x 2.0" Standard Inlet

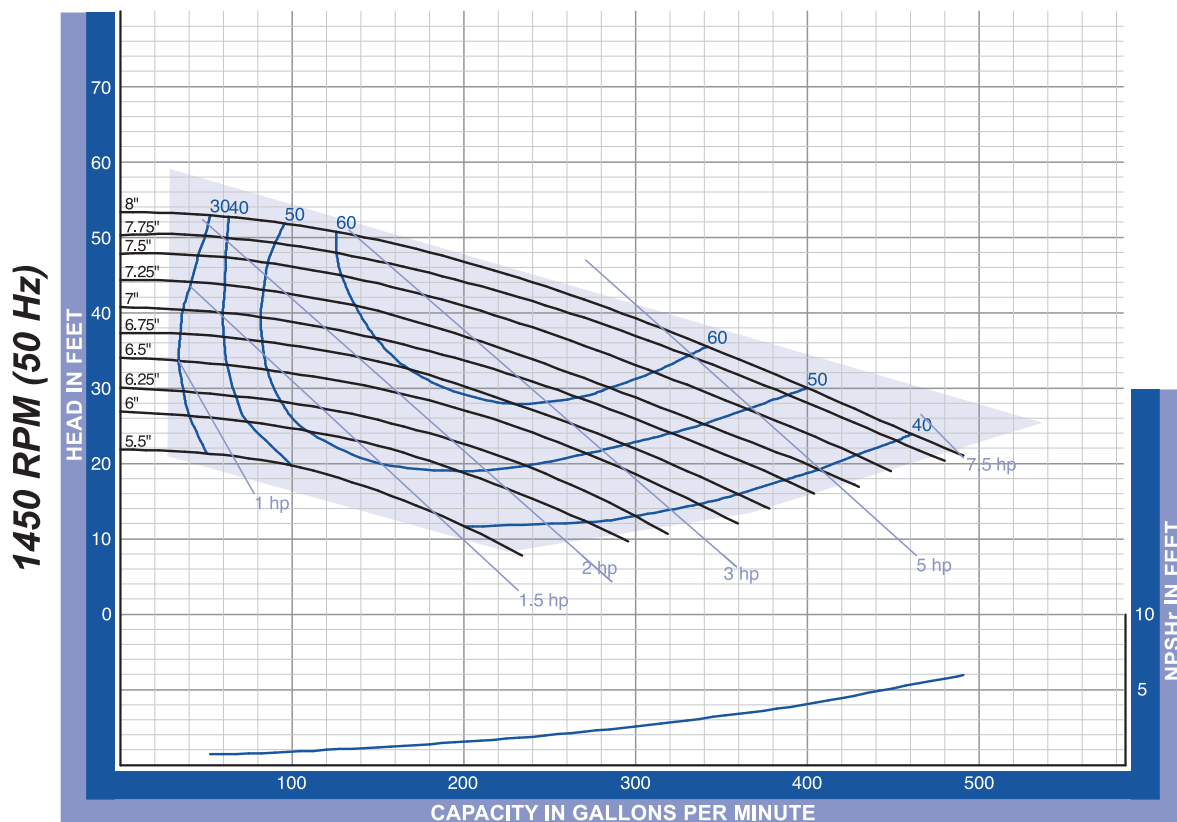
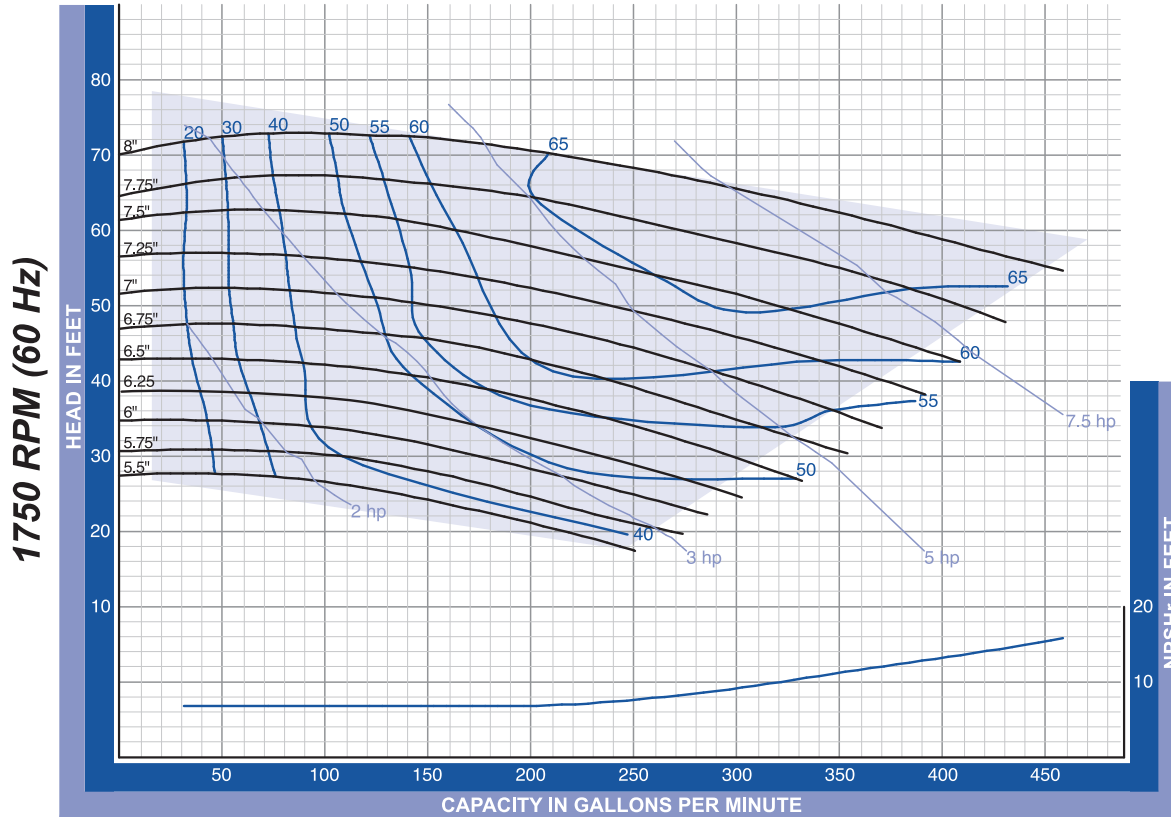
QC - 328 Inlet 3" x Outlet 2". The curves are based testing water at 70° F and have a tolerance of  $\pm 5\%$  applicable to all of them. For different operation conditions please contact us. The impeller diameter is in inches.





## QC 328 4.0" x 2.0" Enlarged Inlet

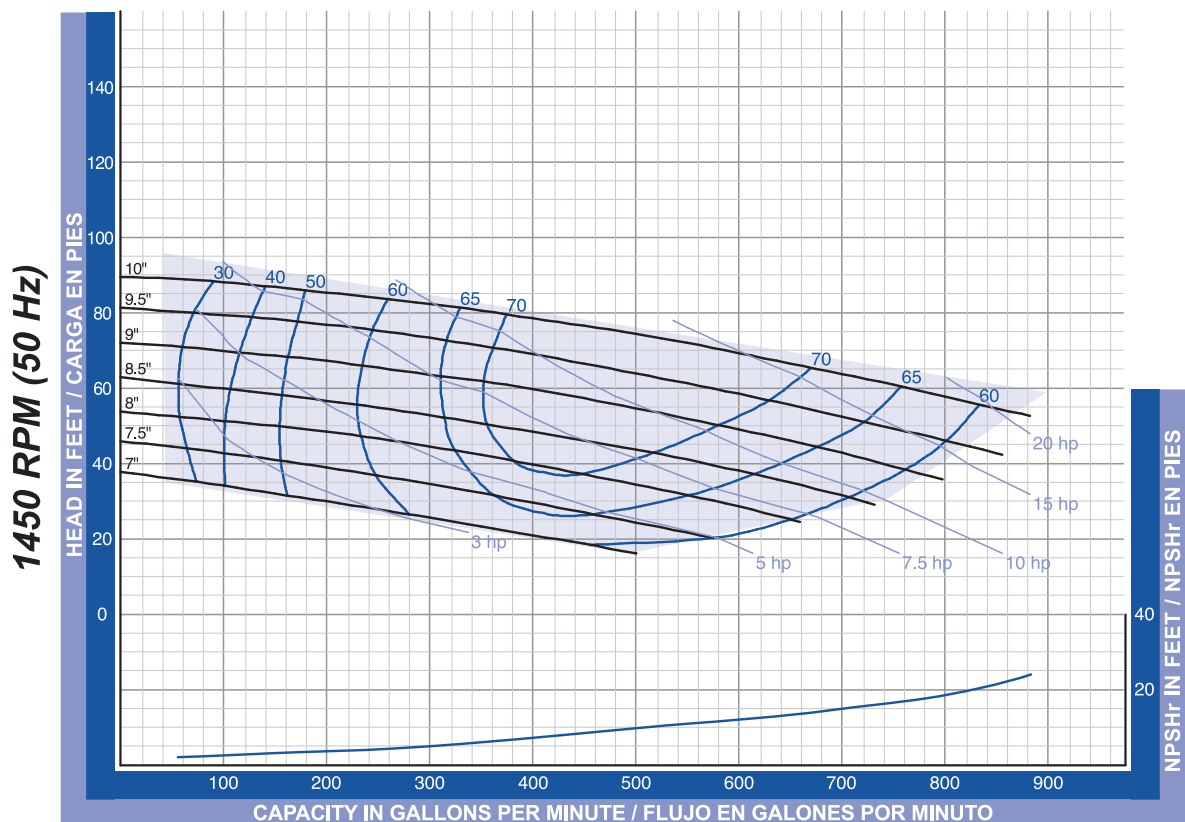
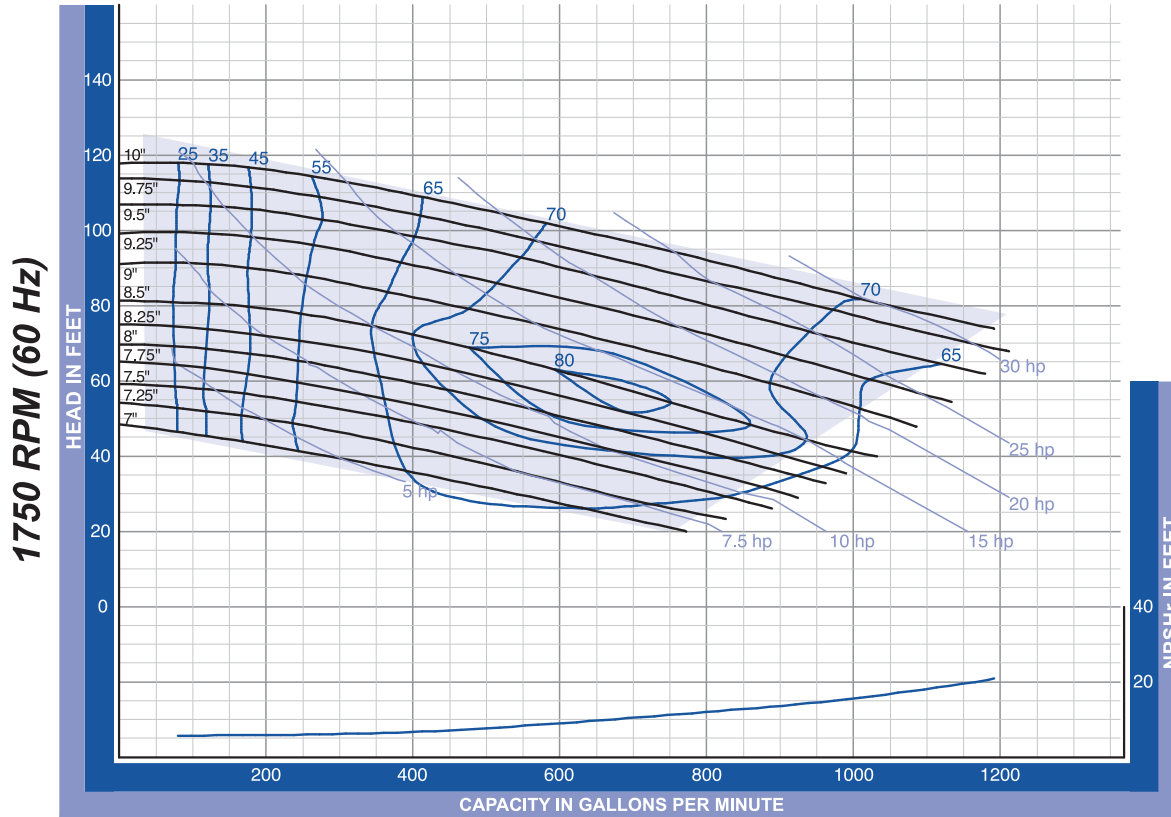
QC - 328 Inlet 4" x Outlet 2". The curves are based testing water at 70° F and have a tolerance of  $\pm 5\%$  applicable to all of them. For different operation conditions please contact us. The impeller diameter is in inches.





# QC 4410 4.0" x 4.0" Standard Inlet

QC - 4410 Inlet 4" x Outlet 4". The curves are based testing water at 70° F and have a tolerance of  $\pm 5\%$  applicable to all of them. For different operation conditions please contact us. The impeller diameter is in inches.





# QC 4410 6.0" x 4.0" Enlarged Inlet

QC - 210 Inlet 6" x Outlet 4". The curves are based testing water at 70° F and have a tolerance of  $\pm 5\%$  applicable to all of them. For different operation conditions please contact us. The impeller diameter is in inches.

