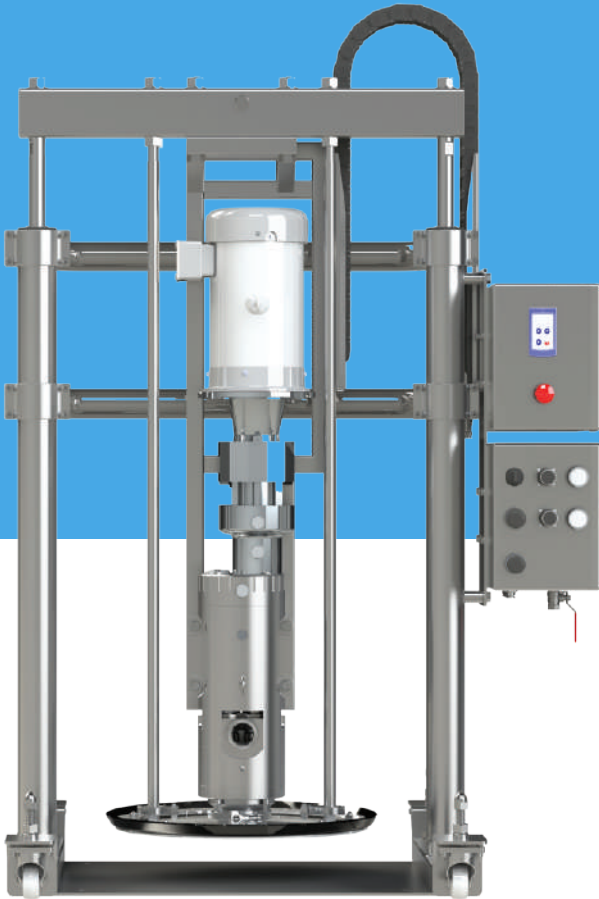




# QDU SERIES

THE FASTEST DRUM UNLOADER WITH THE LESS ENERGY CONSUMPTION



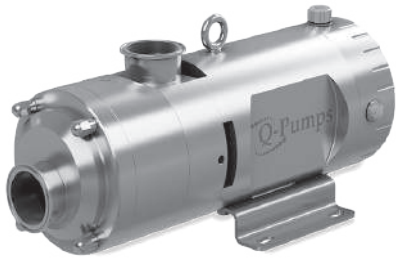
The QDU is a Drum Unloader equipment, fully designed with an integrated QTS Pump linked to an electric motor, which allows savings in energy consumption.



## CHARACTERISTICS

- Energy saving due using efficient electric motors
- Deliver faster unloading
- Accurate metering
- Quieter operation
- Electric drum QTS pump provide a substantial increase in efficiency over less efficient air-operated pumps
- Constant flow
- Handling of products with high viscosities (from 1 to 1,000,000 cP)
- Allows downloads up to 60 GPM depending on the viscosity
- Its hygienic design integrates an EHEDG certificated QTS Pump
- Up to 360 Psi





## QTS SERIES

### TWIN SCREW PUMPS FOR INFINITE APPLICATIONS

The QTS is a twin screw pump, 100% sanitary and ideal as a process pump and CIP, which reduces costs and maintenance times.

## QC SERIES



### EASY ASSEMBLY CENTRIFUGAL PUMPS

The QC + series is ideal for sanitary and non-sanitary applications, perfect for the food, beverage and agrochemical industries.



## QIS SERIES

### INTERNAL SEAL

The QIS is a new sanitary centrifugal pump with an Internal seal, ideal for sanitary and non-sanitary applications, perfect for the food, beverage and pharmaceutical industries.



## MIXERS SERIES

### QIM, QDB, QVM



### YOUR PROCESSES, EASIER

Created perfect solution for applications that require to be homogenized or disintegrated while being pumped. The most versatile mixers in the market.

