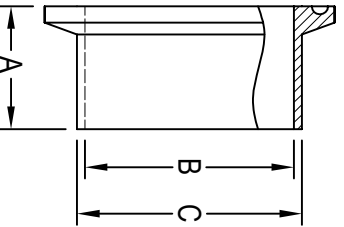


HS-L14AM7 LONG WELD FERRULE



CLAMP SIZE	A	B	C	Wall Thickness	SS-304 Item No.	SS-316L Item No.
1/2"	1.125	.370	.500	0.065	0.50" HS-L14AM7-4-7	0.50" HS-L14AM7-6-7
3/4"	1.125	.620	.750	0.065	0.75" HS-L14AM7-4-7	0.75" HS-L14AM7-6-7
1"	1.125	.870	1.000	0.065	1.00" HS-L14AM7-4-7	1.00" HS-L14AM7-6-7
1 1/2"	1.125	1.370	1.500	0.065	1.50" HS-L14AM7-4-7	1.50" HS-L14AM7-6-7
2"	1.125	1.870	2.000	0.065	2.00" HS-L14AM7-4-7	2.00" HS-L14AM7-6-7
2 1/2"	1.125	2.370	2.500	0.065	2.50" HS-L14AM7-4-7	2.50" HS-L14AM7-6-7
3"	1.125	2.870	3.000	0.065	3.00" HS-L14AM7-4-7	3.00" HS-L14AM7-6-7
4"	1.125	3.834	4.000	0.083	4.00" HS-L14AM7-4-7	4.00" HS-L14AM7-6-7
5"	1.125	4.834	5.000	0.083	5.00" HS-L14AM7-4-7	5.00" HS-L14AM7-6-7
6"	1.500	5.782	6.000	0.109	6.00" HS-L14AM7-4-7	6.00" HS-L14AM7-6-7
8"	1.500	7.782	8.000	0.109	8.00" HS-L14AM7-4-7	8.00" HS-L14AM7-6-7
10"	1.500	9.782	10.000	0.109	10.00" HS-L14AM7-4-7	10.00" HS-L14AM7-6-7
12"	1.500	11.782	12.000	0.109	12.00" HS-L14AM7-4-7	12.00" HS-L14AM7-6-7

All dimensions in inches.