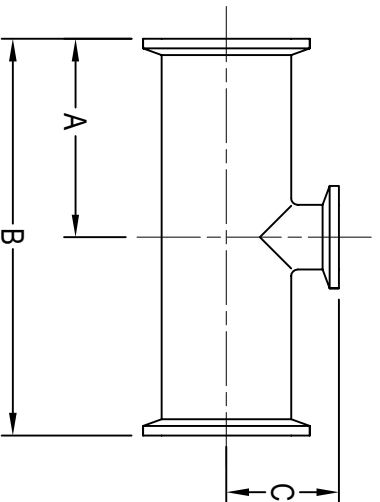


BPE HS-7RMPS SHORT OUTLET REDUCING TEE, CLAMP ENDS



DT-4.1.2-9

CLAMP SIZE	A	B	C	Wall Thickness	BPE SS316L Item No.
3/4" x 1/2"	2.500	5.000	1.000	0.065	0.75" x 0.50" HS-7RMPS-B-7
1" x 1/2"	2.625	5.250	1.125	0.065	1.00" x 0.50" HS-7RMPS-B-7
1" x 3/4"	2.625	5.250	1.125	0.065	1.00" x 0.75" HS-7RMPS-B-7
1 1/2" x 1/2"	2.875	5.750	1.375	0.065	1.50" x 0.50" HS-7RMPS-B-7
1 1/2" x 3/4"	2.875	5.750	1.375	0.065	1.50" x 0.75" HS-7RMPS-B-7
1 1/2" x 1"	2.875	5.750	1.375	0.065	1.50" x 1.00" HS-7RMPS-B-7
2" x 1/2"	3.375	6.750	1.625	0.065	2.00" x 0.50" HS-7RMPS-B-7
2" x 3/4"	3.375	6.750	1.625	0.065	2.00" x 0.75" HS-7RMPS-B-7
2" x 1"	3.375	6.750	1.625	0.065	2.00" x 1.00" HS-7RMPS-B-7
2" x 1 1/2"	3.375	6.750	1.625	0.065	2.00" x 1.50" HS-7RMPS-B-7
2 1/2" x 1/2"	3.625	7.250	1.875	0.065	2.50" x 0.50" HS-7RMPS-B-7
2 1/2" x 3/4"	3.625	7.250	1.875	0.065	2.50" x 0.75" HS-7RMPS-B-7
2 1/2" x 1"	3.625	7.250	1.875	0.065	2.50" x 1.00" HS-7RMPS-B-7
2 1/2" x 1 1/2"	3.625	7.250	1.875	0.065	2.50" x 1.50" HS-7RMPS-B-7
2 1/2" x 2"	3.625	7.250	1.875	0.065	2.50" x 2.00" HS-7RMPS-B-7
3" x 1/2"	3.875	7.750	2.125	0.065	3.00" x 0.50" HS-7RMPS-B-7
3" x 3/4"	3.875	7.750	2.125	0.065	3.00" x 0.75" HS-7RMPS-B-7
3" x 1"	3.875	7.750	2.125	0.065	3.00" x 1.00" HS-7RMPS-B-7
3" x 1 1/2"	3.875	7.750	2.125	0.065	3.00" x 1.50" HS-7RMPS-B-7
3" x 2"	3.875	7.750	2.125	0.065	3.00" x 2.00" HS-7RMPS-B-7
3" x 2 1/2"	3.875	7.750	2.125	0.065	3.00" x 2.50" HS-7RMPS-B-7
4" x 1/2"	4.750	9.500	2.625	0.083 / 0.065	4.00" x 0.50" HS-7RMPS-B-7
4" x 3/4"	4.750	9.500	2.625	0.083 / 0.065	4.00" x 0.75" HS-7RMPS-B-7
4" x 1"	4.750	9.500	2.625	0.083 / 0.065	4.00" x 1.00" HS-7RMPS-B-7
4" x 1 1/2"	4.750	9.500	2.625	0.083 / 0.065	4.00" x 1.50" HS-7RMPS-B-7
4" x 2"	4.750	9.500	2.625	0.083 / 0.065	4.00" x 2.00" HS-7RMPS-B-7
4" x 2 1/2"	4.750	9.500	2.625	0.083 / 0.065	4.00" x 2.50" HS-7RMPS-B-7
4" x 3"	4.750	9.500	2.625	0.083 / 0.065	6.00" x 3.00" HS-7RMPS-B-7

All dimensions in inches.