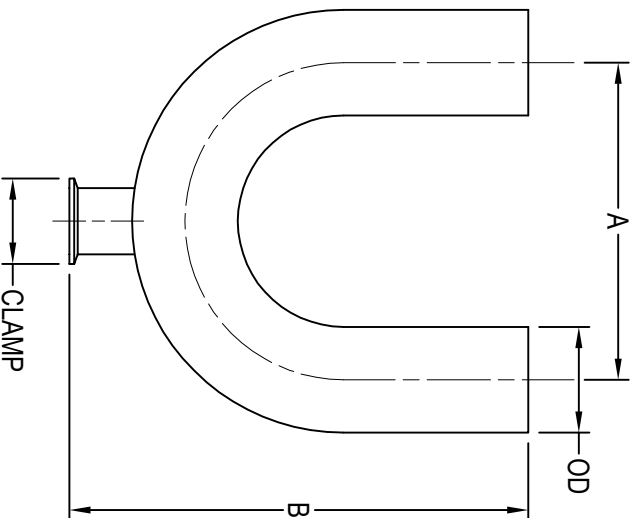


BPE HS-2UBWMM - 180° BOTTOM OUTLET CLAMP USE POINT



SIZES OD x CLAMP	A	B	Wall Thickness	BPE SS316L Item No.
3/4" x 3/4"	4.500	3.898	0.065	0.750" x 0.750" HS-2UBWMM-B-7
1" x 1/2"	3.000	4.020	0.065	1.000" x 0.500" HS-2UBWMM-B-7
1" x 3/4"	3.000	4.020	0.065	1.000" x 0.750" HS-2UBWMM-B-7
1 1/2" x 1/2"	4.500	5.838	0.065	1.500" x 0.500" HS-2UBWMM-B-7
1 1/2" x 3/4"	4.500	5.838	0.065	1.500" x 0.750" HS-2UBWMM-B-7
1 1/2" x 1"	4.500	5.846	0.065	1.500" x 1.000" HS-2UBWMM-B-7
2" x 1/2"	6.000	6.559	0.065	2.000" x 0.500" HS-2UBWMM-B-7
2" x 3/4"	6.000	6.559	0.065	2.000" x 0.750" HS-2UBWMM-B-7
2" x 1"	6.000	6.630	0.065	2.000" x 1.000" HS-2UBWMM-B-7
2" x 1 1/2"	6.000	6.630	0.065	2.000" x 1.500" HS-2UBWMM-B-7
2 1/2" x 1/2"	7.500	7.563	0.065	2.500" x 0.500" HS-2UBWMM-B-7
2 1/2" x 3/4"	7.500	7.563	0.065	2.500" x 0.750" HS-2UBWMM-B-7
2 1/2" x 1"	7.500	7.638	0.065	2.500" x 1.000" HS-2UBWMM-B-7
2 1/2" x 1 1/2"	7.500	7.638	0.065	2.500" x 1.500" HS-2UBWMM-B-7
2 1/2" x 2"	7.500	7.638	0.065	2.500" x 2.000" HS-2UBWMM-B-7
3" x 1/2"	9.000	8.559	0.065	3.000" x 0.500" HS-2UBWMM-B-7
3" x 3/4"	9.000	8.559	0.065	3.000" x 0.750" HS-2UBWMM-B-7
3" x 1"	9.000	8.634	0.065	3.000" x 1.000" HS-2UBWMM-B-7
3" x 1 1/2"	9.000	8.634	0.065	3.000" x 1.500" HS-2UBWMM-B-7
3" x 2"	9.000	8.634	0.065	3.000" x 2.000" HS-2UBWMM-B-7
3" x 2 1/2"	9.000	8.634	0.065	3.000" x 2.500" HS-2UBWMM-B-7
4" x 1/2"	12.000	11.059	0.083 / 0.065	4.000" x 0.500" HS-2UBWMM-B-7
4" x 3/4"	12.000	11.059	0.083 / 0.065	4.000" x 0.750" HS-2UBWMM-B-7
4" x 1"	12.000	11.134	0.083 / 0.065	4.000" x 1.000" HS-2UBWMM-B-7
4" x 1 1/2"	12.000	11.134	0.083 / 0.065	4.000" x 1.500" HS-2UBWMM-B-7
4" x 2"	12.000	11.134	0.083 / 0.065	4.000" x 2.000" HS-2UBWMM-B-7
4" x 2 1/2"	12.000	11.134	0.083 / 0.065	4.000" x 2.500" HS-2UBWMM-B-7
4" x 3"	12.000	11.134	0.083 / 0.065	4.000" x 3.000" HS-2UBWMM-B-7

All dimensions in inches.

