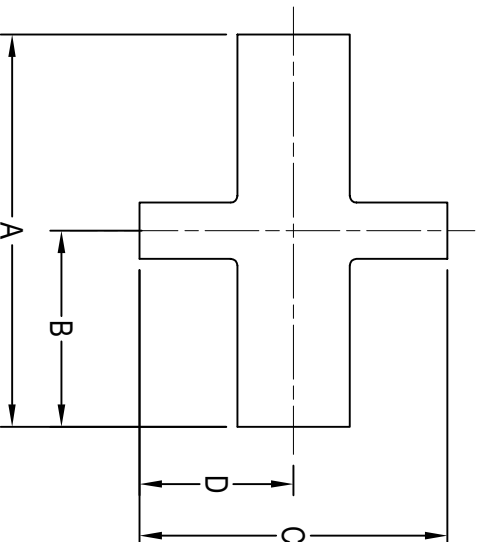


## BPE HS-9RWWWW CROSS REDUCING WELD ENDS



TUBE OD	A	B	C	D	Wall Thickness	BPE SS316L Item No.
3/4" x 1/2"	4.000	2.000	4.000	2.000	0.065	0.75" x 0.50" HS-9RWWWW-B-7
1" x 1/2"	4.250	2.125	4.250	2.125	0.065	1.00" x 0.50" HS-9RWWWW-B-7
1" x 3/4"	4.250	2.125	4.250	2.125	0.065	1.00" x 0.75" HS-9RWWWW-B-7
1 1/2" x 1/2"	4.750	2.375	4.750	2.375	0.065	1.50" x 0.50" HS-9RWWWW-B-7
1 1/2" x 3/4"	4.750	2.375	4.750	2.375	0.065	1.50" x 0.75" HS-9RWWWW-B-7
1 1/2" x 1"	4.750	2.375	4.750	2.375	0.065	1.50" x 1.00" HS-9RWWWW-B-7
2" x 1/2"	5.750	2.875	5.250	2.625	0.065	2.00" x 0.50" HS-9RWWWW-B-7
2" x 3/4"	5.750	2.875	5.250	2.625	0.065	2.00" x 0.75" HS-9RWWWW-B-7
2" x 1"	5.750	2.875	5.250	2.625	0.065	2.00" x 1.00" HS-9RWWWW-B-7
2" x 1 1/2"	5.750	2.875	5.250	2.625	0.065	2.00" x 1.50" HS-9RWWWW-B-7
2 1/2" x 1"	6.250	3.125	5.750	2.875	0.065	2.50" x 1.00" HS-9RWWWW-B-7
2 1/2" x 1 1/2"	6.250	3.125	5.750	2.875	0.065	2.50" x 1.50" HS-9RWWWW-B-7
2 1/2" x 2"	6.250	3.125	5.750	2.875	0.065	2.50" x 2.00" HS-9RWWWW-B-7
3" x 1"	6.750	3.375	6.250	3.125	0.065	3.00" x 1.00" HS-9RWWWW-B-7
3" x 1 1/2"	6.750	3.375	6.250	3.125	0.065	3.00" x 1.50" HS-9RWWWW-B-7
3" x 2"	6.750	3.375	6.250	3.125	0.065	3.00" x 2.00" HS-9RWWWW-B-7
3" x 2 1/2"	6.750	3.375	6.250	3.125	0.065	3.00" x 2.50" HS-9RWWWW-B-7
4" x 1"	8.250	4.125	7.250	3.625	0.083 / 0.065	4.00" x 1.00" HS-9RWWWW-B-7
4" x 1 1/2"	8.250	4.125	7.250	3.625	0.083 / 0.065	4.00" x 1.50" HS-9RWWWW-B-7
4" x 2"	8.250	4.125	7.750	3.875	0.083 / 0.065	4.00" x 2.00" HS-9RWWWW-B-7
4" x 2 1/2"	8.250	4.125	7.750	3.875	0.083 / 0.065	4.00" x 2.50" HS-9RWWWW-B-7
4" x 3"	8.250	4.125	7.750	3.875	0.083 / 0.065	4.00" x 3.00" HS-9RWWWW-B-7

All dimensions in inches.