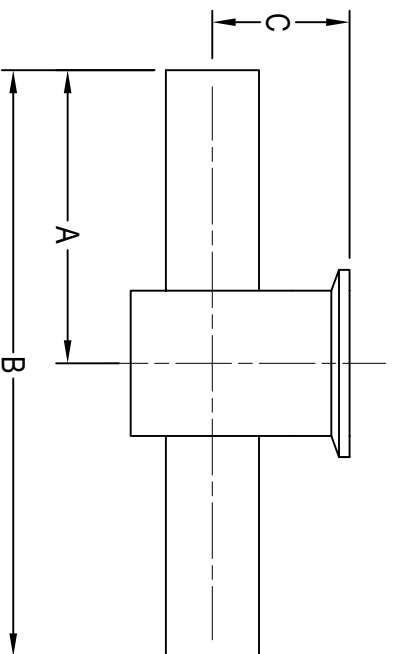


BPE HS-71WWKS INSTRUMENT TEE, WELD ENDS X CLAMP END



DT-4.1.2-10

CLAMP SIZE	A	B	C	Wall Thickness	BPE SS-316L Item No.
1/2" X 1 1/2"	2.500	5.000	0.875	0.065	1/2" X 1 1/2" HS-71WWKS-B-7
3/4" X 1 1/2"	2.500	5.000	1.000	0.065	3/4" X 1 1/2" HS-71WWKS-B-7
1" X 1 1/2"	2.500	5.000	1.125	0.065	1" X 1 1/2" HS-71WWKS-B-7
1/2" X 2"	2.750	5.500	1.000	0.065	1/2" X 2" HS-71WWKS-B-7
3/4" X 2"	2.750	5.500	1.125	0.065	3/4" X 2" HS-71WWKS-B-7
1" X 2"	2.750	5.500	1.250	0.065	1" X 2" HS-71WWKS-B-7
1 1/2" X 2"	2.750	5.500	1.500	0.065	1 1/2" X 2" HS-71WWKS-B-7

All dimensions in inches.