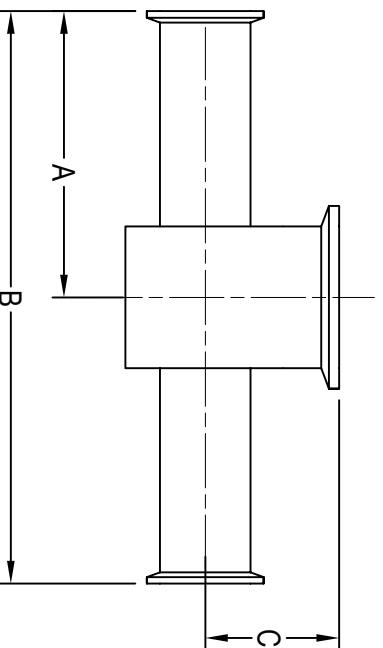


BPE HS-7IMPS INSTRUMENT TEE, CLAMP ENDS



DT-4.1.2-11

CLAMP SIZE	A	B	C	Wall Thickness	BPE SS-316L Item No.
1/2" X 1 1/2"	3.000	6.000	0.875	0.065	1/2" X 1 1/2" HS-7IMPS-B-7
3/4" X 1 1/2"	3.000	6.000	1.000	0.065	3/4" X 1 1/2" HS-7IMPS-B-7
1" X 1 1/2"	3.000	6.000	1.125	0.065	1" X 1 1/2" HS-7IMPS-B-7
1/2" X 2"	3.250	6.500	1.000	0.065	1/2" X 2" HS-7IMPS-B-7
3/4" X 2"	3.250	6.500	1.125	0.065	3/4" X 2" HS-7IMPS-B-7
1" X 2"	3.250	6.500	1.250	0.065	1" X 2" HS-7IMPS-B-7
1 1/2" X 2"	3.250	6.500	1.500	0.065	1 1/2" X 2" HS-7IMPS-B-7

All dimensions in inches.

JANUARY 2025



www.halesoninc.com