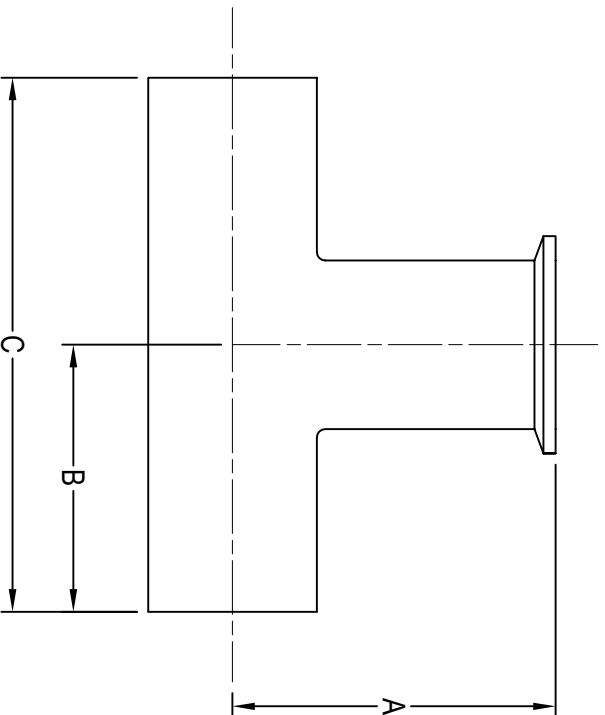


BPE HS-7WWM TEE WELD X WELD X CLAMP



CLAMP SIZE	A	B	C	Wall Thickness	BPE SS-316L Item No.
1/2"	2.250	1.875	3.750	0.065	0.50" HS-7WWM-B-7
3/4"	2.375	2.000	4.000	0.065	0.75" HS-7WWM-B-7
1"	2.625	2.125	4.250	0.065	1.00" HS-7WWM-B-7
1 1/2"	2.875	2.375	4.750	0.065	1.50" HS-7WWM-B-7
2"	3.375	2.875	5.750	0.065	2.00" HS-7WWM-B-7
2 1/2"	3.625	3.125	6.250	0.065	2.50" HS-7WWM-B-7
3"	3.875	3.375	6.750	0.065	3.00" HS-7WWM-B-7
4"	4.750	4.125	8.250	0.083	4.00" HS-7WWM-B-7

All dimensions in inches.

JANUARY 2025



www.halesoninc.com