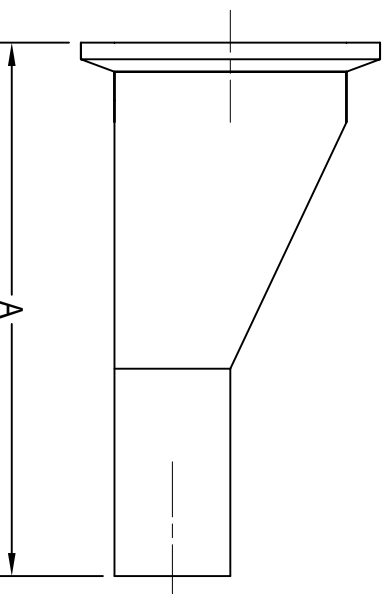


BPE HS-TL32M TC X WELD ECCENTRIC REDUCER (LONG)



CLAMP SIZES	A	Wall Thickness	BPE SS316L Item No.
3/4" x 1/2"	3.000	0.065	0.75" x 0.50" HS-TL32M-B-7
1" x 1/2"	3.500	0.065	1.00" x 0.50" HS-TL32M-B-7
1" x 3/4"	3.000	0.065	1.00" x 0.75" HS-TL32M-B-7
1 1/2" x 1/2"	4.500	0.065	1.50" x 0.50" HS-TL32M-B-7
1 1/2" x 3/4"	4.000	0.065	1.50" x 0.75" HS-TL32M-B-7
1 1/2" x 1"	4.000	0.065	1.50" x 1.00" HS-TL32M-B-7
2" x 1/2"	6.500	0.065	2.00" x 0.50" HS-TL32M-B-7
2" x 3/4"	6.000	0.065	2.00" x 0.75" HS-TL32M-B-7
2" x 1"	6.000	0.065	2.00" x 1.00" HS-TL32M-B-7
2" x 1 1/2"	4.000	0.065	2.00" x 1.50" HS-TL32M-B-7
2 1/2" x 1/2"	9.500	0.065	2.50" x 0.50" HS-TL32M-B-7
2 1/2" x 3/4"	8.000	0.065	2.50" x 0.75" HS-TL32M-B-7
2 1/2" x 1"	8.000	0.065	2.50" x 1.00" HS-TL32M-B-7
2 1/2" x 1 1/2"	6.000	0.065	2.50" x 1.50" HS-TL32M-B-7
2 1/2" x 2"	4.250	0.065	2.50" x 2.00" HS-TL32M-B-7
3" x 1/2"	11.000	0.065	3.00" x 0.50" HS-TL32M-B-7
3" x 3/4"	10.169	0.065	3.00" x 0.75" HS-TL32M-B-7
3" x 1"	10.000	0.065	3.00" x 1.00" HS-TL32M-B-7
3" x 1 1/2"	8.000	0.065	3.00" x 1.50" HS-TL32M-B-7
3" x 2"	6.250	0.065	3.00" x 2.00" HS-TL32M-B-7
3" x 2 1/2"	4.250	0.065	3.00" x 2.50" HS-TL32M-B-7
4" x 1"	14.125	0.083 / 0.065	4.00" x 1.00" HS-TL32M-B-7
4" x 1 1/2"	12.125	0.083 / 0.065	4.00" x 1.50" HS-TL32M-B-7
4" x 2"	10.375	0.083 / 0.065	4.00" x 2.00" HS-TL32M-B-7
4" x 2 1/2"	8.375	0.083 / 0.065	4.00" x 2.50" HS-TL32M-B-7
4" x 3"	6.375	0.083 / 0.065	4.00" x 3.00" HS-TL32M-B-7

All dimensions in inches.