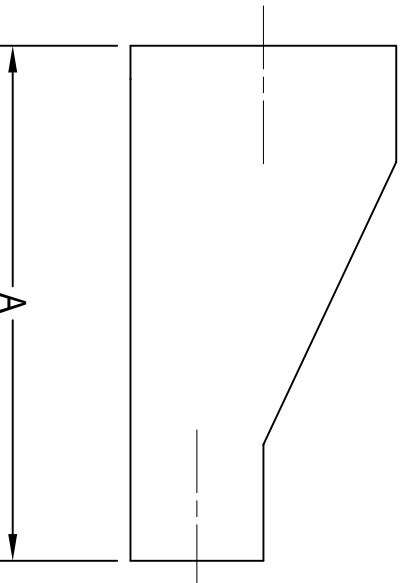


HS-32LT WELD ECCENTRIC REDUCER AWF LONG TANGENTS



CLAMP SIZES	A	Wall Thickness	SS316L Item No.
3/4" X 1/2"	2.125	0.065	0.75" X 0.50" HS-32LT-6-7
1" X 1/2"	2.500	0.065	1.00" X 0.50" HS-32LT-6-7
1" X 3/4"	2.125	0.065	1.00" X 0.75" HS-32LT-6-7
1 1/2" X 3/4"	3.000	0.065	1.50" X 0.75" HS-32LT-6-7
1 1/2" X 1"	2.500	0.065	1.50" X 1.00" HS-32LT-6-7
2" X 1"	3.375	0.065	2.00" X 1.00" HS-32LT-6-7
2" X 1 1/2"	2.500	0.065	2.00" X 1.50" HS-32LT-6-7
2 1/2" X 1 1/2"	3.375	0.065	2.50" X 1.50" HS-32LT-6-7
2 1/2" X 2"	2.500	0.065	2.50" X 2.00" HS-32LT-6-7
3" X 1 1/2"	4.250	0.065	3.00" X 1.50" HS-32LT-6-7
3" X 2"	3.375	0.065	3.00" X 2.00" HS-32LT-6-7
3" X 2 1/2"	2.625	0.065	3.00" X 2.50" HS-32LT-6-7
4" X 2"	5.125	0.083 / 0.065	4.00" X 2.00" HS-32LT-6-7
4" X 2 1/2"	4.250	0.083 / 0.065	4.00" X 2.50" HS-32LT-6-7
4" X 3"	3.875	0.083 / 0.065	4.00" X 3.00" HS-32LT-6-7
6" X 3"	7.250	0.109 / 0.065	6.00" X 3.00" HS-32LT-6-7
6" X 4"	5.625	0.109 / 0.083	6.00" X 4.00" HS-32LT-6-7

All dimensions in inches.